

VOR/DME ALO 112.2 Chan 59	APP CRS 133°	Rwy Idg TDZE Apt Elev	8399 873 873
---	------------------------	-----------------------------	---

VOR RWY 12

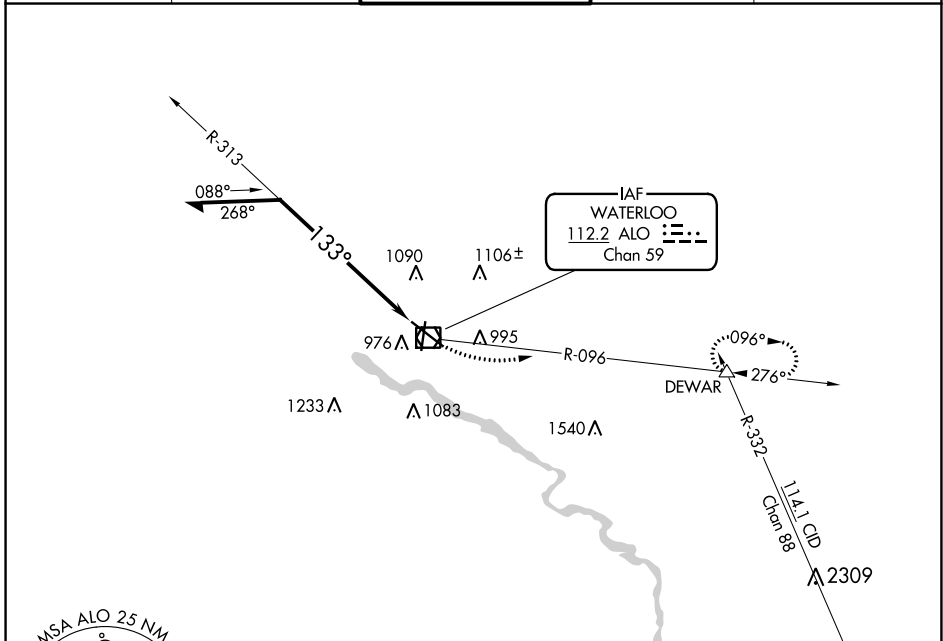
WATERLOO RGNL (ALO)

⚠ For inop ALS, increase S-12 Cat C/D visibility to 1¼ SM.

MALSR 

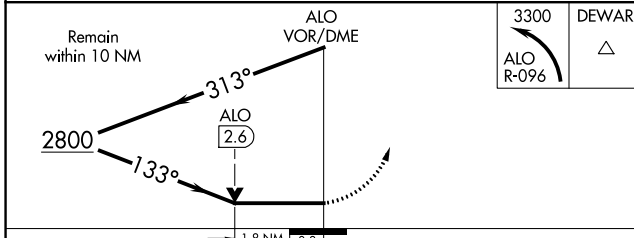
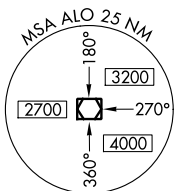
MISSED APPROACH: Climbing left turn to 3300 on ALO VOR/DME R-096 to DEWAR INT and hold.

ATIS 120.65	WATERLOO APP CON * 118.9 251.15	WATERLOO TOWER * 125.075 (CTAF) 257.8	GND CON 121.9 269.1	UNICOM 122.95
-----------------------	---	---	-------------------------------	-------------------------

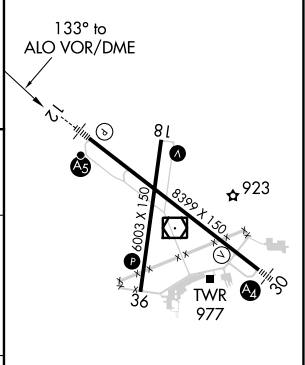


NC-3, 26 DEC 2024 to 23 JAN 2025

NC-3, 26 DEC 2024 to 23 JAN 2025



ELEV 873	D TDZE 873
----------	-------------------



CATEGORY	A	B	C	D
S-12	1500/24	627 (700-½)	1500-1¾	627 (700-1¾)
C CIRCLING	1500-1	627 (700-1)	1500-1¾	1600-2¼ 627 (700-1¾) 727 (800-2¼)

HIRL Rwy 12-30 **Ⓡ**
MIRL Rwy 18-36 **Ⓡ**
REIL Rwy 18 and 36