

EASTOVER, SOUTH CAROLINA

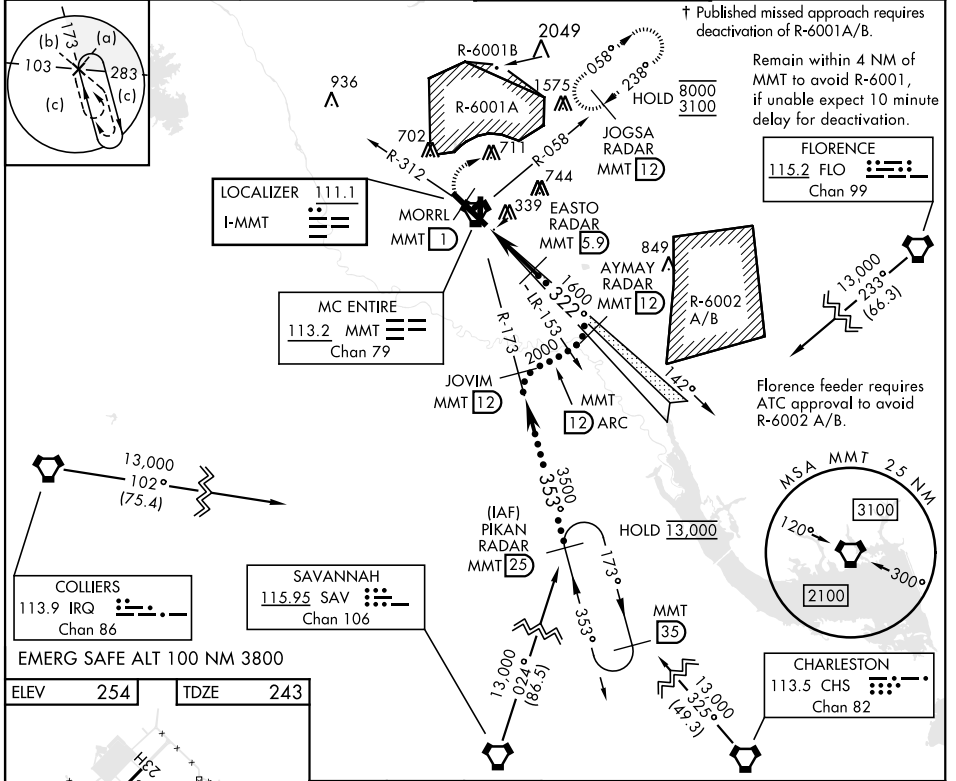
HI-ILS or LOC/DME RWY 32

LOC I-MMT 111.1	APCH CRS 322°	Rwy ldg TDZE Arprt Elev 9012 243 254	[USAF]	MC ENTIRE JNGB (KMMT)
---------------------------	-------------------------	--	--------	-----------------------

▼ *When ALS inop, increase CAT CDE RVR to 40, vis to 3/4 mile.
 **When ALS inop, increase CAT C RVR to 55, vis to 1 mile.

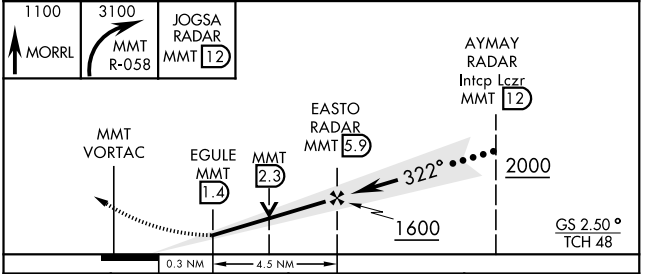
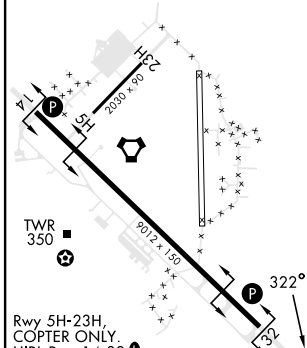
ALSF-1
 † MISSED APPROACH: Climb to 1100 direct MORRL/1 DME then climbing right turn to 3100 intercept MMT R-058 direct JOGSA/12 DME and hold.

ATIS ★ 327.05	SHAW APP CON 125.4 318.1	TOWER★ 132.4 (CTAF) 0 253.5	GND CON 127.625 226.675
-------------------------	------------------------------------	---------------------------------------	-----------------------------------



EMERG SAFE ALT 100 NM 3800

ELEV	254	TDZE	243
------	-----	------	-----



FAF to MAP 4.5 NM					
Knots	120	140	160	180	200
Min:Sec	2:15	1:56	1:41	1:30	1:21
CIRCLING	880-1 3/4 626 (700-1 3/4)		940-2 1/4 686 (700-2 1/4)		1020-2 3/4 766 (800-2 3/4)
CATEGORY	C		D		E
S-ILS 32 *	443/24		200 (200-1/2)		
S-LOC 32 **	620/35		377 (400-5/8)		

EASTOVER, SOUTH CAROLINA 33° 55' N-80° 48' W MC ENTIRE JNGB (KMMT)
 Amdt 4 25MAY17

HI-ILS or LOC/DME RWY 32

SE-2, 26 DEC 2024 to 23 JAN 2025

SE-2, 26 DEC 2024 to 23 JAN 2025