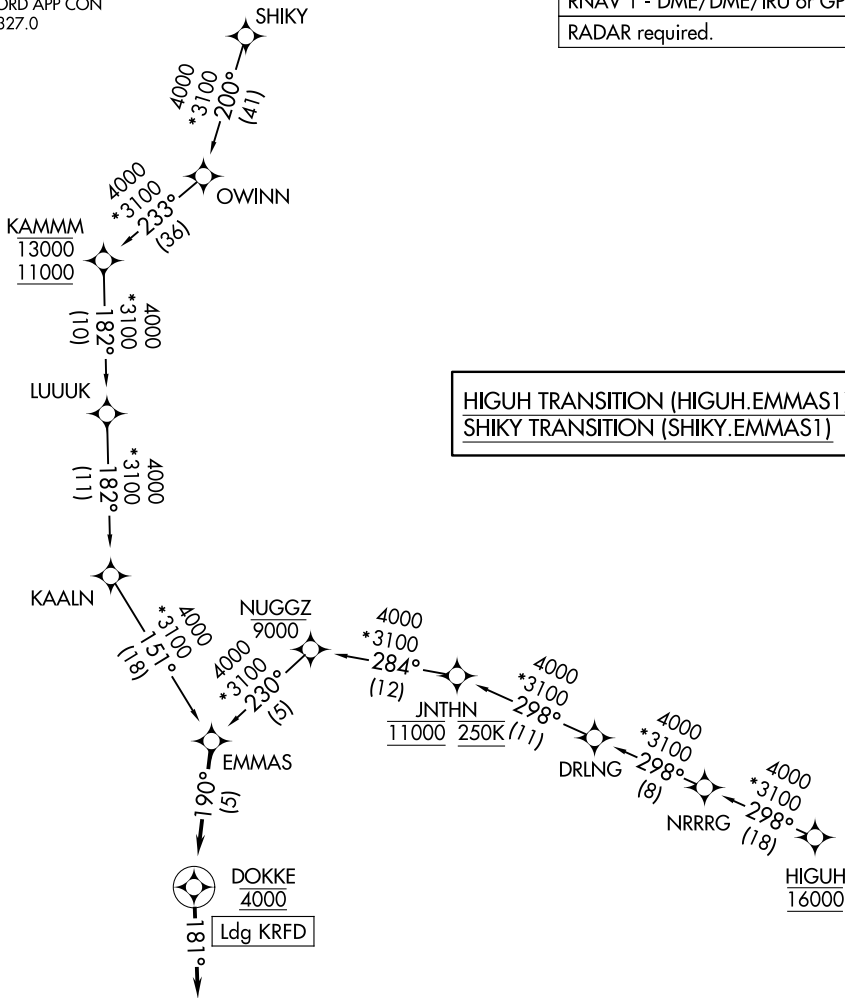


# EMMAS ONE ARRIVAL (RNAV)

ROCKFORD APP CON  
121.0 327.0  
ATIS  
127.6

RNAV 1 - DME/DME/IRU or GPS.

RADAR required.



HIGUH TRANSITION (HIGUH.EMMAS1)  
SHIKY TRANSITION (SHIKY.EMMAS1)

EC-3, 26 DEC 2024 to 23 JAN 2025

EC-3, 26 DEC 2024 to 23 JAN 2025

NOTE: Chart not to scale.

## ARRIVAL ROUTE DESCRIPTION

From EMMAS on track 190° to cross DOKKE at 4000, then on track 181°. Expect RADAR vectors to final approach course.

# EMMAS ONE ARRIVAL (RNAV)

(EMMAS.EMMAS1) 25JAN24