

LOC/DME I-UDY <b>109.55</b> Chan <b>32 (Y)</b>	APP CRS <b>068°</b>	Rwy Idg <b>1000Z</b> TDZE <b>742</b> Apt Elev <b>742</b>
--	------------------------	--

# ILS or LOC RWY 7

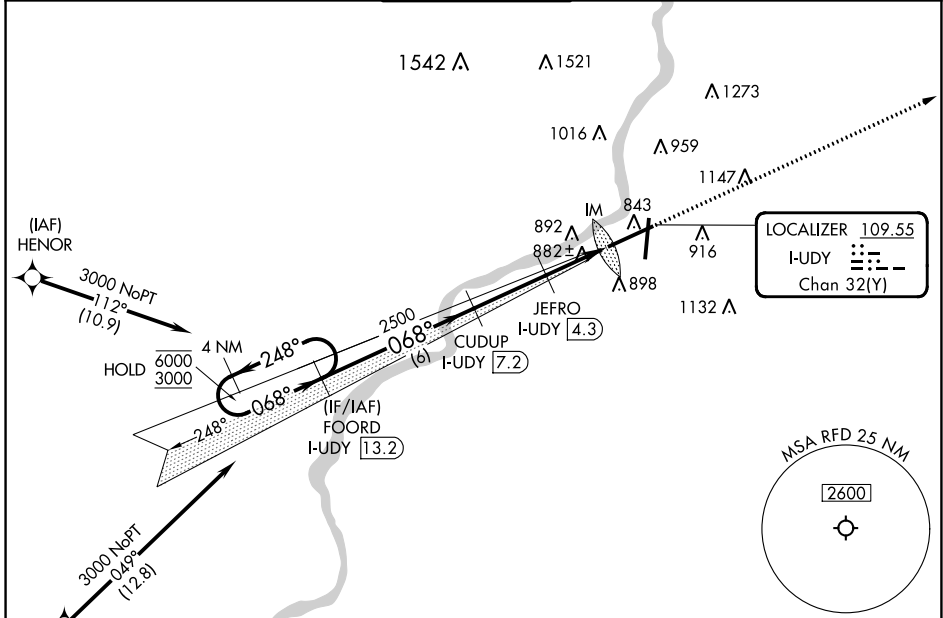
CHICAGO/ROCKFORD INTL (RFD)

DME required for LOC only.  
RNP APCH - GPS. From HENOR or SOSSO.  
RADAR required.

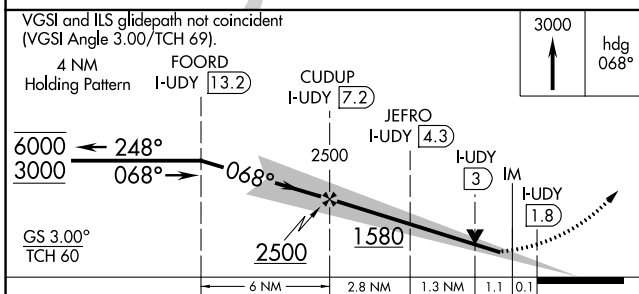
ALS-F-2

MISSED APPROACH: Climb to 3000 on heading 068°. Expect RADAR vectors. (RADAR required).

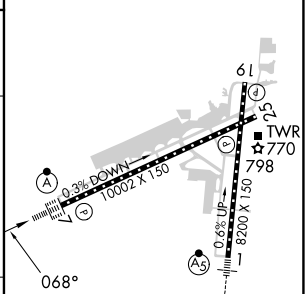
ATIS <b>127.6</b>	ROCKFORD APP CON <b>121.0 327.0</b>	ROCKFORD TOWER <b>118.1 290.375</b>	GND CON <b>121.9 290.375</b>	CLNC DEL <b>119.25</b>
----------------------	--	--	---------------------------------	---------------------------



VGSI and ILS glidepath not coincident (VGSI Angle 3.00/TCH 69).  
4 NM Holding Pattern I-UDY [13.2] CUDUP I-UDY [7.2] JEFRO I-UDY [4.3] IM I-UDY [1.8]



ELEV 742	TDZE 742
----------	----------



CATEGORY	A	B	C	D
S-ILS 7	942/18		200 (200-½)	
S-LOC 7	1200/24	458 (500-½)	1200/45	458 (500-¾)
CIRCLING	1220-1 478 (500-1)	1280-1 538 (600-1)	1320-1½ 578 (600-1½)	1460-2¼ 718 (800-2¼)

REIL Rwy 19 and 25  
HIRL Rwy 1-19 and 7-25  
TDZ/CL Rwy 1 and 7

FAF to MAP 5.3 NM

Knots	60	90	120	150	180
Min:Sec	5:18	3:32	2:39	2:07	1:46

EC-3, 26 DEC 2024 to 23 JAN 2025

EC-3, 26 DEC 2024 to 23 JAN 2025