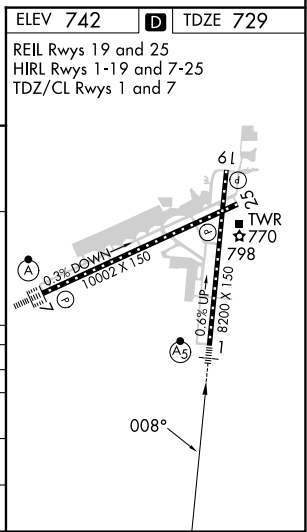
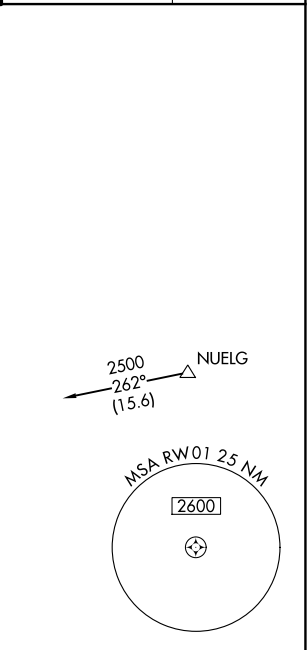
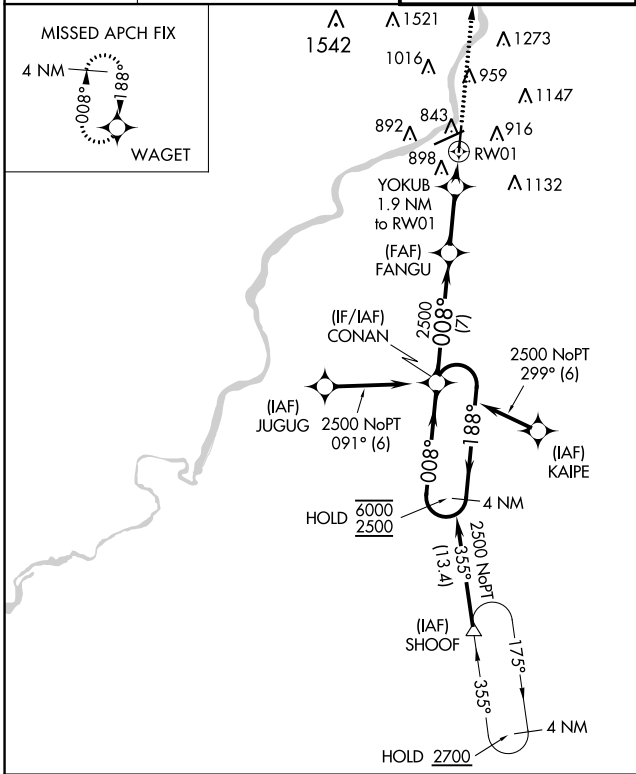


WAAS CH 42720 W01A	APP CRS 008°	Rwy Idg 8199 TDZE 729 Apt Elev 742
--	------------------------	--

RNAV (GPS) RWY 1

CHICAGO/ROCKFORD INTL (RFD)

RNP APCH - GPS.		ROCKFORD TOWER 118.1 290.375		GND CON 121.9 290.375	CLNC DEL 119.25
For uncompensated Baro-VNAV systems, procedure NA below -16°C or above 54°C. For inop ALS, increase LNAV Cats C and D visibility to RVR 6000. *RVR 1800 authorized with use of FD or AP or HUD to DA.				MALSR	MISSED APPROACH: Climb to 2500 direct WAGET and hold.



4 NM Holding Pattern		CONAN	FANGU	YOKUB	WAGET
6000	←188°	008°	2500	1.1 NM to RW01	2500
2500	008°	2500	1340	0.8	1.1
GP 3.00°					
TCH 50					
		7 NM	3.6 NM	0.8	1.1
CATEGORY	A	B	C	D	
LPV DA*	929/24		200 (200-½)		
LNAV/VNAV DA	1200/60		471 (500-1¼)		
LNAV MDA	1120/24	391 (400-½)	1120/35	391 (400-¾)	
CIRCLING	1220-1 478 (500-1)	1280-1 538 (600-1)	1320-1½ 578 (600-1½)	1460-2¼ 718 (800-2¼)	

EC-3, 26 DEC 2024 to 23 JAN 2025

EC-3, 26 DEC 2024 to 23 JAN 2025