

WAAS CH 70345 W15A	APP CRS 148°	Rwy ldg TDZE Apt Elev	5498 1048 1051
--	------------------------	-----------------------------	---

RNAV (GPS) RWY 15

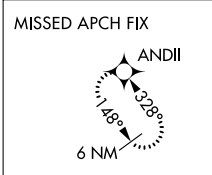
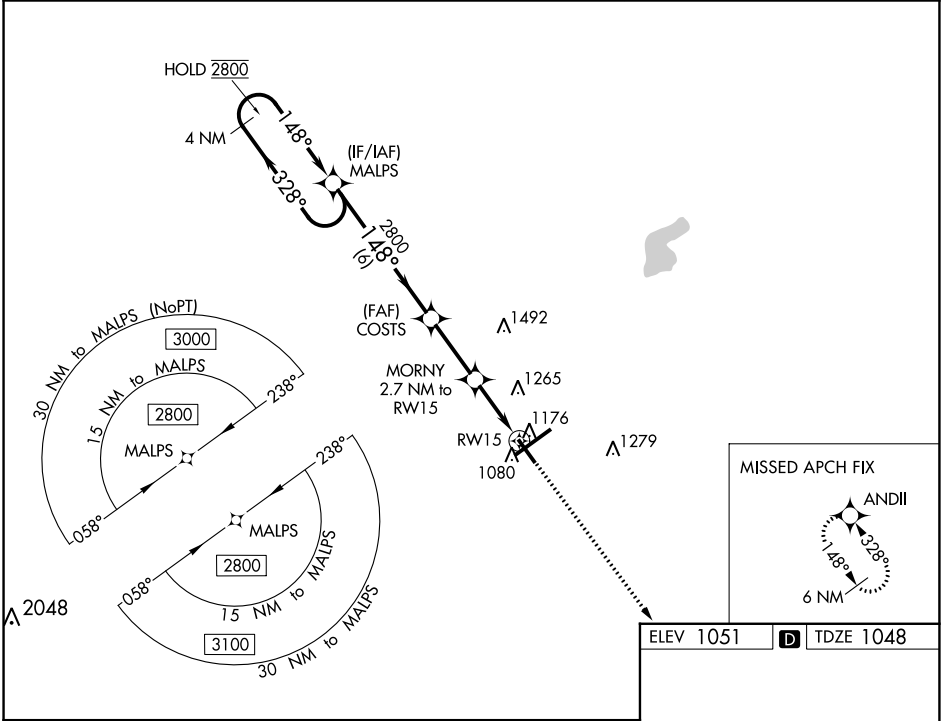
SPRINGFIELD/BECKLEY MUNI (SGH)

RNP APCH - GPS.

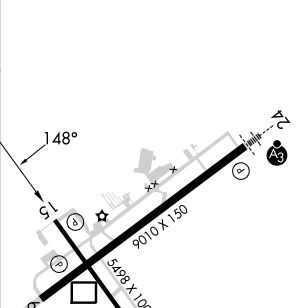
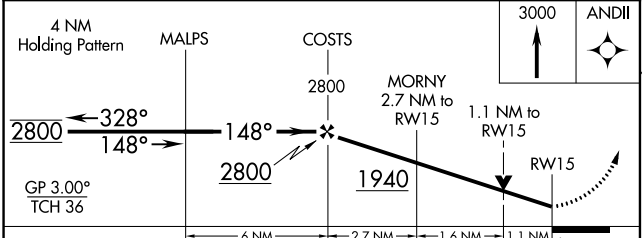
▼ Rwy 15 helicopter visibility reduction below $\frac{3}{4}$ SM NA.
 ▲ For uncompensated Baro-VNAV systems, LNAV/VNAV NA below -17°C or above 54°C.

MISSED APPROACH: Climb to 3000 direct ANDII and hold.

AWOS-3PT 134.975	COLUMBUS APP CON 118.85 269.275	UNICOM 122.95 (CTAF) ①
----------------------------	---	----------------------------------



ELEV 1051	TDZE 1048
-----------	-----------



CATEGORY	A	B	C	D
LPV DA		1298- $\frac{3}{4}$	250 (300- $\frac{3}{4}$)	
LNAV/VNAV DA		1337- $\frac{7}{8}$	289 (300- $\frac{7}{8}$)	
LNAV MDA	1440-1	392 (400-1)	1440-1 $\frac{1}{8}$	392 (400-1 $\frac{1}{8}$)
CIRCLING	1480-1 429 (500-1)	1580-1 529 (600-1)	1580-1 $\frac{1}{2}$ 529 (600-1 $\frac{1}{2}$)	1620-2 569 (600-2)

HIRL Rwy 6-24 ①
 MRL Rwy 15-33 ①
 REIL Rws 6, 15 and 33 ①

EC-2, 26 DEC 2024 to 23 JAN 2025

EC-2, 26 DEC 2024 to 23 JAN 2025