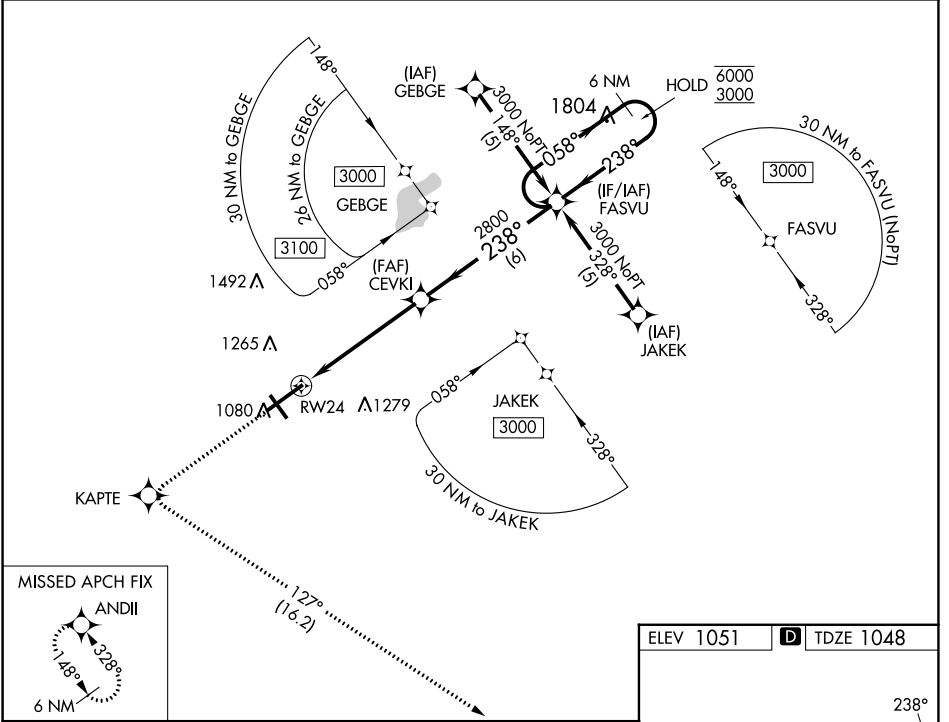


WAAS CH <b>97615</b> <b>W24A</b>	APP CRS <b>238°</b>	Rwy Idg TDZE Apt Elev	<b>9009</b> <b>1048</b> <b>1051</b>
--	------------------------	-----------------------------	---

# RNAV (GPS) RWY 24

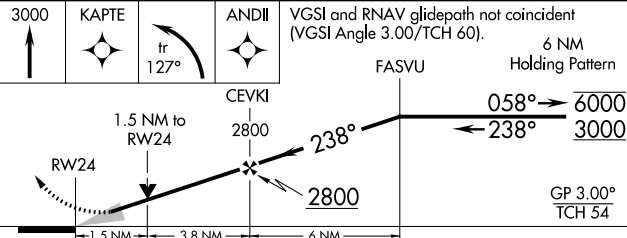
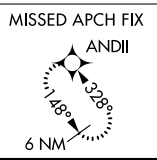
SPRINGFIELD/BECKLEY MUNI (SGH)

RNP APCH - GPS.		SSALR	MISSED APPROACH: Climb to 3000 direct KAPTE and left turn on track 127° to ANDII and hold.
<p>▼ For uncompensated Baro-VNAV systems, LNAV/VNAV NA below -17°C or above 54°C. ▲ For inop ALS, increase LNAV/VNAV all Cats visibility to 1 SM.</p>			
AWOS-3PT <b>134.975</b>	COLUMBUS APP CON <b>118.85 269.275</b>	UNICOM <b>122.95 (CTAF) 1</b>	



EC-2, 26 DEC 2024 to 23 JAN 2025

EC-2, 26 DEC 2024 to 23 JAN 2025



ELEV 1051	<b>D</b> TDZE 1048
-----------	--------------------

CATEGORY	A	B	C	D
LPV DA		1248-1/2	200 (200-1/2)	
LNAV/VNAV DA		1398-5/8	350 (400-5/8)	
LNAV MDA	1580-1/2	532 (600-1/2)	1580-1	532 (600-1)
<b>C</b> CIRCLING	1580-1	529 (600-1)	1580-1 1/2 529 (600-1 1/2)	1620-2 569 (600-2)

HIRL Rwy 6-24 1  
MIRL Rwy 15-33 1  
REIL Rws 6, 15 and 33 1