

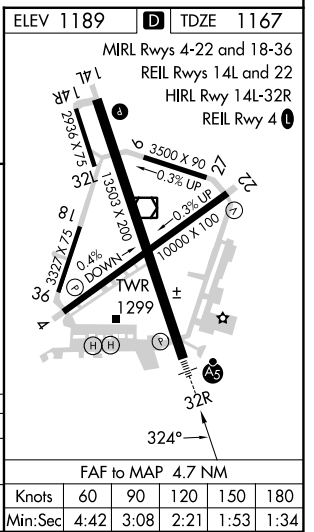
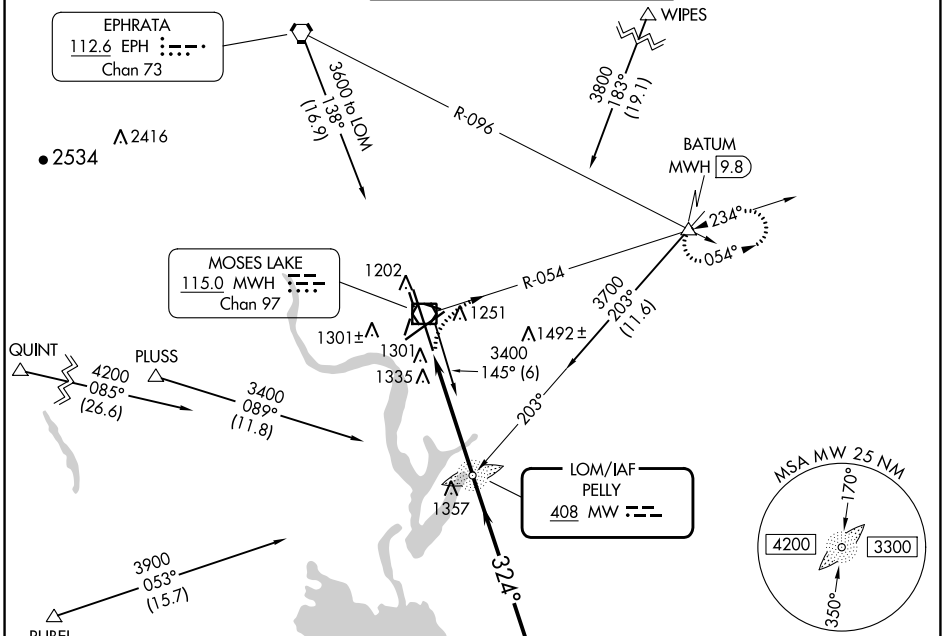
LOM MW 408	APP CRS 324°	Rwy Idg 13492
		TDZE 1167
		Apt Elev 1189

NDB RWY 32R

GRANT COUNTY INTL (MWH)

MALSR MISSED APPROACH: Climbing right turn to 4000 via MWH R-054 to BATUM INT/MWH 9.8 DME and hold.	
--	--

ATIS 119.05	GRANT COUNTY APP CON * 126.4 379.95	GRANT COUNTY TOWER * 118.25 (CTAF) 257.8 (EAST) 128.0 257.8 (WEST)	GND CON 121.9	UNICOM 122.95
-----------------------	---	--	-------------------------	-------------------------



NW-1, 26 DEC 2024 to 23 JAN 2025

NW-1, 26 DEC 2024 to 23 JAN 2025