

APP CRS	Rwy Idg	<b>10000</b>
<b>216°</b>	TDZE	<b>1166</b>
	Apt Elev	<b>1189</b>

# RNAV (RNP) Z RWY 22

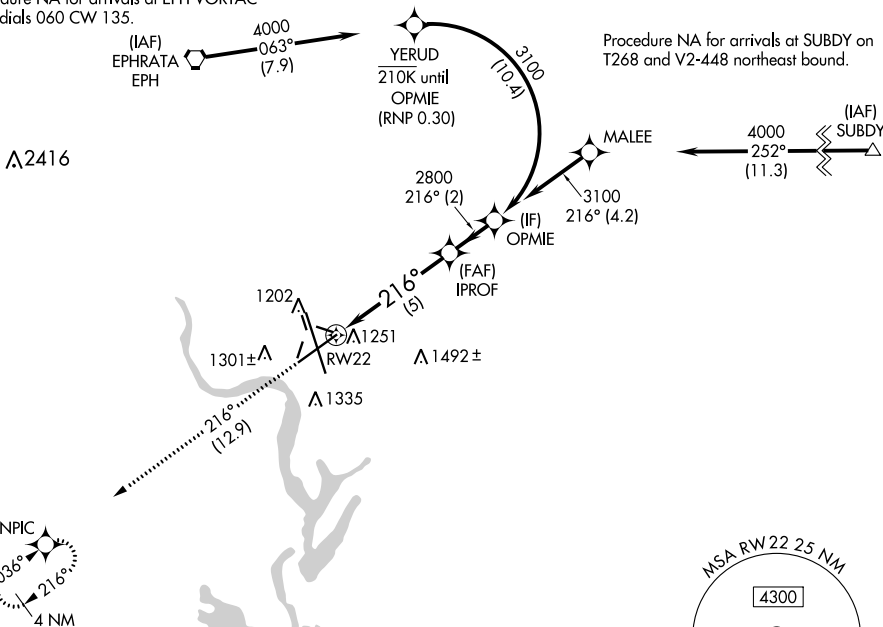
GRANT COUNTY INTL (MWH)

RNP AR APCH-GPS.	MISSED APPROACH: Climb to 4000 on track 216° to ONPIC and hold.
<p>▼ For uncompensated Baro-VNAV systems, procedure NA below</p> <p>▲ -1.5°C or above 54°C.</p>	

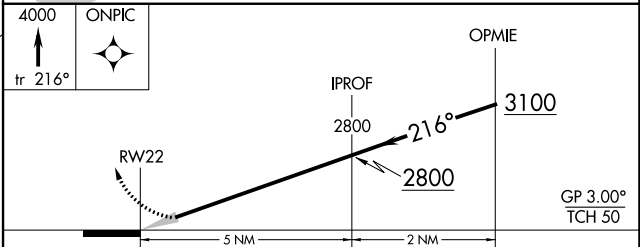
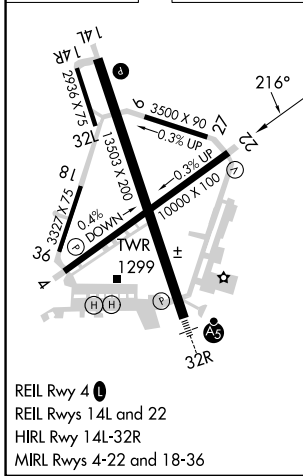
ATIS <b>119.05</b>	GRANT COUNTY APP CON * <b>126.4 379.95</b>	GRANT COUNTY TOWER * <b>118.25 (CTAF) 0 257.8 (EAST)</b> <b>128.0 257.8 (WEST)</b>	GND CON <b>121.9</b>	UNICOM <b>122.95</b>
-----------------------	---	--	-------------------------	-------------------------

Procedure NA for arrivals at EPH VORTAC on radials 060 CW 135.

Procedure NA for arrivals at SUBDY on T268 and V2-448 northeast bound.



ELEV 1189	<b>D</b>	TDZE 1166
-----------	----------	-----------



CATEGORY	A	B	C	D
RNP 0.10 DA	1421- <sup>3</sup> / <sub>4</sub> 255 (300- <sup>3</sup> / <sub>4</sub> )			
RNP 0.30 DA	1508-1 342 (400-1)			

**AUTHORIZATION REQUIRED**