

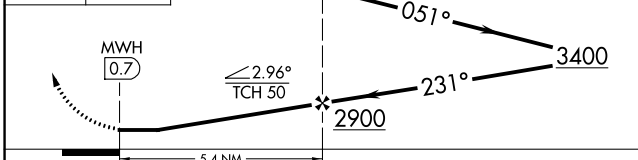
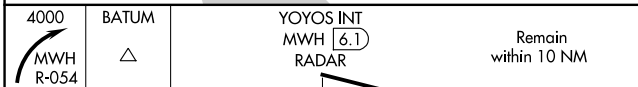
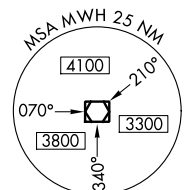
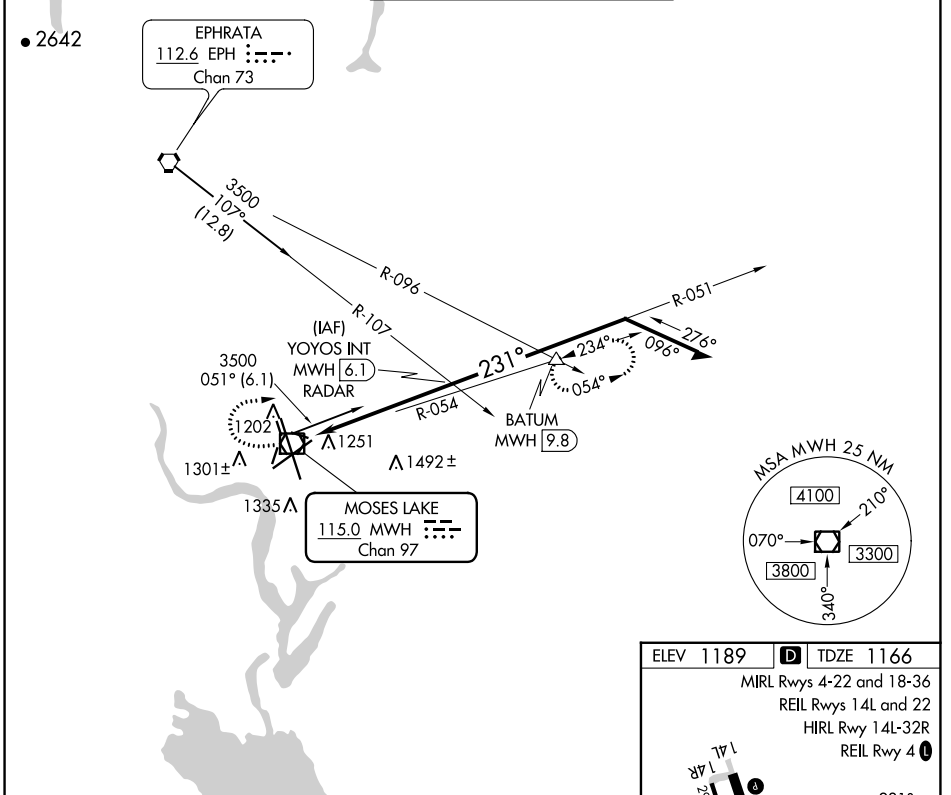
VOR/DME MWH <b>115.0</b> Chan <b>97</b>	APP CRS <b>231°</b>	Rwy ldg <b>10000</b> TDZE <b>1166</b> Apt Elev <b>1189</b>
---	------------------------	--

# VOR RWY 22

GRANT COUNTY INTL (MWH)

**MISSSED APPROACH:** Climbing right turn to 4000 via MWH R-054 to BATUM INT/MWH 9.8 DME and hold.

ATIS <b>119.05</b>	GRANT COUNTY APP CON * <b>126.4 379.95</b>	GRANT COUNTY TOWER * <b>118.25 (CTAF) 257.8 (EAST)</b> <b>128.0 257.8 (WEST)</b>	GND CON <b>121.9</b>	UNICOM <b>122.95</b>
-----------------------	---	--	-------------------------	-------------------------



ELEV 1189 **D** TDZE 1166

MIRL Rwys 4-22 and 18-36  
REIL Rwys 14L and 22  
HIRL Rwy 14L-32R  
REIL Rwy 4

FAF to MAP 5.4 NM

Knots	60	90	120	150	180
Min:Sec	5:24	3:36	2:42	2:10	1:48

CATEGORY	A	B	C	D
S-22	1760-1 594 (600-1)		1760-1½ 594 (600-1½)	1760-1¾ 594 (600-1¾)
CIRCLING	1760-1 571 (600-1)		1760-1½ 571 (600-1½)	1820-2 631 (700-2)

NW-1, 26 DEC 2024 to 23 JAN 2025

NW-1, 26 DEC 2024 to 23 JAN 2025