

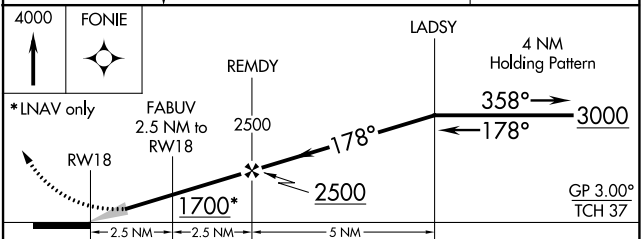
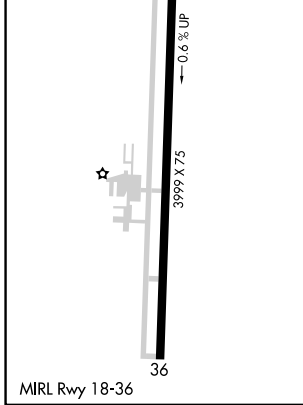
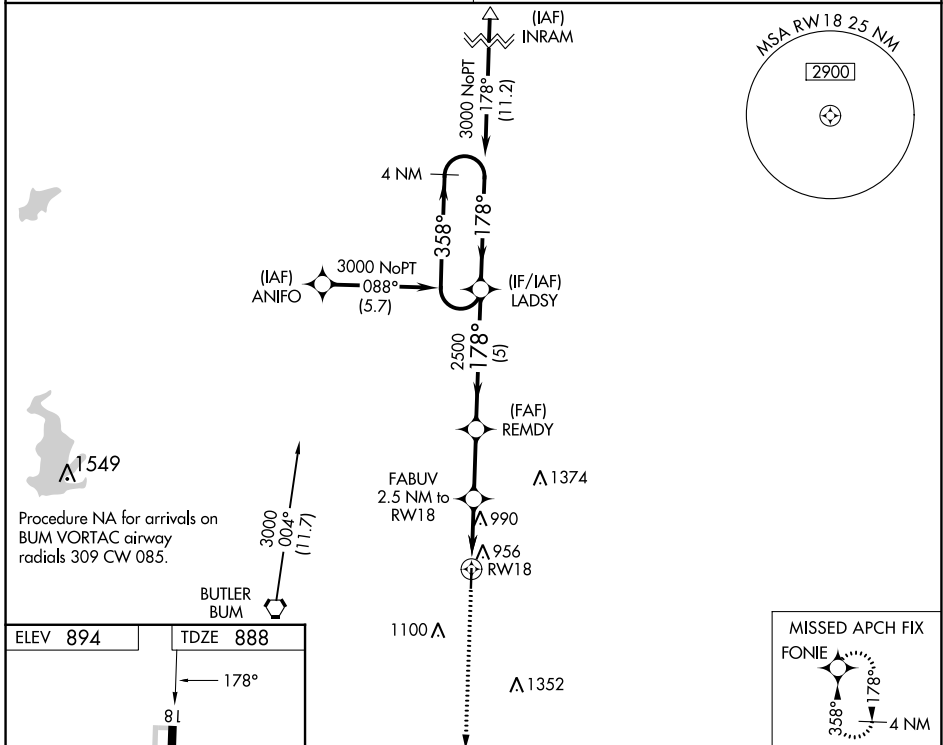
WAAS CH 82630 W18A	APP CRS 178°	Rwy Idg TDZE 888 Apt Elev 894
--	------------------------	---

RNAV (GPS) RWY 18

BUTLER MEML (BUM)

RNP APCH.	MISSED APPROACH: Climb to 4000 direct FONIE and hold, continue climb in hold to 4000.
<p>▼ Baro-VNAV NA. Use Clinton altimeter setting; when not received, use Charles B Wheeler Downtown altimeter setting and increase all DA/MDA 60 feet, increase LPV and LNAV/VNAV all Cats visibility ¼ mile.</p> <p>▲ NA</p>	

KANSAS CITY CENTER 125.55 327.0	CTAF 122.9
---	----------------------



CATEGORY	A	B	C	D
LPV DA	1220-1 $\frac{1}{8}$	332 (400-1 $\frac{1}{8}$)		NA
LNAV/VNAV DA	1220-1 $\frac{1}{8}$	332 (400-1 $\frac{1}{8}$)		NA
LNAV MDA	1340-1	452 (500-1)		NA

NC-3, 26 DEC 2024 to 23 JAN 2025

NC-3, 26 DEC 2024 to 23 JAN 2025