

LOC/DME I-TWO 111.35 Chan 50 (Y)	APP CRS 258°	Rwy Idg 26L 10200 26R 12197	TDZE 926 932	Apt Elev 944 944
---	------------------------	-----------------------------------	----------------------------------	--------------------------------------

ILS or LOC RWY 26L

ONTARIO INTL (ONT)

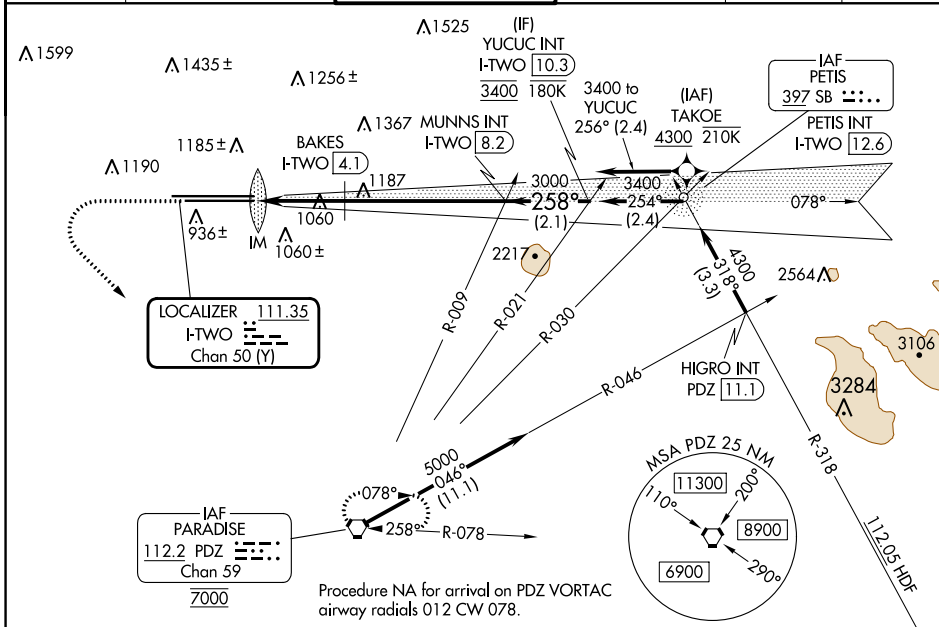
RNP APCH - GPS. From TAKOE.

⚠ Circling NA north of Rwy 8L-26R. For inop ALS, increase S-LOC 26L Cat C and D visibility to 2½ SM.

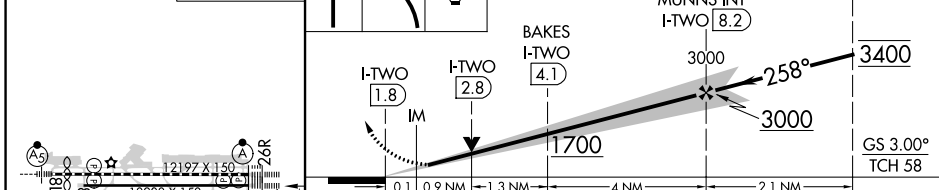


MISSED APPROACH: Climb to 2800 then climbing left turn to 5400 direct PDZ VORTAC and hold, continue climb-in-hold to 5400.

D-ATIS 124.25	SOCAL APP CON 127.0 318.2	ONTARIO TOWER 120.6 360.775	GND CON 121.9 257.8	CLNC DEL 132.9	CPDLC
-------------------------	-------------------------------------	---------------------------------------	-------------------------------	--------------------------	-------



ELEV 944	D TDZE 26L 926 TDZE 26R 932	2800	5400	PDZ	VGSI and ILS glidepath not coincident (VGSI Angle 3.00/TCH 74).	YUCUC INT I-TWO 10.3
----------	---------------------------------------	------	------	-----	---	----------------------



TDZ/CL Rws 8L, 26L and 26R HIRL Rws 8L-26R and 8R-26L	FAF to MAP 6.3 NM				
Knots	60	90	120	150	180
Min:Sec	6:18	4:12	3:09	2:31	2:06
BAKES FIX MINIMUMS (DME REQUIRED)					
C CIRCLING	1700-1 756 (800-1)	1700-1¼ 756 (800-1¼)	1700-1¾ 768 (800-1¾)	1700-2 768 (800-2)	
S-LOC 26L	1320/24	394 (400-½)	1320/35	394 (400-¾)	

SW-3, 26 DEC 2024 to 23 JAN 2025

SW-3, 26 DEC 2024 to 23 JAN 2025