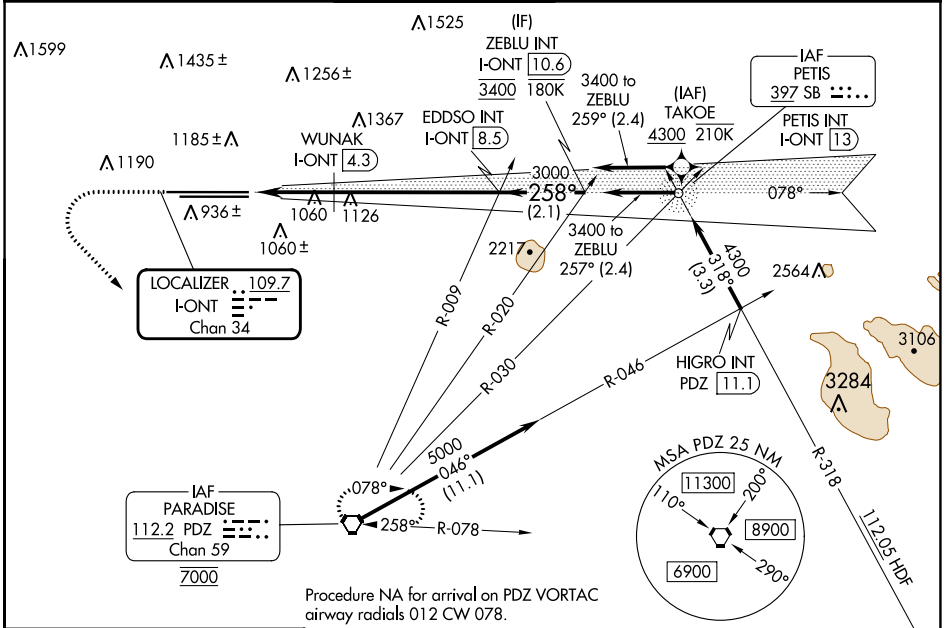


LOC/DME I-ONT 109.7 Chan 34	APP CRS 258°	Rwy Idg 26R 26L	TDZE 12197 932	10200 926
RNP APCH - GPS. From TAKOE.		Apt Elev 26R 26L	944	944

ILS or LOC RWY 26R

ONTARIO INTL (ONT)

RNP APCH - GPS. From TAKOE. Circling NA north of Rwy 8L-26R. For inop ALS, increase S-LOC 26R Cat C and D visibility to 2 SM.		ALSF-2 Rwy 26R 	ALSF-2 Rwy 26L 	MISSED APPROACH: Climb to 2800 then climbing left turn to 5400 direct PDZ VORTAC and hold, continue climb-in-hold to 5400.	
D-ATIS 124.25	SOCAL APP CON 127.0 318.2	ONTARIO TOWER 120.6 360.775	GND CON 121.9 257.8	CLNC DEL 132.9	CPDLC



ELEV 944	D	TDZE 26R 932 TDZE 26L 926	2800	5400	PDZ	VGSI and ILS glidepath not coincident (VGSI Angle 3.00/TCH 75).	ZEBLU INT I-ONT [10.6]
		WUNAK I-ONT [4.3] EDDSO INT I-ONT [8.5]		3000 258° 3400		GS 3.00° TCH 60	
TDZ/CL Rwys 8L, 26L and 26R HIRL Rwys 8L-26R and 8R-26L		FAF to MAP 6.3 NM		CATEGORY A B C D		S-ILS 26R 1132/18 200 (200-½)	
TDZ/CL Rwys 8L, 26L and 26R HIRL Rwys 8L-26R and 8R-26L		S-LOC 26R 1680/24 748 (800-½)		1680/40 748 (800-¾)		1680-1¾ 748 (800-1¾)	
S-LOC 26L 1680/55		754 (800-1)		1680-1¾ 754 (800-1¾)		1680-2 754 (800-2)	
S-LOC 26L 1680-1 736 (800-1)		1680-1¼ 736 (800-1¼)		1680-2¼ 736 (800-2¼)		1680-2½ 736 (800-2½)	
S-LOC 26R 1320/24		388 (400-½)		1320/35		388 (400-⅝)	

SW-3, 26 DEC 2024 to 23 JAN 2025

SW-3, 26 DEC 2024 to 23 JAN 2025