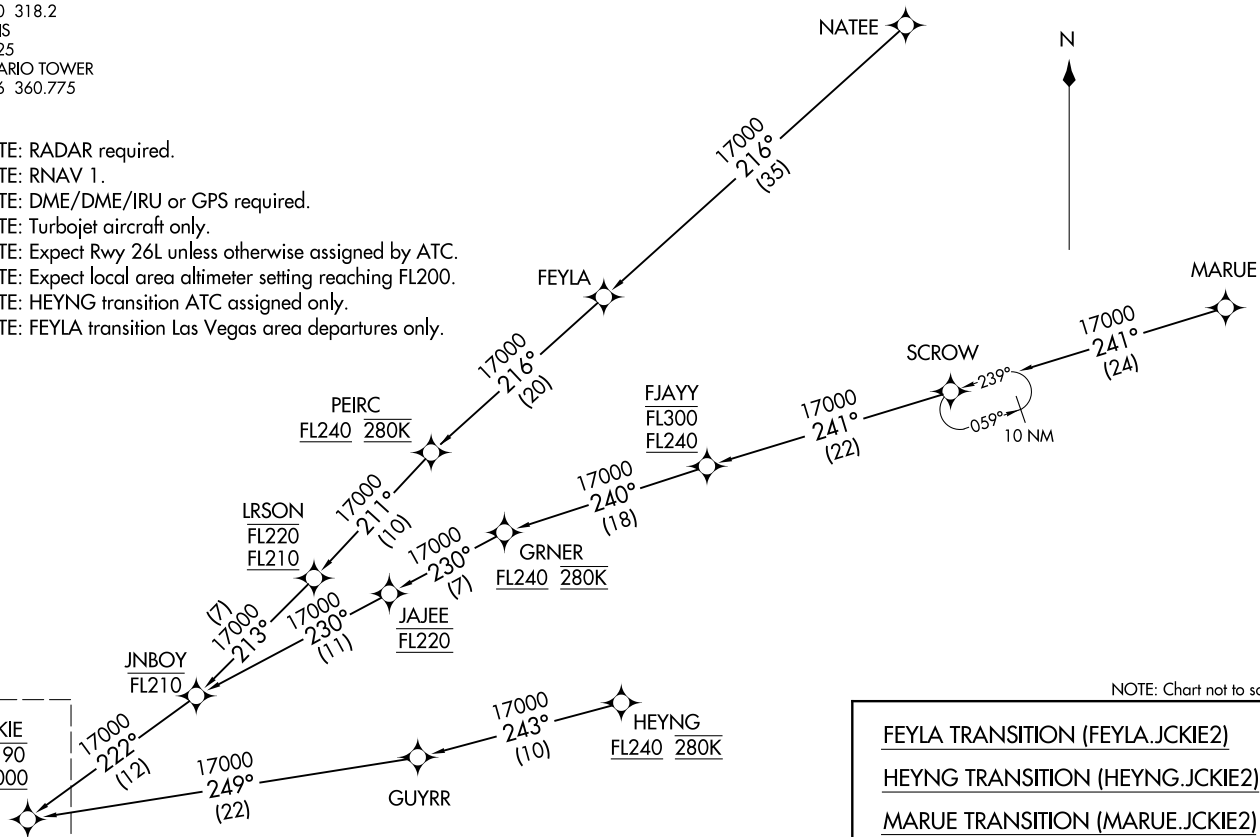


JCKIE TWO ARRIVAL (RNAV) Transition Routes  
(JCKIE.JCKIE2) 05DEC19

SOCAL APP CON  
127.0 318.2  
D-ATIS  
124.25  
ONTARIO TOWER  
120.6 360.775

- NOTE: RADAR required.
- NOTE: RNAV 1.
- NOTE: DME/DME/IRU or GPS required.
- NOTE: Turbojet aircraft only.
- NOTE: Expect Rwy 26L unless otherwise assigned by ATC.
- NOTE: Expect local area altimeter setting reaching FL200.
- NOTE: HEYNG transition ATC assigned only.
- NOTE: FEYLA transition Las Vegas area departures only.



See following page for arrival route.

(CONTINUED ON FOLLOWING PAGE)

NOTE: Chart not to scale.

FEYLA TRANSITION (FEYLA.JCKIE2)  
 HEYNG TRANSITION (HEYNG.JCKIE2)  
 MARUE TRANSITION (MARUE.JCKIE2)  
 NATEE TRANSITION (NATEE.JCKIE2)

(JCKIE.JCKIE2) 19339  
JCKIE TWO ARRIVAL (RNAV) Transition Routes  
A-965 (FAA)  
ONTARIO INTL (ONT)  
ONTARIO, CALIFORNIA

SOCAL APP CON  
127.0 318.2  
D-ATIS  
124.25  
ONTARIO TOWER  
120.6 360.775

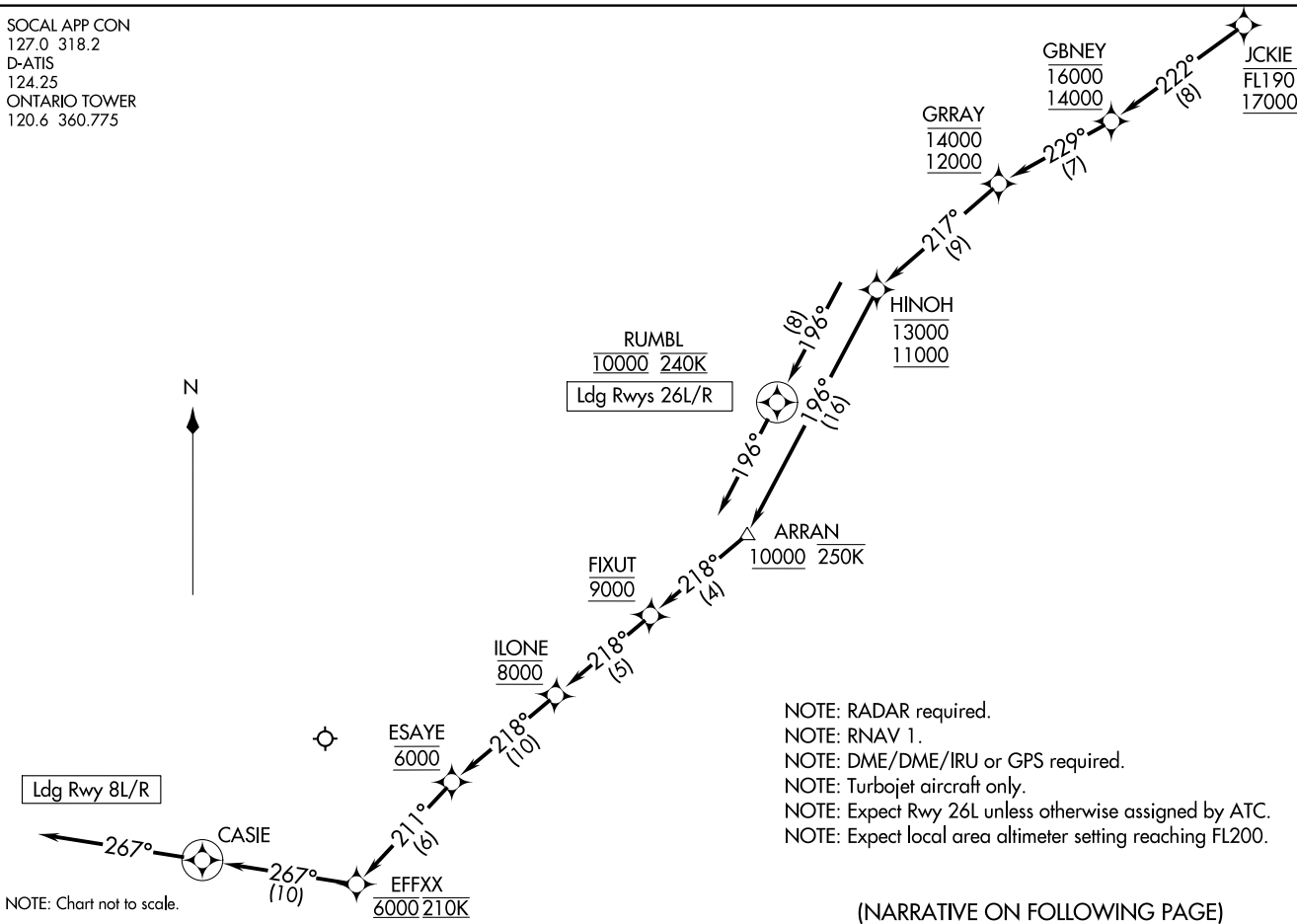
Ldg Rwy 8L/R

RUMBL  
10000 240K  
Ldg Rwys 26L/R

NOTE: RADAR required.  
NOTE: RNAV 1.  
NOTE: DME/DME/IRU or GPS required.  
NOTE: Turbojet aircraft only.  
NOTE: Expect Rwy 26L unless otherwise assigned by ATC.  
NOTE: Expect local area altimeter setting reaching FL200.

(NARRATIVE ON FOLLOWING PAGE)

NOTE: Chart not to scale.



ARRIVAL ROUTE DESCRIPTION

From JCKIE on track 222° to cross GBNEY between 14000 and 16000, then on track 229° to cross GRRAY between 12000 and 14000, then on track 217° to cross HINOH between 11000 and 13000.

LANDING RUNWAY 8L/R: From HINOH on track 196° to cross ARRAN at or above 10000 and at or below 250K, then on track 218° to cross FIXUT at 9000, then on track 218° to cross ILONE at 8000, then on track 218° to cross ESAYE at 6000, then on track 211° to cross EFFXX at 6000 and at 210K then on track 267° to CASIE, then on heading 267° or as assigned by ATC. Expect RNAV (RNP) Z RWY 8L approach or RADAR vectors to final approach course.

LANDING RWY 26L/R: From HINOH on track 196° to cross RUMBL at 10000 and at 240K, then on heading 196° or as assigned by ATC. Expect RNAV (RNP) Z RWY 26L approach or RADAR vectors to final approach course.

LOST COMMUNICATIONS

LANDING WEST: Proceed on the RNAV (RNP) Z RWY 26L approach or ILS or LOC RWY 26L approach.

LANDING EAST: Proceed on the RNAV (RNP) Z RWY 8L approach or ILS or LOC RWY 8L approach.

SW-3, 26 DEC 2024 to 23 JAN 2025

SW-3, 26 DEC 2024 to 23 JAN 2025