

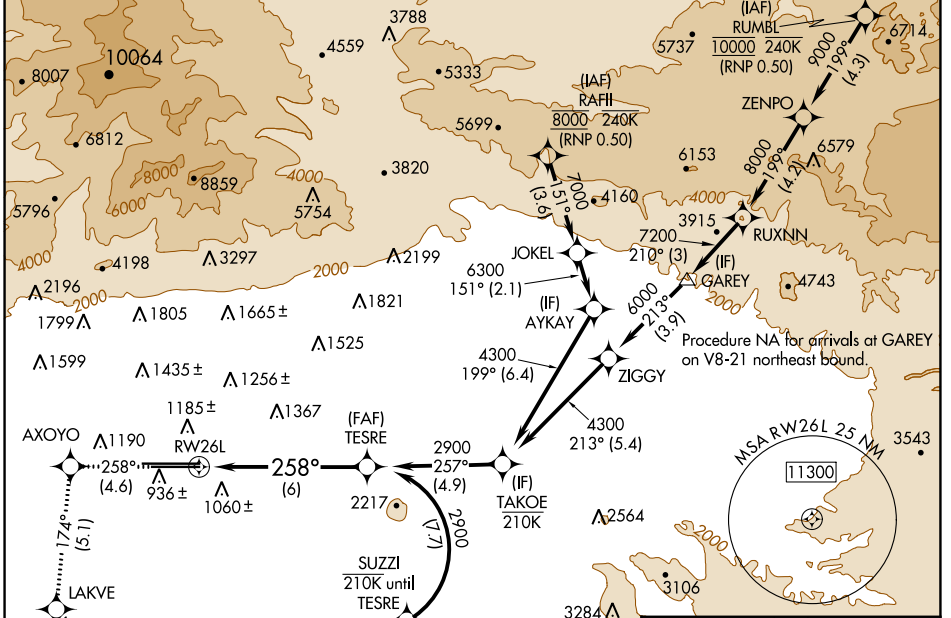
# RNAV (RNP) Z RWY 26L

ONTARIO INTL (ONT)

APP CRS	Rwy Idg	<b>10200</b>
<b>258°</b>	TDZE	<b>926</b>
	Apt Elev	<b>944</b>

RNP AR APCH - GPS.		ALSF-2 	MISSED APPROACH: Climb to 3400 on track 258° to AXOYO and track 174° to LAKVE and track 122° to MARIAM and track 079° to ADRYN and hold.
For uncompensated Baro-VNAV systems, procedure NA below 1°C or above 54°C. For inop ALS, increase RNP 0.10 visibility all Cats to RVR 4500, RNP 0.17 visibility all Cats to RVR 5000, RNP 0.30 visibility all Cats to RVR 6000.			

D-ATIS	SOCAL APP CON	ONTARIO TOWER	GND CON	CLNC DEL	CPDLC
<b>124.25</b>	<b>127.0 318.2</b>	<b>120.6 360.775</b>	<b>121.9 257.8</b>	<b>132.9</b>	



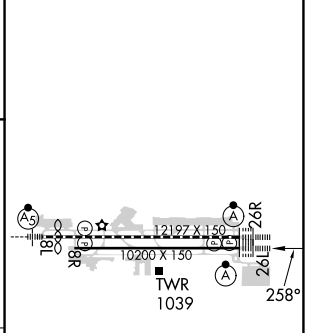
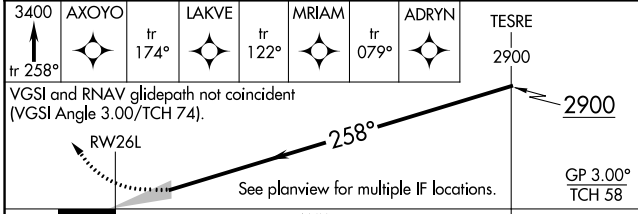
SW-3, 26 DEC 2024 to 23 JAN 2025

SW-3, 26 DEC 2024 to 23 JAN 2025

ELEV 944	<b>D</b> TDZE 926
----------	-------------------

Procedure NA for arrivals at GAREY on V8-21 northeast bound.

Procedure NA for arrival on PDZ VORTAC airway radials 012 CW 078.



CATEGORY	A	B	C	D
RNP 0.10 DA		1203/24	277 (300-½)	
RNP 0.17 DA		1245/24	319 (400-½)	
RNP 0.30 DA		1322/35	396 (400-¾)	

### AUTHORIZATION REQUIRED

TDZ/CL Rwys 8L, 26R and 26L  
 HIRL Rwys 8L-26R and 8R-26L