

APP CRS	Rwy Idg	10200
078°	TDZE	936
	Apt Elev	944

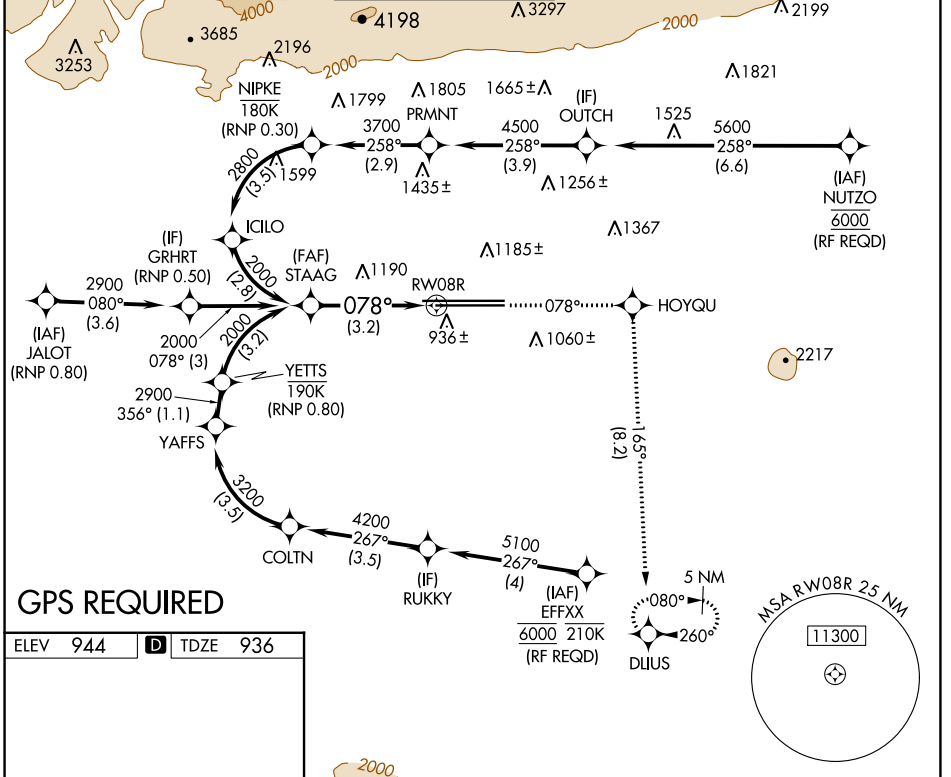
RNAV (RNP) Z RWY 8R

ONTARIO INTL (ONT)

NA For uncompensated Baro-VNAV systems, procedure NA below 2°C (36°F) or above 54°C (130°F).

MISSED APPROACH: Climb to 5300 on track 078° to HOYQU and on track 165° to DLIUS and hold, continue climb-in-hold to 5300.

D-ATIS 124.25	SOCAL APP CON 127.0 318.2	ONTARIO TOWER 120.6 360.775	GND CON 121.9 257.8	CLNC DEL 132.9	CPDLC
-------------------------	-------------------------------------	--	-------------------------------	--------------------------	-------

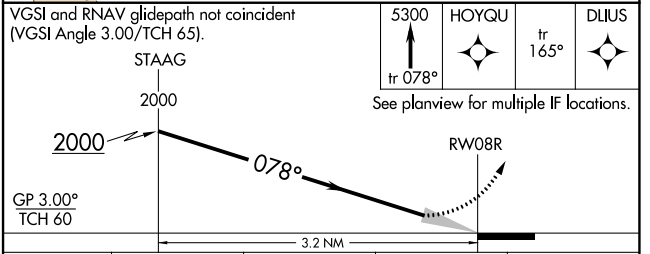
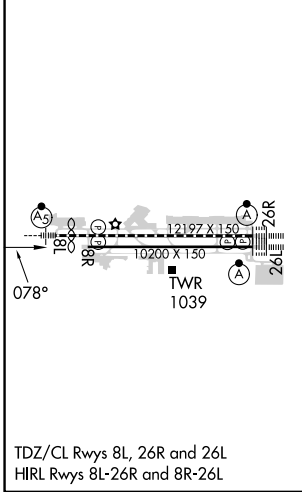


SW-3, 26 DEC 2024 to 23 JAN 2025

SW-3, 26 DEC 2024 to 23 JAN 2025

GPS REQUIRED

ELEV	944	D	TDZE	936
------	------------	----------	------	------------



CATEGORY	A	B	C	D
RNP 0.30 DA	1342-1½ 406 (400-1½)			

AUTHORIZATION REQUIRED