

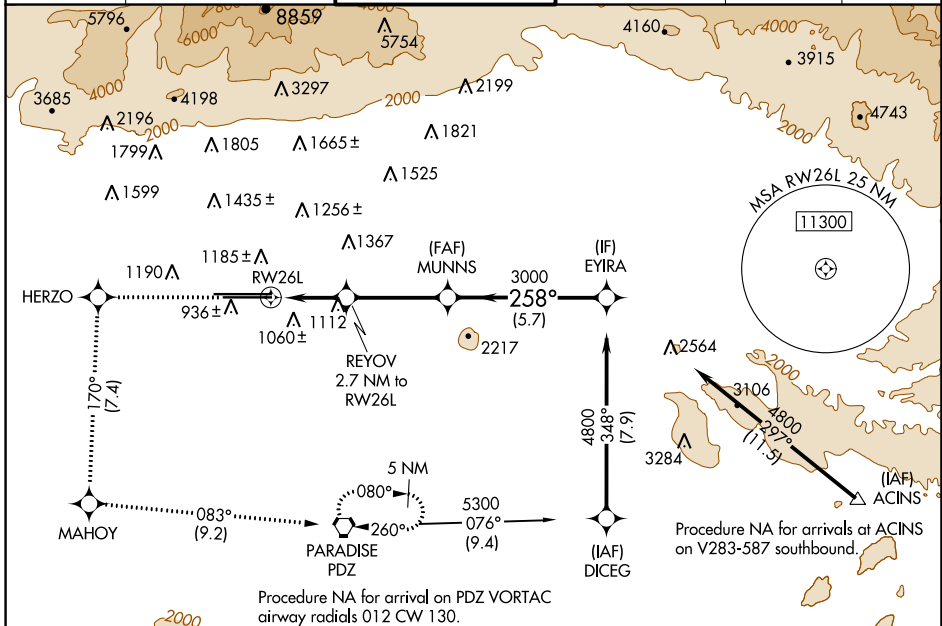
WAAS CH 90407 W26B	APP CRS 258°	Rwy Idg 10200 TDZE 926 Apt Elev 944
--	------------------------	--

RNAV (GPS) Y RWY 26L

ONTARIO INTL (ONT)

RNP APCH - GPS.		ALSF-2	MISSED APPROACH: Climb to 4700 direct HERZO and on track 170° to MAHOY and on track 083° to PDZ VORTAC, continue climb in hold to 4700.		
<p>▼ Circling NA north of Rwy 8L-26R. For uncompensated Baro-VNAV systems, procedure NA below 2°C or above 54°C. For inop ALS, increase all Cats LNAV/VNAV visibility to RVR 5500.</p>					

D-ATIS 124.25	SOCAL APP CON 127.0 318.2	ONTARIO TOWER 120.6 360.775	GND CON 121.9 257.8	CLNC DEL 132.9	CPDLC
-------------------------	-------------------------------------	---------------------------------------	-------------------------------	--------------------------	-------



ELEV 944	D	TDZE 926
-----------------	----------	-----------------

	4700	HERZO	tr 170°	MAHOY	tr 083°	PDZ	VGSI and RNAV glidepath not coincident (VGSI Angle 3.00/TCH 74).	MUNNNS	EYIRA
				REYOV 2.7 NM to RW26L				3000	4800
				1.2 NM to RW26L				1840	3000
				1.2 NM	1.5 NM	3.6 NM	5.7 NM		
								GP 3.00°	TCH 58
CATEGORY	A		B		C	D			
LPV DA			1126/18		200 (200-½)				
LNAV/VNAV DA			1267/30		341 (400-¾)				
LNAV MDA	1380/24		454 (500-½)		1380/45		454 (500-¾)		
C CIRCLING	1400-1		456 (500-1)		1500-1½		556 (600-1½)		1540-2 596 (600-2)

SW-3, 26 DEC 2024 to 23 JAN 2025

SW-3, 26 DEC 2024 to 23 JAN 2025