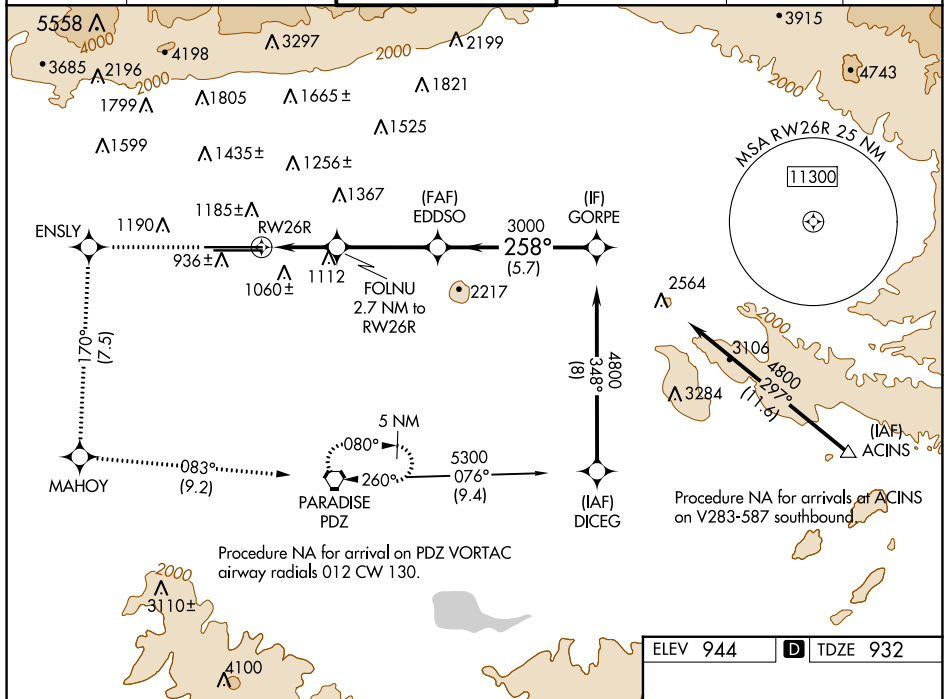


WAAS CH 53406 W26A	APP CRS 258°	Rwy Idg 12197 TDZE 932 Apt Elev 944
--	------------------------	--

RNAV (GPS) Y RWY 26R

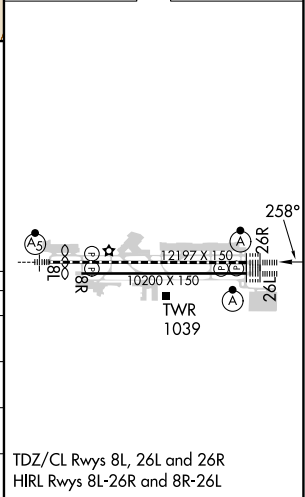
ONTARIO INTL (ONT)

RNP APCH - GPS.		ALSF-2	MISSED APPROACH: Climb to 4700 direct ENSLY and on track 170° to MAHOY and on track 083° to PDZ VORTAC and hold, continue climb-in-hold to 4700.		
▼ Circling NA north of Rwy 8L-26R. For uncompensated Baro-VNAV systems, procedure NA below 2°C or above 54°C.					
D-ATIS 124.25	SOCAL APP CON 127.0 318.2	ONTARIO TOWER 120.6 360.775	GND CON 121.9 257.8	CLNC DEL 132.9	CPDLC



ELEV 944	D TDZE 932
----------	-------------------

4700	↑	ENSLY	tr 170°	MAHOY	tr 083°	PDZ	VGSI and RNAV glidepath not coincident (VGSI Angle 3.00/TCH 75).	
							EDDSO	GORPE
							3000	4800
							1840	3000
							1.2 NM to RWY 26R	2.7 NM to RWY 26R
							1.2 NM	1.5 NM
							3.6 NM	5.7 NM
CATEGORY		A		B		C		D
LPV DA				1132/18		200 (200-½)		
LNAV/VNAV DA				1267/55		335 (400-1)		
LNAV MDA		1380/24		448 (500-½)		1380/45		448 (500-¾)
C CIRCLING		1400-1		456 (500-1)		1500-1½		1540-2
						556 (600-1½)		596 (600-2)



SW-3, 26 DEC 2024 to 23 JAN 2025

SW-3, 26 DEC 2024 to 23 JAN 2025

TDZ/CL Rwys 8L, 26L and 26R
HIRL Rwys 8L-26R and 8R-26L