


WAAS CH <b>45807</b> <b>W08B</b>	APP CRS <b>078°</b>	Rwy Idg <b>11200</b> TDZE <b>944</b> Apt Elev <b>944</b>
--	------------------------	--

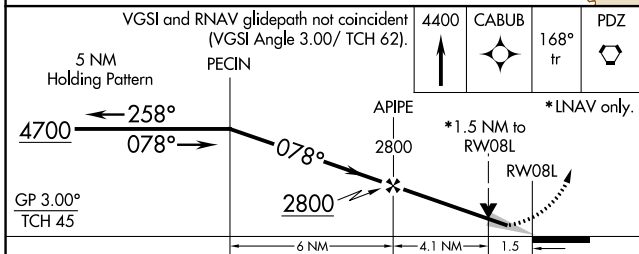
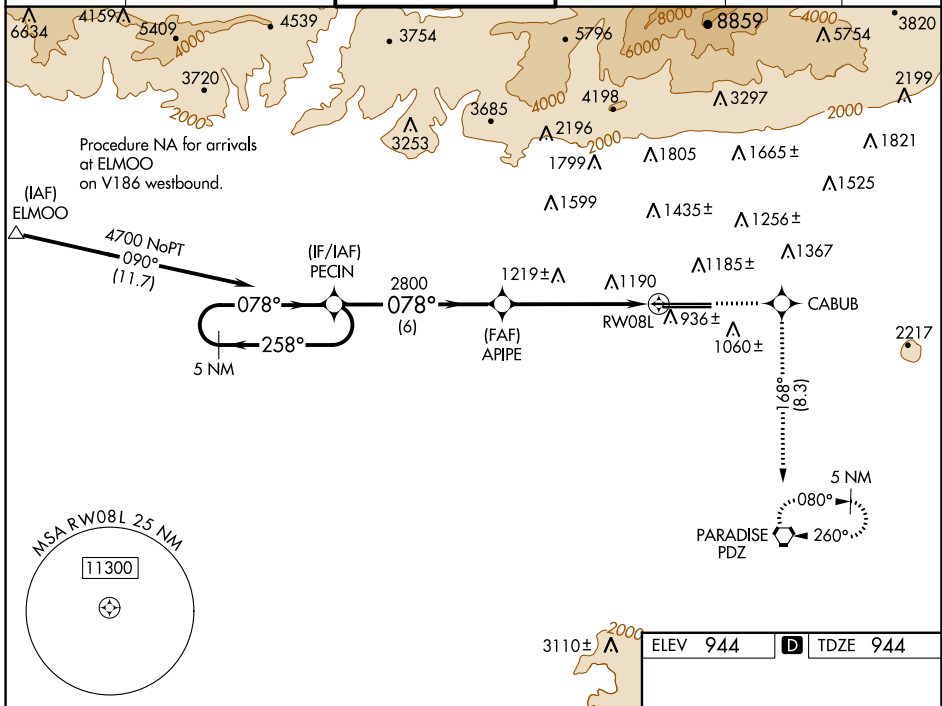
# RNAV (GPS) Y RWY 8L

ONTARIO INTL (ONT)

▼ For uncompensated Baro-VNAV systems, LNAV/VNAV NA below -16°C (4°F) or above 47°C (116°F). Circling NA north of Rwy 8L-26R.  
DME/DME RNP -0.3 NA. For inoperative MALSR increase LPV visibility all Cats to RVR 6000.

MALSR  MISSED APPROACH: Climb to 4400 direct CABUB and on track 168° to PDZ VORTAC and hold, continue climb-in-hold to 4700.

D-ATIS <b>124.25</b>	SOCAL APP CON <b>127.0 318.2</b>	ONTARIO TOWER <b>120.6 360.775</b>	GND CON <b>121.9 257.8</b>	CLNC DEL <b>132.9</b>	CPDLC
-------------------------	-------------------------------------	---------------------------------------	-------------------------------	--------------------------	-------



CATEGORY	A	B	C	D
LPV DA	1266/30	322 (400-5%)		
LNAV/VNAV DA	1520-1½	576 (600-1½)		
LNAV MDA	1480/24	536 (600-½)	1480/55	536 (600-1)
CIRCLING	1480-1	536 (600-1)	1540-1½	1600-2
			596 (600-1½)	656 (700-2)

ELEV 944

**D** TDZE 944

12197 X 150

10200 X 150

TWR 1039

168°

180°

078°

26R

26L

TDZ/CL Rwys 8L, 26R and 26L  
HIRL Rwys 8L-26R and 8R-26L

SW-3, 26 DEC 2024 to 23 JAN 2025

SW-3, 26 DEC 2024 to 23 JAN 2025