

WAAS CH <b>86320</b> <b>W22A</b>	APP CRS <b>222°</b>	Rwy Idg TDZE Apt Elev	<b>5004</b> <b>334</b> <b>338</b>
--	------------------------	-----------------------------	---

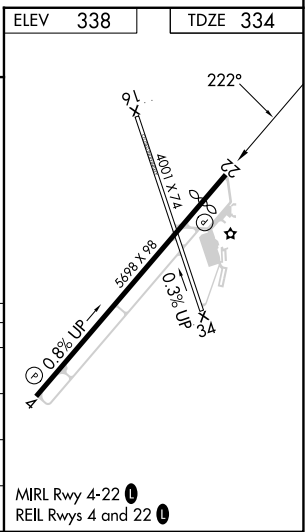
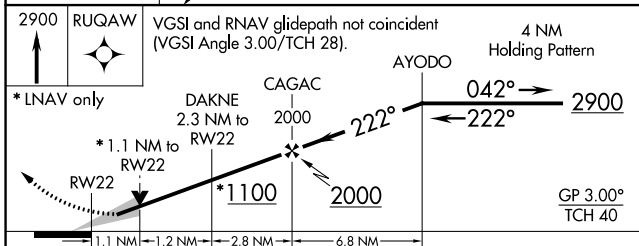
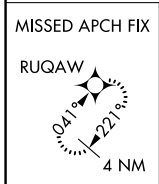
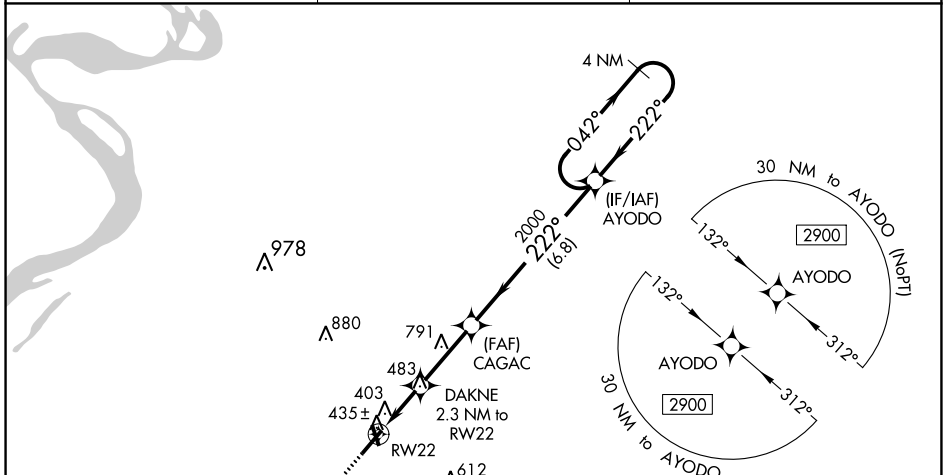
# RNAV (GPS) RWY 22

DYERSBURG RGNL (DYR)

**▼** For uncompensated Baro-VNAV systems, LNAV/VNAV NA below -15°C (5°F) or above 54°C (130°F).  
**▲** Baro-VNAV and VDP NA when using Blytheville Muni altimeter setting. DME/DME RNP-0.3 NA.  
 When local altimeter setting not received, use Blytheville Muni altimeter setting: increase LPV DA to 644 feet, and LNAV/VNAV DA to 676 feet and all MDA 60 feet; increase LPV visibility all Cats 1/8 SM, and LNAV/VNAV visibility all Cats, LNAV Cats C/D visibility and Circling Cat C visibility 1/4 SM.  
 Night landing: Rwy 16, 34 NA.

**MISSED APPROACH:**  
 Climb to 2900 direct  
 RUQAW and hold.

AWOS-3PT <b>135.625</b>	MEMPHIS CENTER <b>134.65 316.15</b>	UNICOM <b>123.05 (CTAF) 0</b>
----------------------------	--	----------------------------------



CATEGORY	A	B	C	D
LPV DA		584-7/8	250 (300-7/8)	
LNAV/VNAV DA		616-7/8	282 (300-7/8)	
LNAV MDA		700-1	366 (400-1)	
CIRCLING	740-1 402 (500-1)	800-1 462 (500-1)	1040-2 702 (800-2)	1240-3 902 (1000-3)

SE-1, 26 DEC 2024 to 23 JAN 2025

SE-1, 26 DEC 2024 to 23 JAN 2025