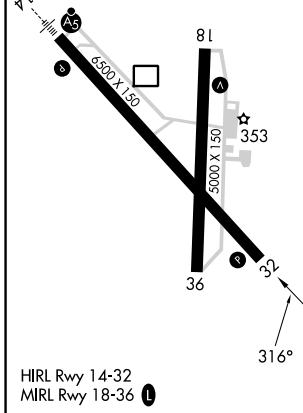
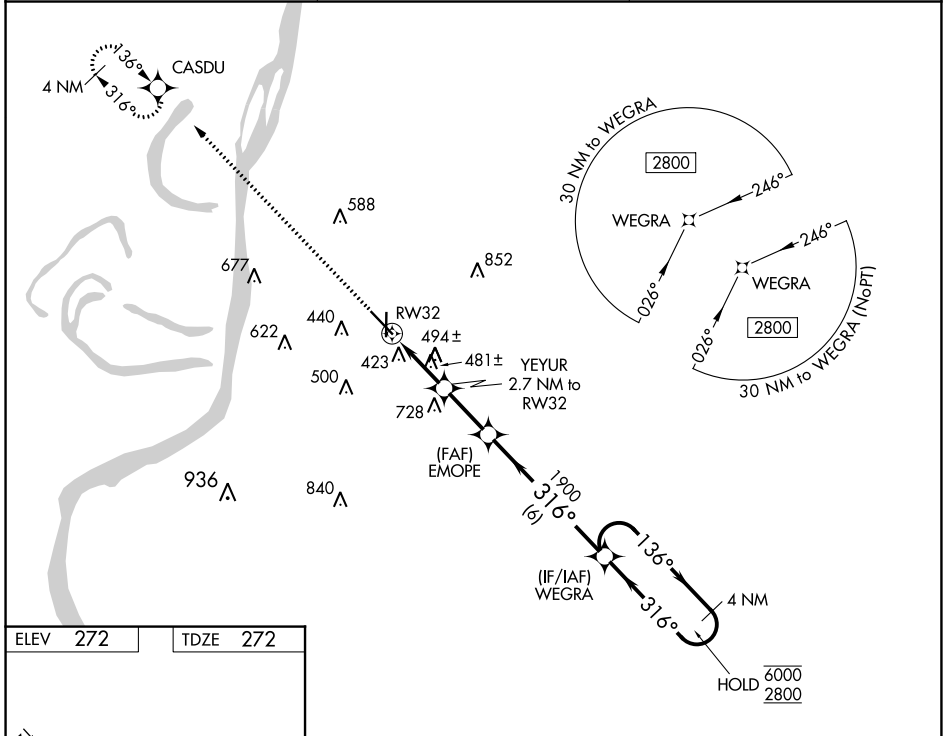


WAAS CH 90334 W32A	APP CRS 316°	Rwy ldg 6500 TDZE 272 Apt Elev 272
--	------------------------	---

RNAV (GPS) RWY 32

HARDY-ANDERS FLD/NATCHEZ-ADAMS COUNTY (HE/Z)

RNP APCH - GPS.		MISSED APPROACH: Climb to 2800 direct CASDU and hold.
<p>⚠ Circling Rwy 36 NA at night. Rwy 32 helicopter visibility reduction below ¾ SM NA.</p>		
AWOS-3PT 124.675	HOUSTON CENTER 120.975 299.6	UNICOM 122.8 (CTAF) 0



CASDU WEGRA	Visual Segment - Obstacles.		4 NM Holding Pattern	
	1160 1.3 NM to RW32 1.4 NM 2.7 NM to RW32 1900 6000 2800	1900 316°		6000 2800 316°
	1.3 NM	1.4 NM	2.3 NM	6 NM
CATEGORY	A	B	C	D
LP MDA	740-1	468 (500-1)	740-1⅓	468 (500-1⅓)
LNNAV MDA	800-1	528 (600-1)	800-1½	528 (600-1½)
CIRCLING	800-1 528 (600-1)	820-1 548 (600-1)	1020-2¼ 748 (800-2¼)	1220-3 948 (1000-3)

SC-4, 26 DEC 2024 to 23 JAN 2025

SC-4, 26 DEC 2024 to 23 JAN 2025