

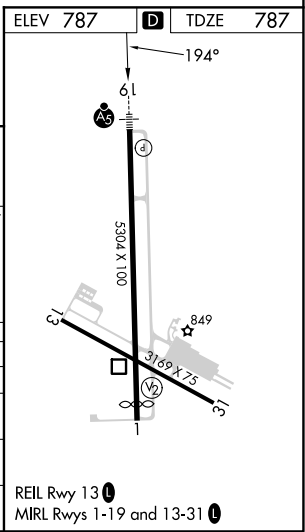
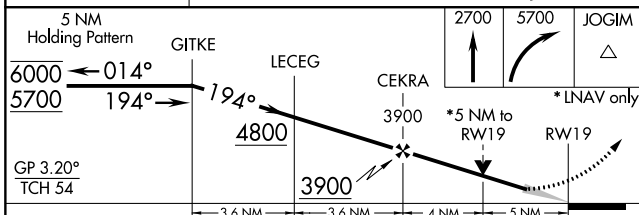
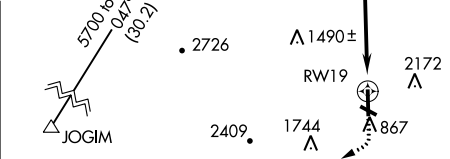
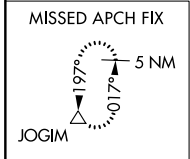
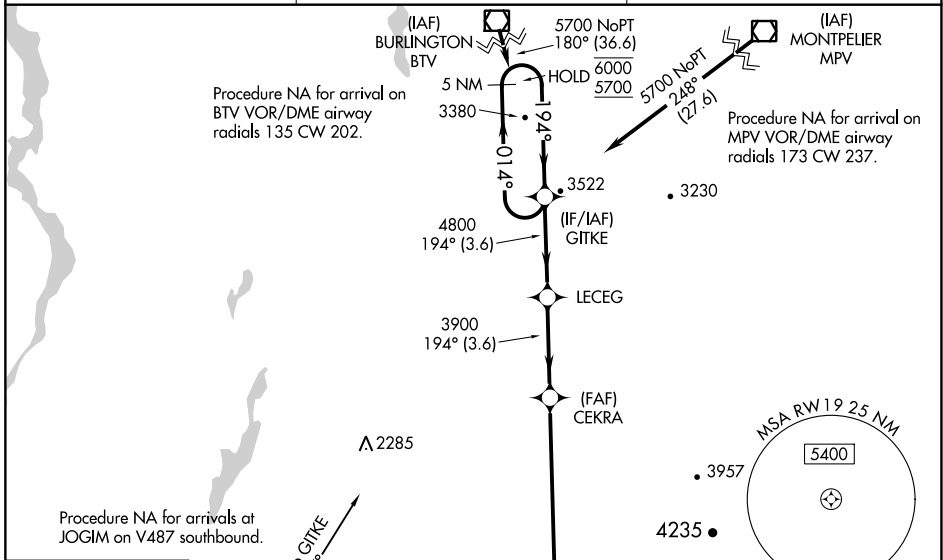
WAAAS CH <b>65830</b> <b>W19A</b>	APP CRS <b>194°</b>	Rwy Idg TDZE <b>787</b> Apt Elev <b>787</b>	<b>5004</b>
---	------------------------	---	-------------

# RNAV (GPS) Y RWY 19

RUTLAND/SOUTHERN VERMONT RGNL (RUT)

RNP APCH.	<p>Circling NA northeast of Rwy 19 and 31. Circling Rwy 13, 31 NA at night. Inop table does not apply to LPV, LNAV/VNAV all Cats; LNAV Cat C. Baro-VNAV NA.</p>	MALSR	<p>MISSED APPROACH: Climb to 2700, then climbing right turn to 5700 direct JOGIM and hold, continue climb-in-hold to 5700.</p>
-----------	---	-------	--

AWOS-3PT <b>118.375</b>	BOSTON CENTER <b>135.7 282.2</b>	UNICOM <b>122.8 (CTAF) 0</b>
----------------------------	-------------------------------------	---------------------------------



CATEGORY	A	B	C	D
LPV DA	2270-5	1483 (1500-5)		NA
LNAV/VNAV DA	2223-5	1436 (1500-5)		NA
LNAV MDA	2560-3/4 1773 (1800-3/4)	2560-1 1773 (1800-1)	2560-3 1773 (1800-3)	NA
CIRCLING	2560-1 1/4 1773 (1800-1 1/4)	2560-1 1/2 1773 (1800-1 1/2)	2560-3 1773 (1800-3)	NA

NE-1, 26 DEC 2024 to 23 JAN 2025

NE-1, 26 DEC 2024 to 23 JAN 2025