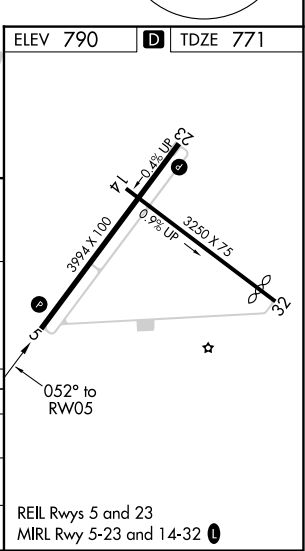
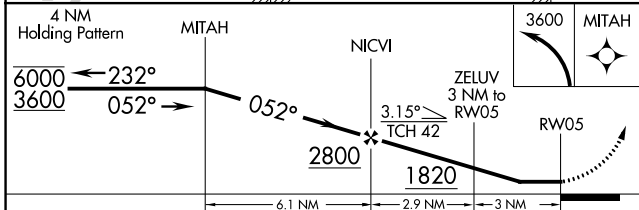
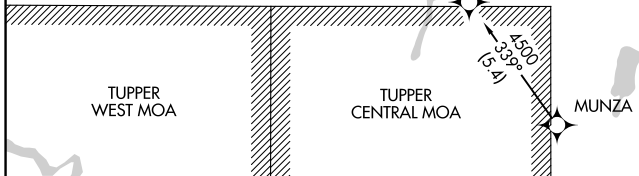
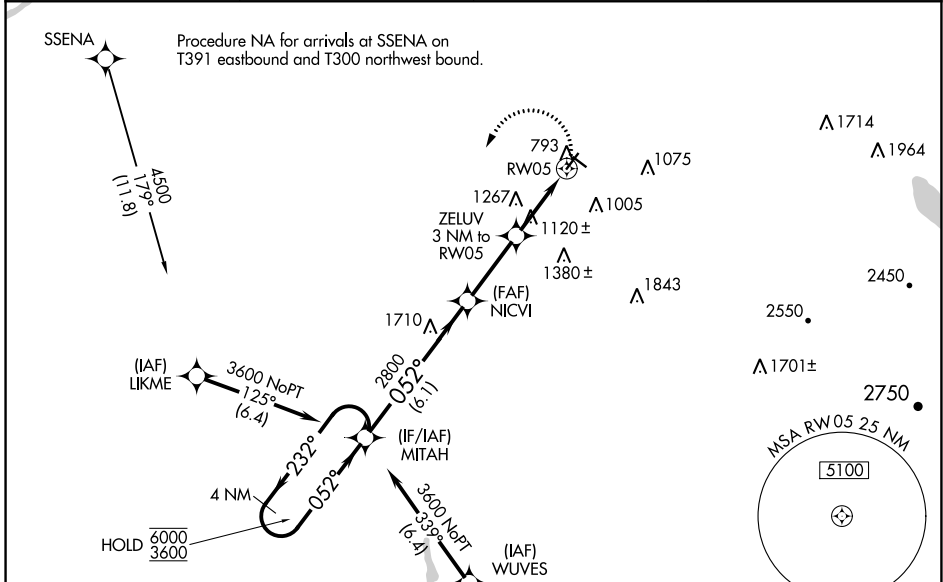


WAAS CH 93729 W05A	APP CRS 052°	Rwy Idg TDZE Apt Elev	3994 771 790
--	------------------------	-----------------------------	---

RNAV (GPS) RWY 5

MALONE-DUFORT (MAL)

RNP APCH.			MISSED APPROACH: Climbing left turn to 3600 direct MITAH and hold.
<p>NA Rwy 5 helicopter visibility reduction below 1 SM NA. Use Massena Intl-Richards fld altimeter setting; when not received, use Adirondack Rgnl altimeter setting and increase all MDA 60 feet and increase LP Cat C visibility 1/2 SM and Circling Cat A and C visibility 1/2 SM. Straight-in and Circling Rwy 5 NA at night.</p>			
AWOS-AV 122.8	MSS ASOS 128.075	BOSTON CENTER 135.25 377.1	UNICOM 122.8 (CTAF)



CATEGORY	A	B	C	D
LP MDA	1520-1 749 (800-1)	1520-1 1/4 749 (800-1 1/4)	1520-2 749 (800-2)	NA
LNAV MDA	1580-1 809 (800-1)	1580-1 1/4 809 (800-1 1/4)	1580-2 1/2 809 (800-2 1/2)	NA
C CIRCLING	1580-1 790 (800-1)	1580-1 1/4 790 (800-1 1/4)	1720-2 3/4 930 (1000-2 3/4)	NA

REIL Rwy 5 and 23
MIRL Rwy 5-23 and 14-32

NE-2, 26 DEC 2024 to 23 JAN 2025

NE-2, 26 DEC 2024 to 23 JAN 2025