

WAAS CH <b>56220</b> <b>W20A</b>	APP CRS <b>194°</b>	Rwy Idg TDZE Apt Elev	<b>5504</b> <b>1545</b> <b>1573</b>
----------------------------------------	------------------------	-----------------------------	-------------------------------------------

# RNAV (GPS) RWY 20

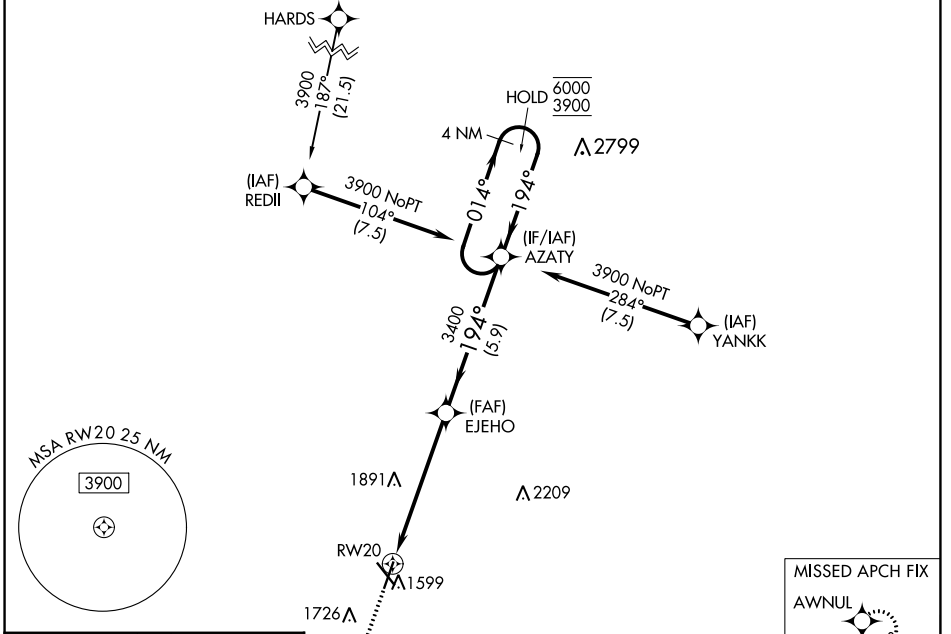
NORFOLK RGNL/KARL STEFAN MEML FLD (OFK)

RNP APCH - GPS.

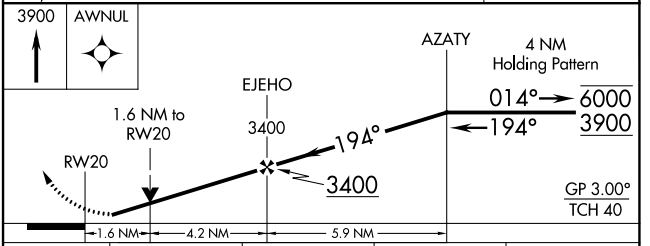
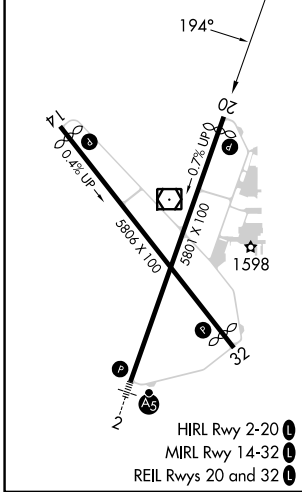
▼ Rwy 20 helicopter visibility reduction below ¾ SM NA. For uncompensated Baro-VNAV systems, LNAV/VNAV NA below -23°C or above 54°C.

MISSED APPROACH: Climb to 3900 direct AWNUL and hold.

ASOS <b>119.025</b>	MINNEAPOLIS CENTER <b>125.025 235.625</b>	UNICOM <b>122.7 (CTAF) 0</b>
------------------------	----------------------------------------------	---------------------------------



ELEV 1573	<b>D</b>	TDZE 1545
-----------	----------	-----------



CATEGORY	A	B	C	D
LPV DA	1795-1 250 (300-1)			
LNAV/VNAV DA	1799-1 254 (300-1)			
LNAV MDA	2080-1	535 (600-1)	2080-1½	535 (600-1½)
<b>CIRCLING</b>	2080-1 507 (600-1)	2100-1 527 (600-1)	2260-2 687 (700-2)	2360-2½ 787 (800-2½)

NC-2, 26 DEC 2024 to 23 JAN 2025

NC-2, 26 DEC 2024 to 23 JAN 2025