

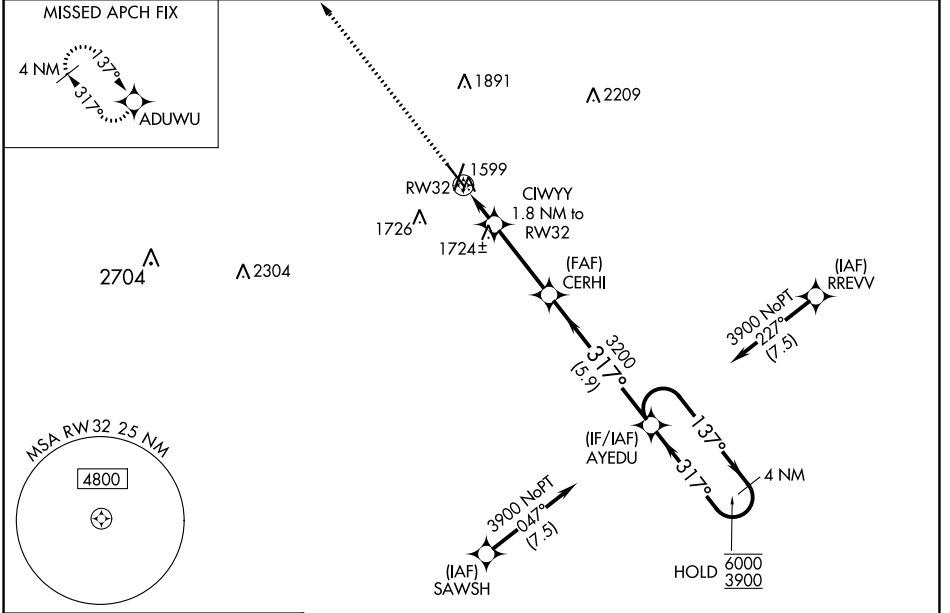
WAAS CH 86415 W32A	APP CRS 317°	Rwy Idg TDZE Apt Elev	5160 1560 1573
--	------------------------	-----------------------------	---

RNAV (GPS) RWY 32

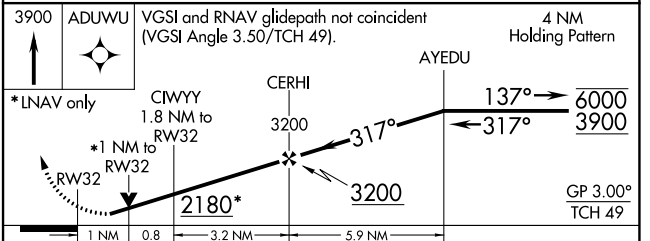
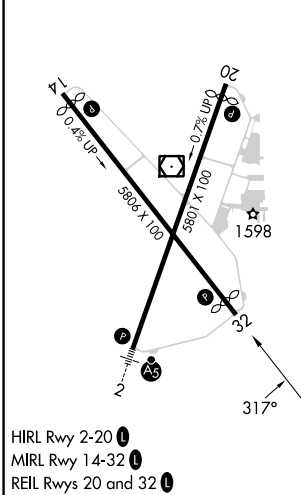
NORFOLK RGNL/KARL STEFAN MEML FLD (OFK)

RNP APCH.	MISSED APPROACH: Climb to 3900 direct ADUWU and hold.
<p>▼ Rwy 32 helicopter visibility reduction below 3/4 SM NA.</p> <p>▲ For uncompensated Baro-VNAV systems, LNAV/VNAV NA below -22°C or above 54°C.</p>	

ASOS 119.025	MINNEAPOLIS CENTER 125.025 235.625	UNICOM 122.7 (CTAF)
------------------------	--	-------------------------------



ELEV 1573	D	TDZE 1560
-----------	----------	-----------



CATEGORY	A	B	C	D
LPV DA	1858-1		298 (300-1)	
LNAV/VNAV DA	2019-1 ³ / ₈		459 (500-1 ³ / ₈)	
LNAV MDA	1980-1	420 (500-1)	1980-1 ¹ / ₈	420 (500-1 ¹ / ₈)
C CIRCLING	2060-1 487 (500-1)	2100-1 527 (600-1)	2260-2 687 (700-2)	2360-2 ¹ / ₂ 787 (800-2 ¹ / ₂)

NC-2, 26 DEC 2024 to 23 JAN 2025

NC-2, 26 DEC 2024 to 23 JAN 2025