

|  |                        |                             |   |
|--|------------------------|-----------------------------|---|
| WAAS<br>CH <b>99615</b><br><b>W12A</b> | APP CRS<br><b>125°</b> | Rwy Idg<br>TDZE<br>Apt Elev | <b>5301</b><br><b>1128</b><br><b>1156</b> |
|--|------------------------|-----------------------------|---|

# RNAV (GPS) RWY 12

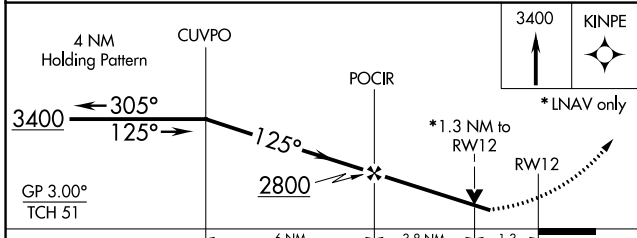
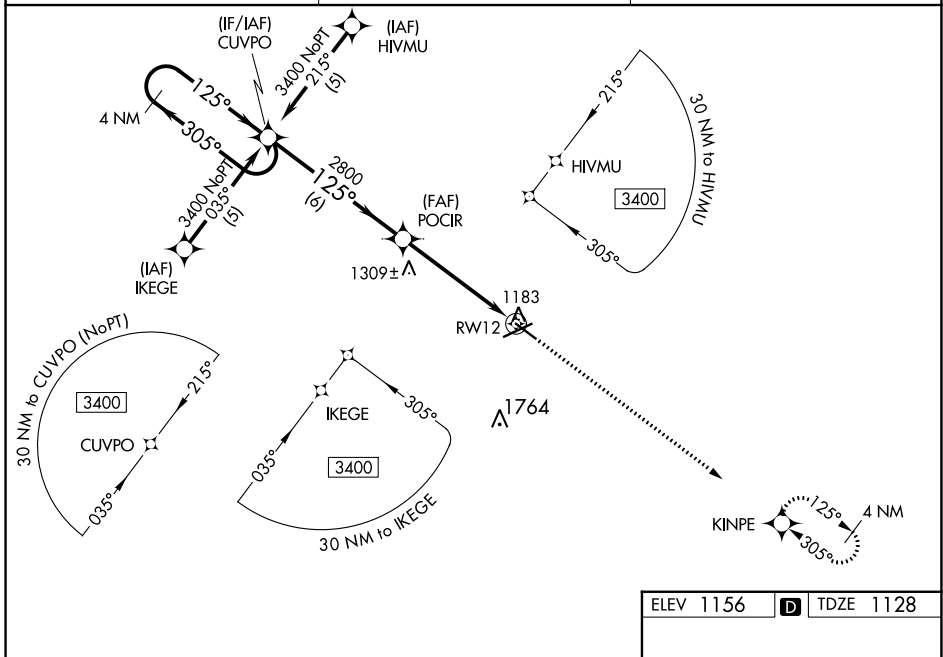
FORT DODGE RGNL (FOD)

RNP APCH.

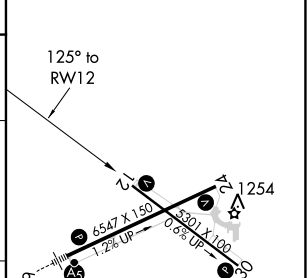
▼ For uncompensated Baro-VNAV systems, LNAV/VNAV NA below -17°C or above 54°C. Visibility reduction by helicopters NA. When local altimeter setting not received, use Webster City altimeter setting: increase LPV DA to 1447 feet and visibility all Cats ¼ SM; increase LNAV/VNAV DA to 1495 feet; increase all MDAs 60 feet and Circling Cat C visibility ¼ SM. VDP and Baro-VNAV NA when using Webster City altimeter setting.

MISSED APPROACH: Climb to 3400 direct KINPE and hold.

|                            |  |                                 |
|----------------------------|--|---------------------------------|
| AWOS-3PT<br><b>118.775</b> | MINNEAPOLIS CENTER<br><b>134.0 288.3</b> | UNICOM<br><b>123.0 (CTAF) 0</b> |
|----------------------------|--|---------------------------------|



|           |   |           |
|-----------|---|-----------|
| ELEV 1156 | D | TDZE 1128 |
|-----------|---|-----------|



| CATEGORY     | A                     | B                     | C                       | D                       |
|--------------|-----------------------|-----------------------|-------------------------|-------------------------|
| LPV DA       |                       | 1405-1                | 277 (300-1)             |                         |
| LNAV/VNAV DA |                       | 1453-1¼               | 325 (300-1¼)            |                         |
| LNAV MDA     | 1560-1                | 432 (500-1)           | 1560-1½<br>432 (500-1¼) | 1560-1½<br>432 (500-1½) |
| CIRCLING     | 1560-1<br>404 (500-1) | 1620-1<br>464 (500-1) | 1740-1½<br>584 (600-1½) | 2080-3<br>924 (1000-3)  |

MIRL Rwy 12-30 0  
HIRL Rwy 6-24 0  
REIL Rwy 12, 24 and 30 0

NC-3, 26 DEC 2024 to 23 JAN 2025

NC-3, 26 DEC 2024 to 23 JAN 2025