

WAAS CH 61015 W06A	APP CRS 063°	Rwy Idg TDZE 1107 Apt Elev 1156
--	------------------------	---

RNAV (GPS) RWY 6

FORT DODGE RGNL (FOD)

RNP APCH.

⚠ Baro-VNAV NA when using Webster City altimeter setting. For uncompensated Baro-VNAV systems, LNAV/VNAV NA below -17°C or above 54°C. VDP NA when using Webster City altimeter setting. When local altimeter setting not received, use Webster City altimeter setting: increase LPV DA to 1349 feet; increase LNAV/VNAV DA to 1567 feet and all Cats visibility ¼ SM; increase all MDAs 60 feet and LNAV Cats C/D and Circling Cat C visibility ¼ SM. For inoperative MALSRR when using Webster City altimeter setting, increase LPV all Cats visibility to 1 mile.

MALSRR

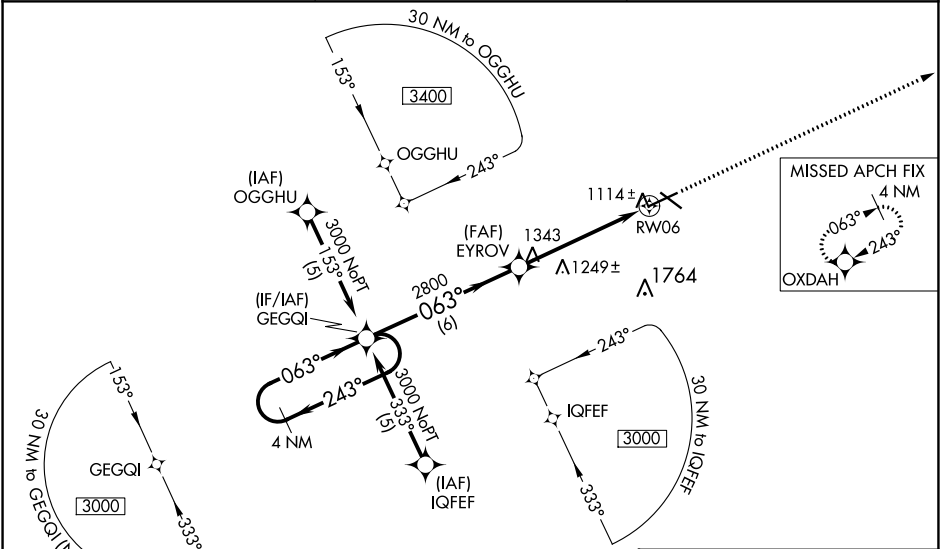


MISSED APPROACH:
Climb to 3000 direct OXDAH and hold.

AWOS-3PT
118.775

MINNEAPOLIS CENTER
134.0 288.3

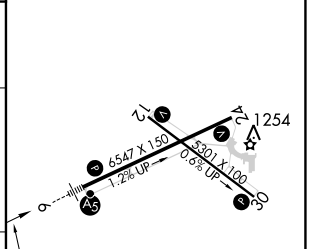
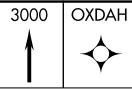
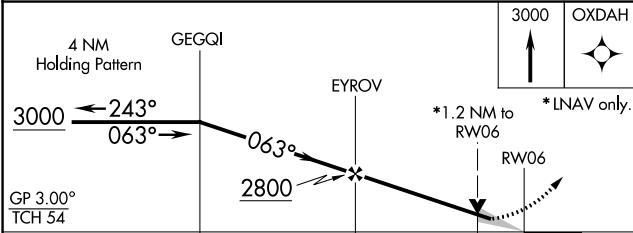
UNICOM
123.0 (CTAF)



NC-3, 26 DEC 2024 to 23 JAN 2025

NC-3, 26 DEC 2024 to 23 JAN 2025

ELEV 1156 **D** TDZE 1107



CATEGORY	A	B	C	D
LPV DA		1307-½	200 (200-½)	
LNAV/VNAV DA		1525-1	418 (400-1)	
LNAV MDA	1500-½	393 (400-½)		1500-1 393 (400-1)
CIRCLING	1560-1 404 (500-1)	1620-1 464 (500-1)	1740-1½ 584 (600-1½)	2080-3 924 (1000-3)

063° to RWY 06

MIRL Rwy 12-30 **⚠**
HIRL Rwy 6-24 **⚠**
REIL Rws 12, 24 and 30 **⚠**