

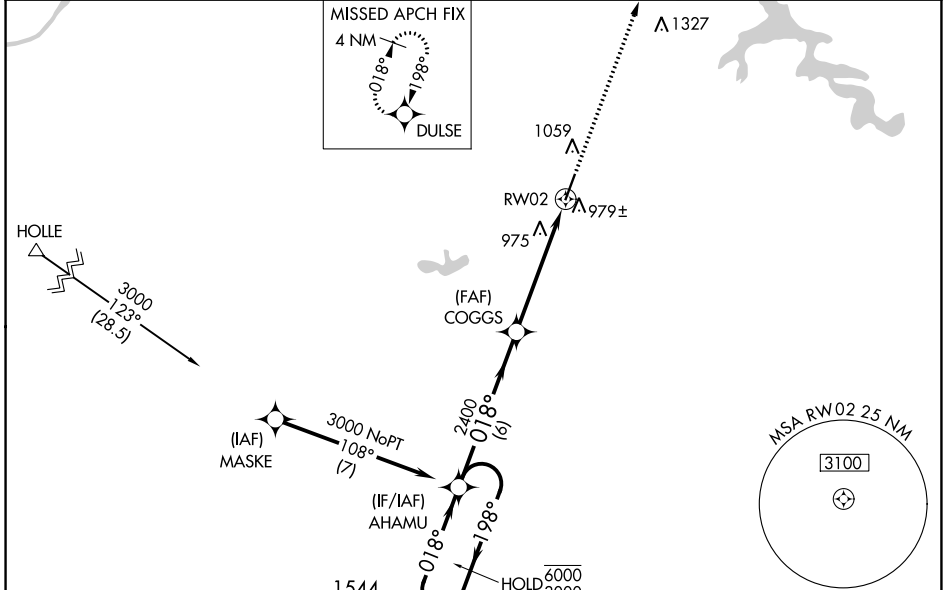
WAAS CH 50201 W02A	APP CRS 018°	Rwy ldg 5602 TDZE 755 Apt Elev 771
--	------------------------	---

RNAV (GPS) RWY 2

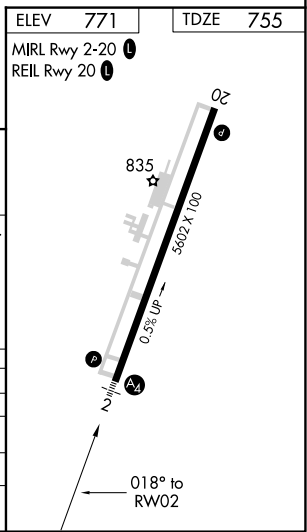
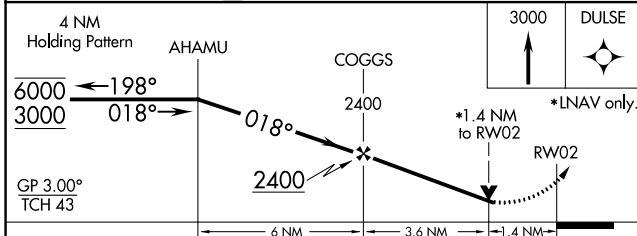
MC ALESTER RGNL (MLC)

RNP APCH.	MALS	MISSED APPROACH: Climb to 3000 direct DULSE and hold.
<p>▼ Rwy 2 helicopter visibility reduction below 3/4 SM NA.</p> <p>▲ For uncompensated Baro-VNAV systems, LNAV/VNAV NA below -13°C or above 54°C.</p>		

ASOS 120.425	FORT WORTH CENTER 132.2 338.35	UNICOM 122.95 (CTAF) 0
------------------------	--	----------------------------------



ELEV	771	TDZE	755
MIRL Rwy 2-20	1	REIL Rwy 20	1



CATEGORY	A	B	C	D
LPV DA		1227-1 1/8	472 (500-1 1/8)	
LNAV/VNAV DA		1292-1 1/4	537 (600-1 1/4)	
LNAV MDA	1240-3/4	485 (500-3/4)	1240-1 1/8	485 (500-1 1/8)
C CIRCLING	1360-1	589 (600-1)	1360-1 1/2	1420-2 649 (700-2)

SC-1, 26 DEC 2024 to 23 JAN 2025

SC-1, 26 DEC 2024 to 23 JAN 2025