

WAAS CH 40230 W34A	APP CRS 338°	Rwy Idg TDZE Apl Elev	4800 202 213
--	------------------------	-----------------------------	---

RNAV (GPS) RWY 34

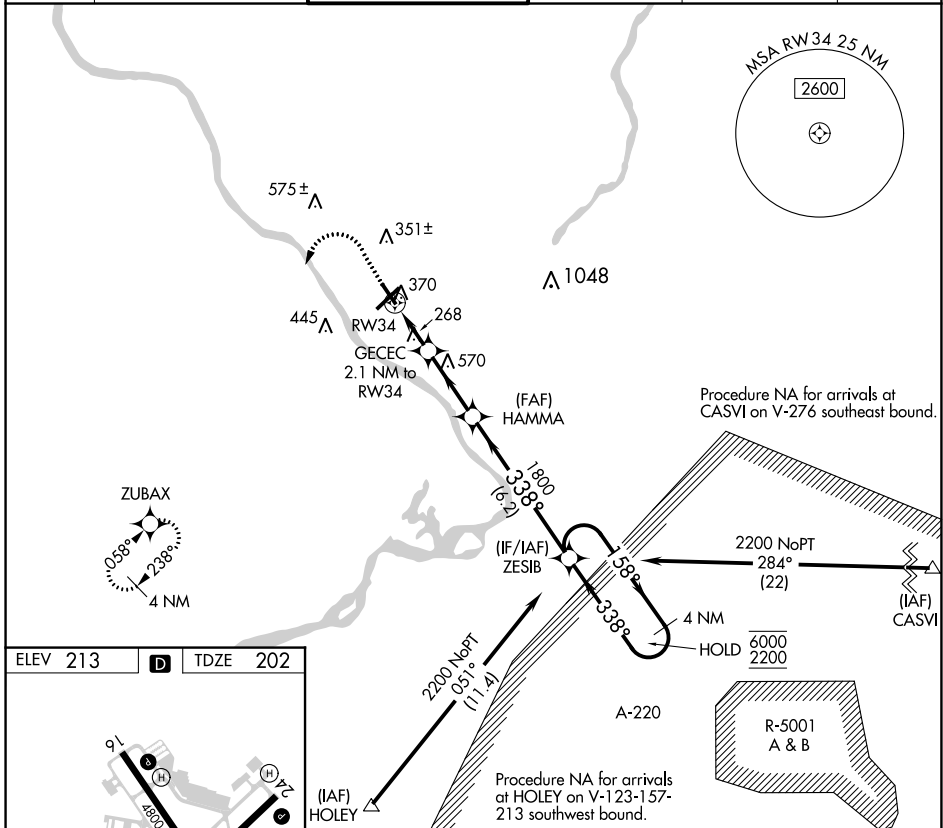
TRENTON MERCER (TTN)

RNP APCH.

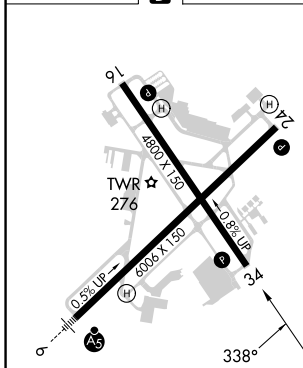
▼ Rwy 34 helicopter visibility reduction below 1 SM NA. Straight-in Rwy 34 at night, operational VGSi required, remain on or above VGSi glidepath until threshold. When Circling to Rwy 34 at night, operational VGSi required, remain on or above VGSi glidepath until threshold.

MISSED APPROACH:
(Do not exceed 250K until ZUBAX)
Climb to 700 then climbing left turn to 2700 direct ZUBAX and hold.

ATIS 126.775	PHILADELPHIA APP CON 123.8 291.7	TRENTON TOWER ★ 120.7 (CTAF) 0 257.8	GND CON 121.9 257.8	CLNC DEL 121.9 257.8	UNICOM 122.95
------------------------	--	--	-------------------------------	--------------------------------	-------------------------



ELEV 213	D	TDZE 202
----------	---	----------



700	2700	ZUBAX	HAMMA	ZESIB	4 NM Holding Pattern
		3.00° TCH 50			
		GECEC 2.1 NM to RW34			
		RW34			
		880		1800	
		2.1 NM		2.9 NM	
		6.2 NM			
		338°		158°	
		6000		2200	
		338°			

CATEGORY	A	B	C	D
LP MDA	520-1 318 (400-1)			
LNAV MDA	620-1	418 (500-1)	620-1 ³ / ₈	418 (500-1 ³ / ₈)
CIRCLING	680-1 467 (500-1)		760-1 ¹ / ₂	960-2 ¹ / ₂
			547 (600-1 ¹ / ₂)	747 (800-2 ¹ / ₂)

NE-2, 26 DEC 2024 to 23 JAN 2025

NE-2, 26 DEC 2024 to 23 JAN 2025