

APP CRS 239°	Rwy Idg 6006
	TDZE 193
	Apt Elev 212

RNAV (RNP) Y RWY 24

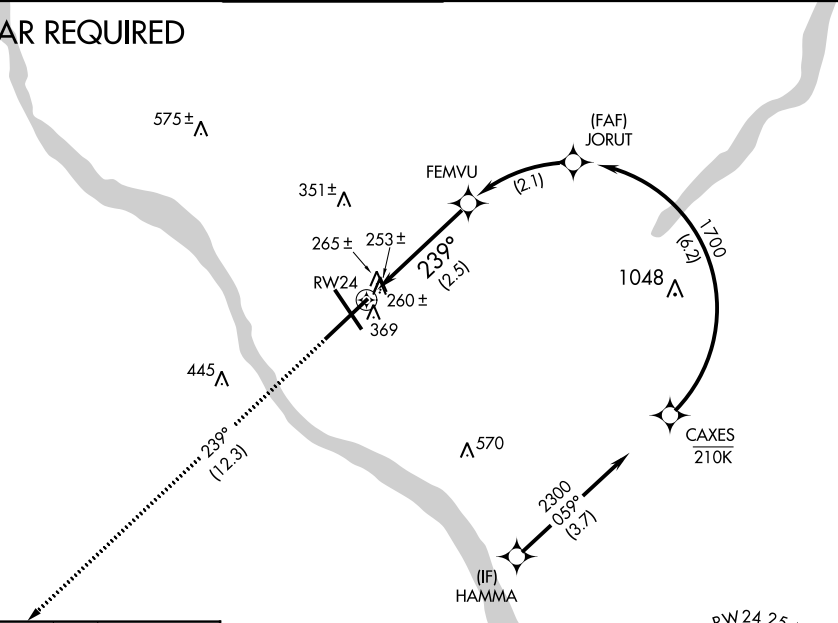
TRENTON MERCER (TTN)

▼ For uncompensated Baro-VNAV systems, procedure NA below -13°C (8°F) or above 54°C (130°F).
When VGSI inop, procedure NA at night.
RF required.
GPS required.

MISSED APPROACH: Climb to 2700 on track 239° to ZUBAX and hold.

ATIS 126.775	PHILADELPHIA APP CON 123.8 291.7	TRENTON TOWER ★ 120.7 (CTAF) 0 257.8	GND CON 121.9 257.8	CLNC DEL 121.9 257.8	UNICOM 122.95
------------------------	--	--	-------------------------------	--------------------------------	-------------------------

RADAR REQUIRED



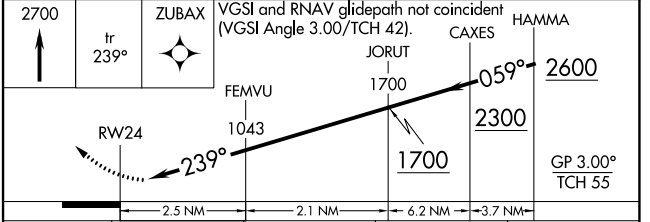
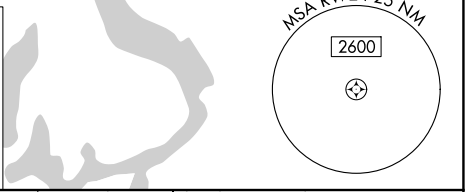
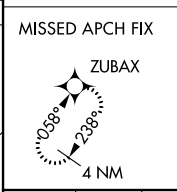
NE-2, 26 DEC 2024 to 23 JAN 2025

NE-2, 26 DEC 2024 to 23 JAN 2025

ELEV 212 TDZE 193

Diagram showing RWY 24 with taxiway layout. Taxiways include 9L, 9R, 1600X 150, 6000X 150, and 34. Approach angles are 239° and 059° UP.

HIRL Rwy 6-24 and 16-34
REIL Rwy 16, 24 and 34



CATEGORY	A	B	C	D
RNP 0.10 DA		641-1½	448 (500-1½)	
RNP 0.30 DA		741-1½	548 (600-1½)	

AUTHORIZATION REQUIRED