

ATHENS, GEORGIA

AL-983 (FAA)

24305

VOR/DME AHN 116.95 Chan 116 (Y)	APP CRS 014°	Rwy ldg 3995 TDZE 805 Apt Elev 813
---	------------------------	---

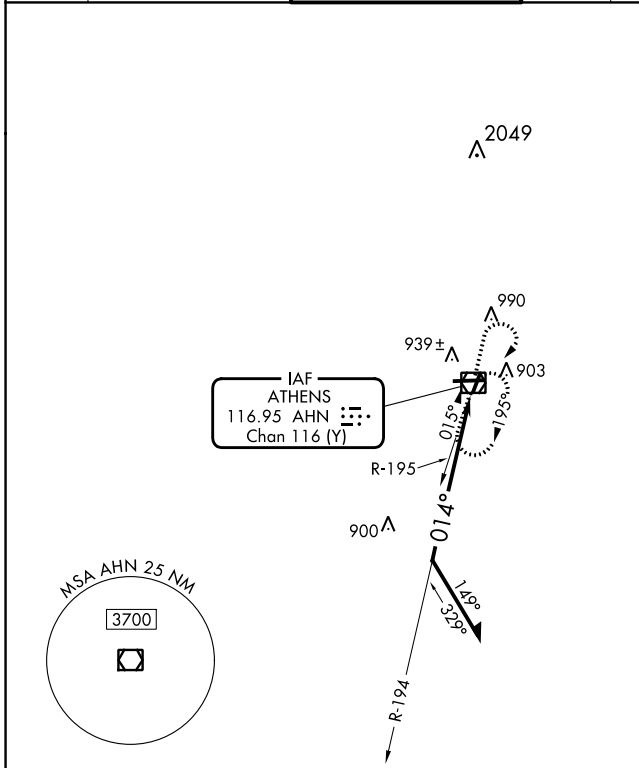
VOR RWY 2

ATHENS/BEN EPPS (AHN)

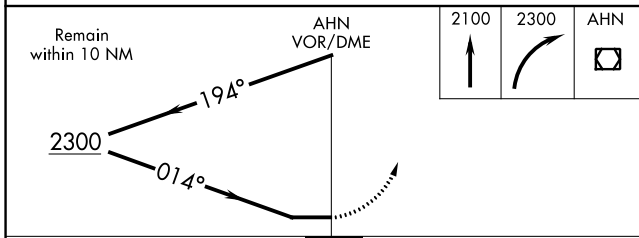
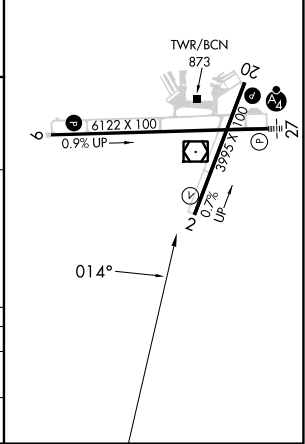
⚠ When VGSi inop, Circling Rwy 20 NA at night. When VGSi inop, Straight-in/Circling Rwy 2 procedure NA at night. Visibility reduction by helicopters NA. When local altimeter setting not received, use Winder altimeter setting and increase all MDA 60 feet; increase S-2 Cat D and Circling Cat D visibilities ¼ SM.

MISSED APPROACH: Climb to 2100 then climbing right turn to 2300 direct AHN VOR/DME and hold.

ASOS 132.875	ATLANTA APP CON * 132.475 291.1	ATHENS TOWER * 126.3 (CTAF) 0 338.275	GND CON 121.8	CLNC DEL 121.8	CLNC DEL 132.475 291.1 (when twr closed)	UNICOM 122.95
------------------------	---	--	-------------------------	--------------------------	---	-------------------------



ELEV 813	TDZE 805
MIRL Rwy 2-20	HIRL Rwys 9-27



CATEGORY	A	B	C	D
S-2	1220-1	415 (500-1)	1220-1¼	415 (500-1¼)
C CIRCLING	1260-1 447 (500-1)	1280-1 467 (500-1)	1320-1½ 507 (600-1½)	1460-2 647 (700-2)

ATHENS, GEORGIA
Amdt 11D 27FEB20

33°57'N-83°20'W

ATHENS/BEN EPPS (AHN) VOR RWY 2

SE-4, 26 DEC 2024 to 23 JAN 2025

SE-4, 26 DEC 2024 to 23 JAN 2025