

VOR/DME UJM 113.65 Chan 83 (Y)	APP CRS 013°	Rwy Idg 5001 TDZE 240 Apt Elev 242
--	------------------------	---

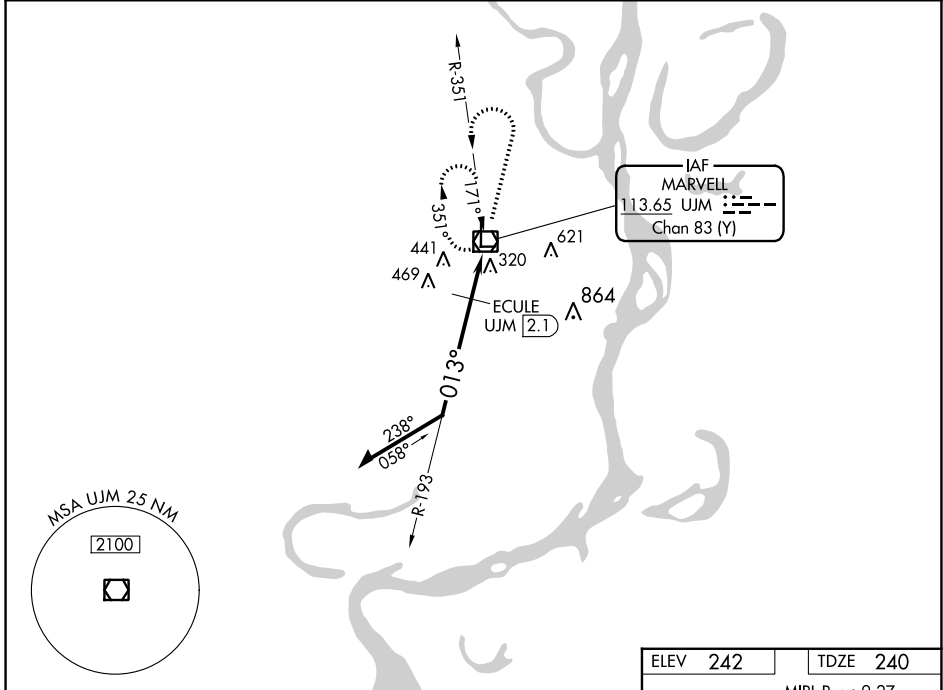
VOR RWY 36

THOMPSON-ROBBINS (HEE)

▼ Use Tunica altimeter setting.
▲ NA Circling Rwy 9, 27 NA at night.

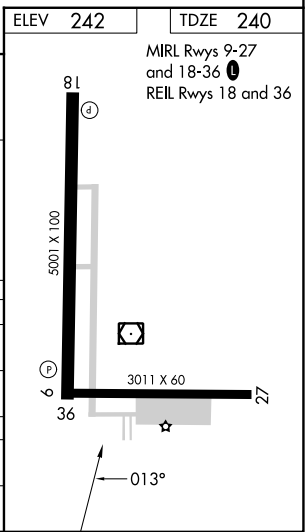
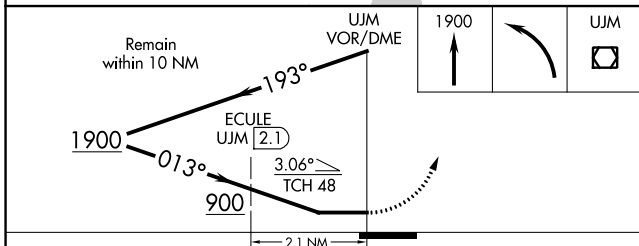
MISSED APPROACH: Climb to 1900 then left turn direct UJM VOR/DME and hold.

UTA AWOS-3 118.075	MEMPHIS CENTER 135.3 335.8	UNICOM 122.8 (CTAF) 0
------------------------------	--------------------------------------	--



SC-1, 26 DEC 2024 to 23 JAN 2025

SC-1, 26 DEC 2024 to 23 JAN 2025



CATEGORY	A	B	C	D
S-36	900-1	660 (700-1)	900-1 $\frac{7}{8}$	660 (700-1 $\frac{7}{8}$)
C CIRCLING	900-1	658 (700-1)	980-2 738 (800-2)	980-2 $\frac{1}{4}$ 738 (800-2 $\frac{1}{4}$)
ECULE FIX MINIMUMS				
S-36	700-1	460 (500-1)	700-1 $\frac{3}{8}$	460 (500-1 $\frac{3}{8}$)
C CIRCLING	840-1	598 (600-1)	980-2 738 (800-2)	980-2 $\frac{1}{4}$ 738 (800-2 $\frac{1}{4}$)