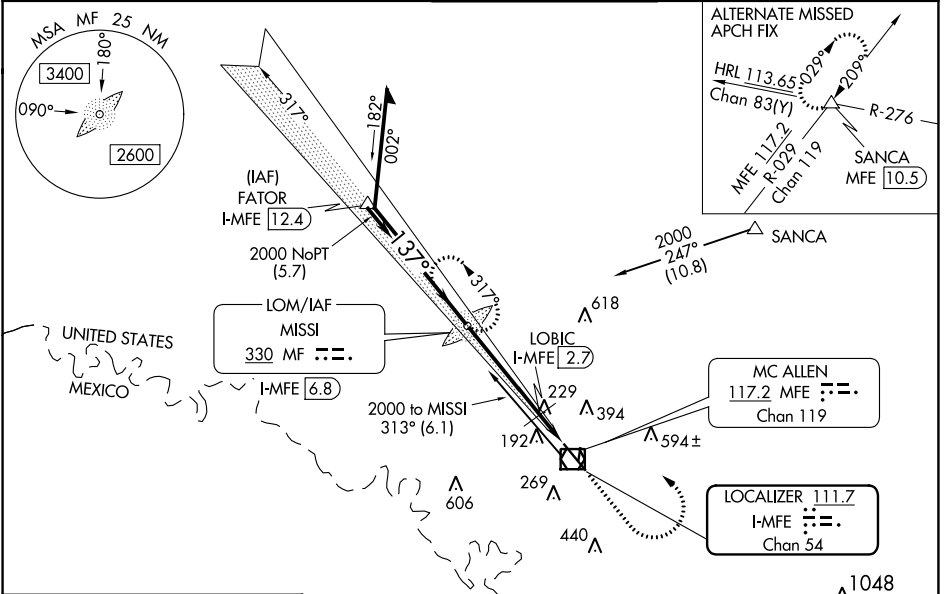


LOC/DME I-MFE 111.7 Chan 54	APP CRS 137°	Rwy Idg 6983 TDZE 107 Apt Elev 107
---	------------------------	---

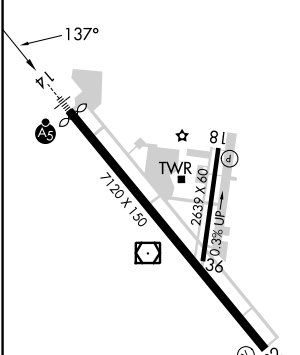
ILS or LOC RWY 14

MC ALLEN INTL (MF'E)

ADF required.		MALS R	MISSED APPROACH: Climb to 1500 then climbing left turn to 2000 direct to MISSI LOM and hold.	
ATIS 128.5	VALLEY APP CON 126.55 377.2	MC ALLEN TOWER ★ 118.5 (CTAF) 256.9	GND CON 121.8	UNICOM 122.95



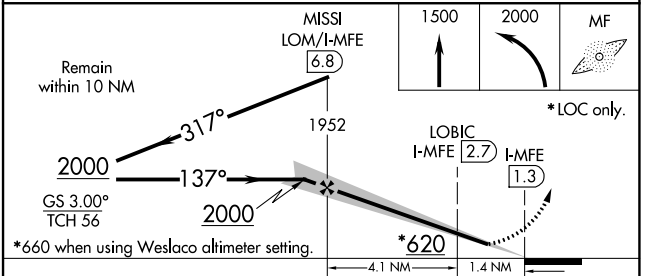
ELEV 107	D	TDZE 107
----------	----------	----------



REIL Rwy 32
HIRL Rwy 14-32
MIRL Rwy 18-36

FAF to MAP 5.5 NM

Knots	60	90	120	150	180
Min:Sec	5:30	3:40	2:45	2:12	1:50



CATEGORY	A	B	C	D
S-ILS 14	307-½ 200 (200-½)			
S-LOC 14	620-½	513 (600-½)	620-1	513 (600-1)
C CIRCLING	620-1	513 (600-1)	620-1½ 513 (600-1½)	800-2¼ 693 (700-2¼)
LOBIC FIX MINIMUMS				
S-LOC 14	540-½	433 (500-½)	540-¾	433 (500-¾)
C CIRCLING	580-1	473 (500-1)	580-1½ 473 (500-1½)	800-2¼ 693 (700-2¼)

SC-3, 26 DEC 2024 to 23 JAN 2025

SC-3, 26 DEC 2024 to 23 JAN 2025