

LOC/DME I-LLM 111.7 Chan 54	APP CRS 317°	Rwy Idg 7120 TDZE 102 Apt Elev 107
---	------------------------	---

ILS or LOC RWY 32

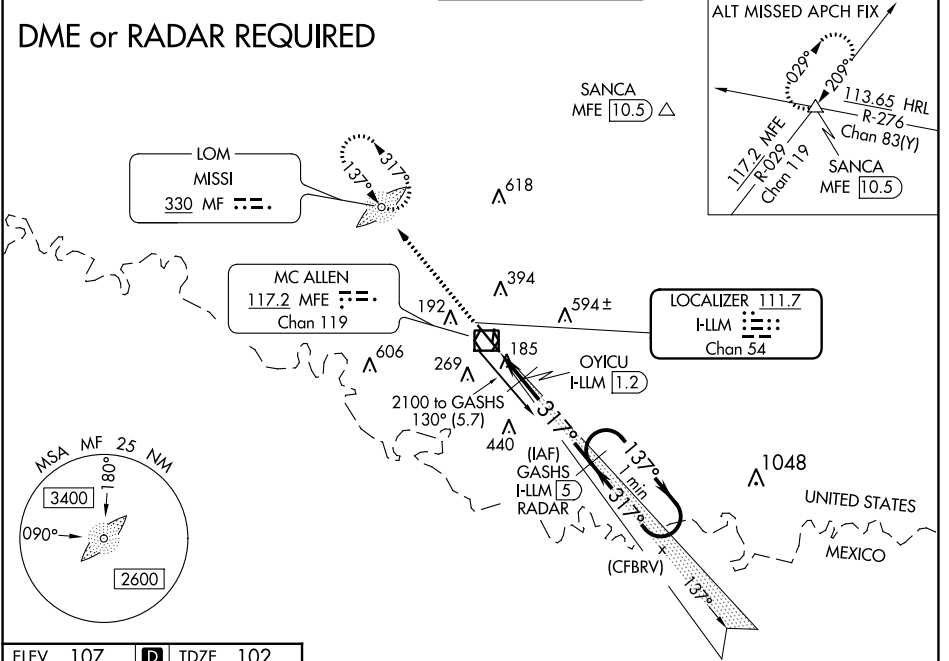
MC ALLEN INTL (MF'E)

⚠ Circling NA northeast of Rwy 14-32. ADF and DME or Radar required. When local altimeter setting not received, use Weslaco altimeter setting: increase all DA 39 feet and MDA 40 feet.

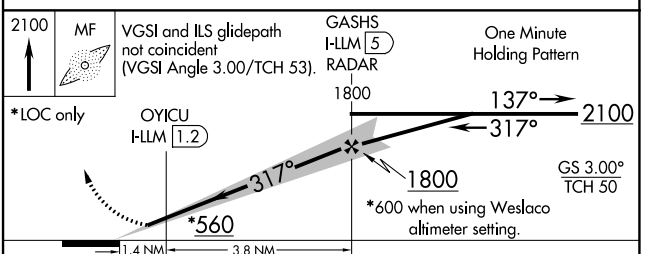
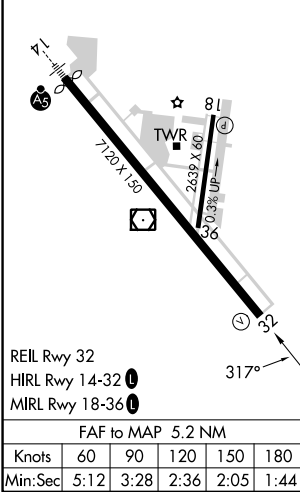
MISSED APPROACH: Climb to 2100 direct MF LOM and hold

ATIS 128.5	VALLEY APP CON 126.55 377.2	MC ALLEN TOWER ★ 118.5 (CTAF) 0 256.9	GND CON 121.8	UNICOM 122.95
----------------------	---------------------------------------	---	-------------------------	-------------------------

DME or RADAR REQUIRED



ELEV 107	D	TDZE 102
----------	----------	----------



CATEGORY	A	B	C	D
S-ILS 32	302-3/4		200 (200-3/4)	
S-LOC 32	560-1	458 (500-1)	560-1 3/8	458 (500-1 1/8)
C CIRCLING	580-1	473 (500-1)	580-1 1/2	800-2 1/4 693 (700-2 1/4)
OYICU FIX MINIMUMS				
S-LOC 32	440-1		338 (400-1)	
C CIRCLING	580-1	473 (500-1)	580-1 1/2	800-2 1/4 693 (700-2 1/4)