

VOR/DME MFE 117.2 Chan 119	APP CRS 134°	Rwy Idg 6983 TDZE 107 Apt Elev 107
--	------------------------	---

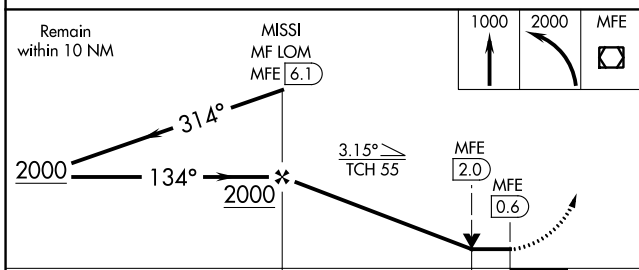
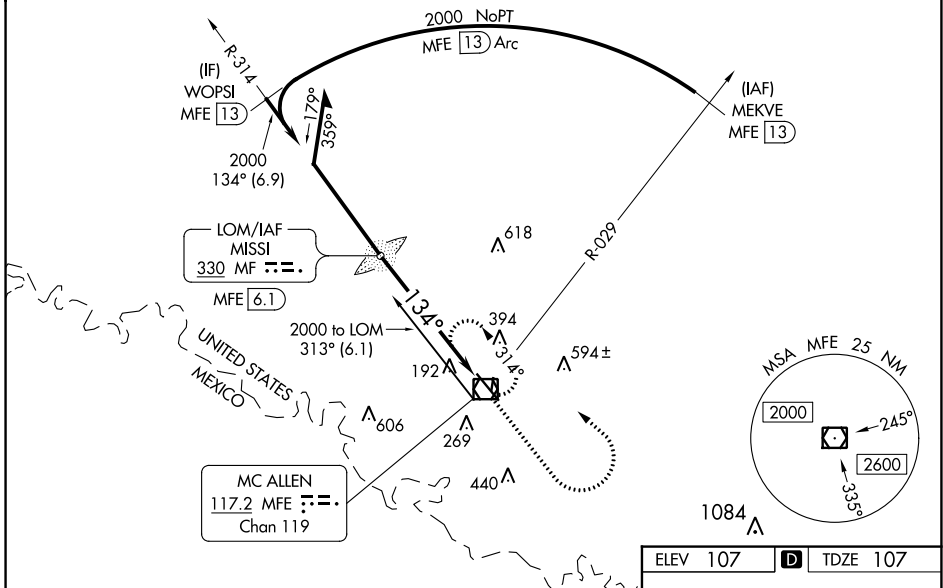
VOR RWY 14

MC ALLEN INTL (MFE)

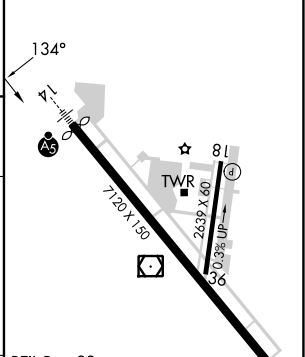
<p>⚠ Circling NA northeast of Rwy 14-32. ADF or DME required. For nop MALSR, increase S-14 Cat C/D visibility to 1 1/8 mile. When local altimeter setting not received, use Weslaco altimeter setting and increase all MDA 40 feet and S-14 Cat C/D and Circling Cat C visibility 1/8 mile. VDP NA when using Weslaco altimeter setting.</p>	<p>MALSR</p>	<p>MISSED APPROACH: Climb to 1000 then climbing left turn to 2000 direct MFE VOR/DME and hold.</p>
---	--------------	--

ATIS 128.5	VALLEY APP CON 126.55 377.2	MC ALLEN TOWER ★ 118.5 (CTAF) 256.9	GND CON 121.8	UNICOM 122.95
----------------------	---------------------------------------	---	-------------------------	-------------------------

ADF or DME REQUIRED



ELEV 107	D	TDZE 107
----------	----------	----------



CATEGORY	A	B	C	D
S-14	620-1/2	513 (600-1/2)	620-1	513 (600-1)
C CIRCLING	620-1	513 (600-1)	620-1 1/2	800-2 1/4
			513 (600-1/2)	693 (700-2 1/4)

FAF to MAP 5.5 NM					
Knots	60	90	120	150	180
Min:Sec	5:30	3:40	2:45	2:12	1:50

SC-3, 26 DEC 2024 to 23 JAN 2025

SC-3, 26 DEC 2024 to 23 JAN 2025