

LOC/DME I-MVP 111.55 Chan 52 (Y)	APP CRS 196°	Rwy ldg 7302 TDZE 1320 Apt Elev 1333
---	------------------------	---

ILS or LOC RWY 19L

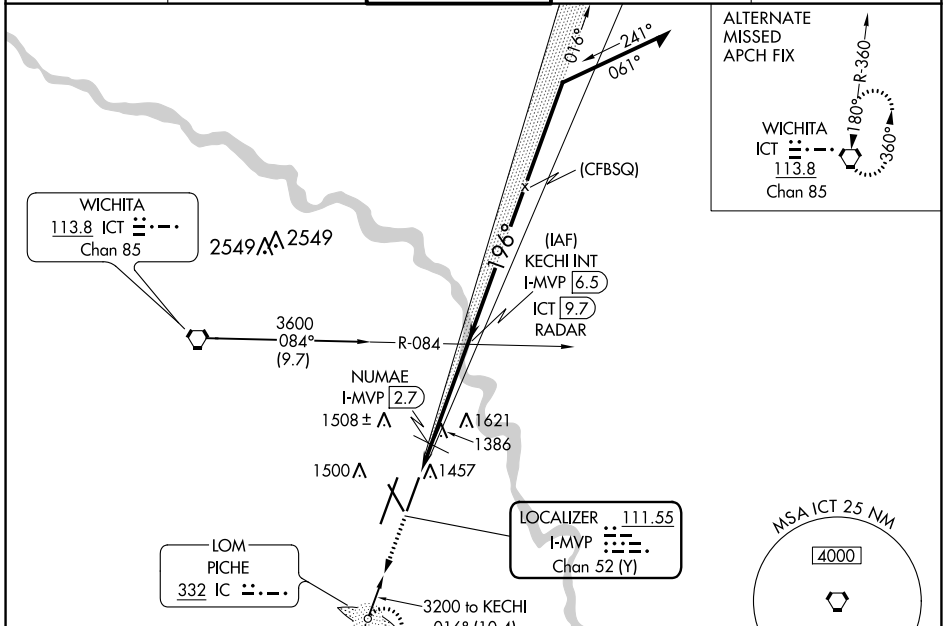
WICHITA DWIGHT D EISENHOWER NTL (ICT)

⚠ ADF required. Simultaneous approach authorized with ILS or LOC RWY 19R. For inoperative MALSRL, increase S-ILS 19L Cat E visibility to 3/4 mile, S-LOC 19L Cat E visibility to 1 1/8 mile, NUMAE fix minimums: S-LOC 19L Cat C/D/E visibility to 1 mile.

MALSRL

MISSED APPROACH: Climb to 3000 direct PICHE LOM and hold.

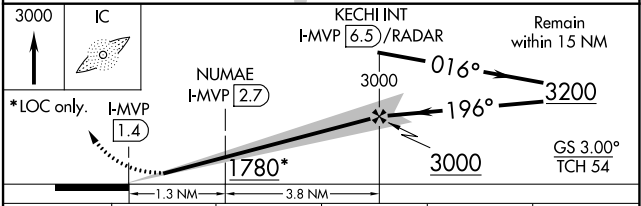
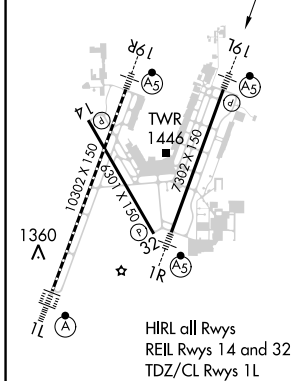
ATIS 125.15	WICHITA APP CON 126.7 353.5	WICHITA TOWER 118.2 257.8	GND CON 121.9 348.6	CLNC DEL 125.7
-----------------------	---------------------------------------	-------------------------------------	-------------------------------	--------------------------



ALTERNATE MISSED APCH FIX

WICHITA ICT
113.8
Chan 85

ELEV 1333	D	TDZE 1320
-----------	----------	-----------



CATEGORY	A	B	C	D	E
S-ILS 19L	1520-1/2 200 (200-1/2)				
S-LOC 19L	1780-1/2	460 (500-1/2)	1780-7/8 460 (500-7/8)		
<input checked="" type="checkbox"/> CIRCLING	1800-1	467 (500-1)	1980-1 3/4 647 (700-1 3/4)	1980-2 647 (700-2)	2000-2 1/4 667 (700-2 1/4)
NUMAE FIX MINIMUMS (DME REQUIRED)					
S-LOC 19L	1700-1/2	380 (400-1/2)	1700-5/8 380 (400-5/8)		
<input checked="" type="checkbox"/> CIRCLING	1800-1	467 (500-1)	1980-1 3/4 647 (700-1 3/4)	1980-2 647 (700-2)	2000-2 1/4 667 (700-2 1/4)

FAF to MAP 5.1 NM					
Knots	60	90	120	150	180
Min:Sec	5:06	3:24	2:33	2:02	1:42

NC-2, 26 DEC 2024 to 23 JAN 2025

NC-2, 26 DEC 2024 to 23 JAN 2025