

LOC I-HOV 110.5	APP CRS 196°	Rwy Idg 10302 TDZE 1330 Apt Elev 1333
---------------------------	------------------------	--

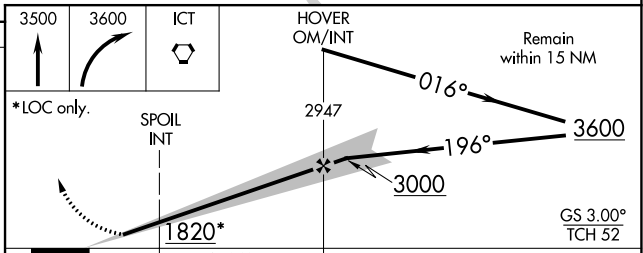
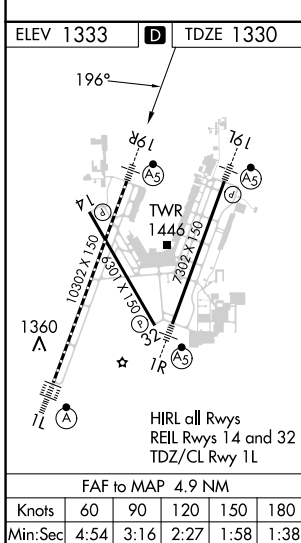
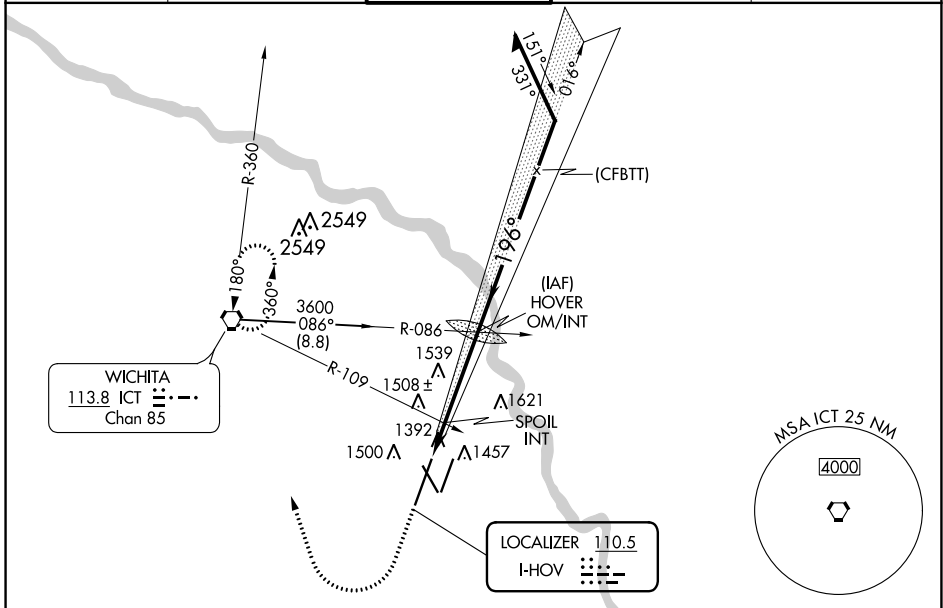
ILS or LOC RWY 19R

WICHITA DWIGHT D EISENHOWER NTL (ICT)

Simultaneous approach authorized with Rwy 19L. For inoperative MALSR, increase S-ILS 19R# Cat E visibility to RVR 4000, S-LOC 19R Cat E visibility to 1/2 mile, SPOIL FIX minimums: S-LOC 19R Cat D and E visibility to RVR 5000.
RVR 1800 authorized with the use of FD or AP or HUD to DA.

MALSR
 MISSED APPROACH: Climb to 3500 then climbing right turn to 3600 direct ICT VORTAC and hold.

ATIS 125.15	WICHITA APP CON 126.7 353.5	WICHITA TOWER 118.2 257.8	GND CON 121.9 348.6	CLNC DEL 125.7
-----------------------	---------------------------------------	-------------------------------------	-------------------------------	--------------------------



ELEV 1333	D	TDZE 1330	3500	3600	ICT	HOVER OM/INT	Remain within 15 NM	
LOC only.		SPOIL INT	1820	3000	196°	3600	016°	
CATEGORY		A	B	C	D	E		
S-ILS 19R#		1530/24 200 (200-1/2)						
S-LOC 19R		1820/24 490 (500-1/2)	1820/40 490 (500-3/4)	1820/50 490 (500-1)	1820/60 490 (500-1 1/4)			
CIRCLING		1820-1 487 (500-1)	1980-1 3/4 647 (700-1 3/4)	1980-2 647 (700-2)	2000-2 1/4 667 (700-2 1/4)			
SPOIL FIX MINIMUMS (DUAL VOR RECEIVERS REQUIRED)								
S-LOC 19R		1660/24 330 (400-1/2)		1660/40 330 (400-3/4)				
CIRCLING		1800-1 467 (500-1)	1980-1 3/4 647 (700-1 3/4)	1980-2 647 (700-2)	2000-2 1/4 667 (700-2 1/4)			

WICHITA, KANSAS
Amdt 5H 30DEC21

WICHITA DWIGHT D EISENHOWER NTL (ICT)
37°39'N-97°26'W
ILS or LOC RWY 19R

NC-2, 26 DEC 2024 to 23 JAN 2025

NC-2, 26 DEC 2024 to 23 JAN 2025