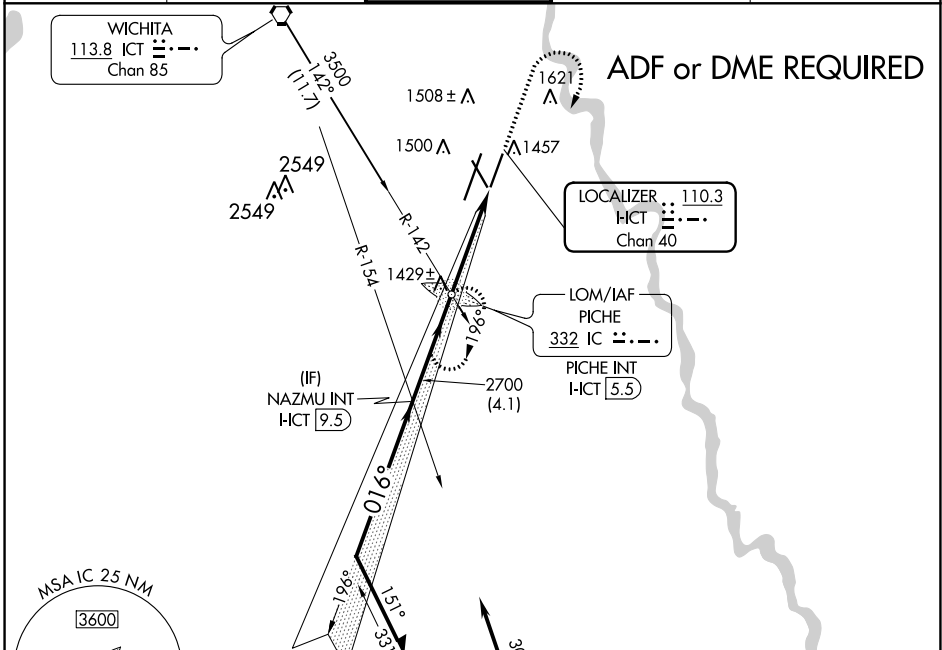


LOC/DME HCT 110.3 Chan 40	APP CRS 016°	Rwy Idg TDZE Apt Elev 7302 1321 1333
--	------------------------	--

ILS or LOC RWY 1R
WICHITA DWIGHT D EISENHOWER NTL (ICT)

<p>⚠ Simultaneous approach authorized with Rwy 1L. ADF or DME required. #RVR 1800 authorized with the use of FD or AP or HUD to DA.</p>	<p>MALSR </p>	<p>MISSED APPROACH: Climb to 3600 then right turn direct PICHE LOM/INT/HCT 5.5 DME and hold.</p>
--	--------------------	--

<p>ATIS 125.15</p>	<p>WICHITA APP CON 126.7 353.5</p>	<p>WICHITA TOWER 118.2 257.8</p>	<p>GND CON 121.9 348.6</p>	<p>CLNC DEL 125.7</p>
-------------------------------	---	---	---------------------------------------	----------------------------------



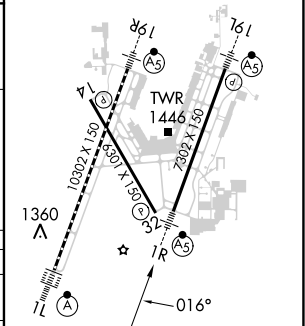
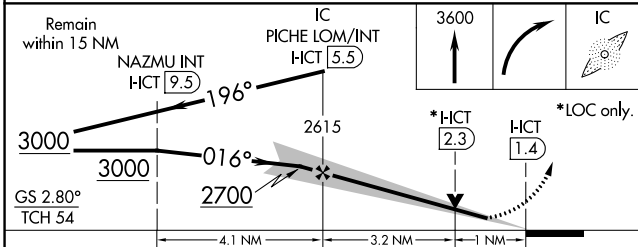
NC-2, 26 DEC 2024 to 23 JAN 2025

NC-2, 26 DEC 2024 to 23 JAN 2025



ELEV 1333	D	TDZE 1321
-----------	----------	-----------

HIRL all Rwys
REIL Rwys 14 and 32
TDZ/CL Rwy 1L



Remain within 15 NM	NAZMU INT HCT 9.5	PICHE LOM/INT HCT 5.5	3600	IC	
GS 2.80° TCH 54	3000	2700	*HCT 2.3	HCT 1.4 *LOC only.	
	4.1 NM	3.2 NM	1 NM		
CATEGORY	A	B	C	D	E
S-ILS 1R#	1521/24 200 (200-½)				
S-LOC 1R	1680/24	359 (400-½)	1680/40	359 (400-¾)	
CIRCLING	1800-1	467 (500-1)	1980-1¾ 647 (700-1¾)	1980-2 647 (700-2)	2000-2½ 667 (700-2½)

FAF to MAP 4.1 NM					
Knots	60	90	120	150	180
Min:Sec	4:06	2:44	2:03	1:38	1:22