

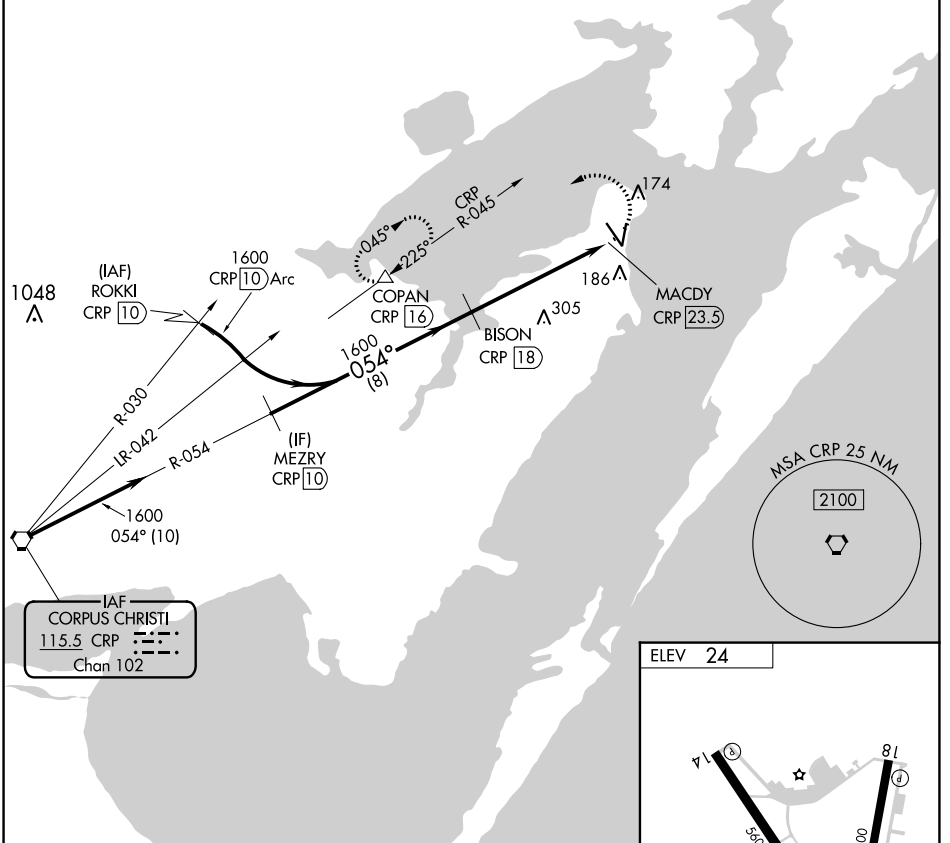
VORTAC CRP <b>115.5</b> Chan <b>102</b>	APP CRS <b>054°</b>	Rwy Idg TDZE Apt Elev	<b>N/A</b> <b>N/A</b> <b>24</b>
---	------------------------	-----------------------------	---------------------------------------

# VOR or TACAN-A

ARANSAS COUNTY (RKP)

DME required.		MISSED APPROACH: Climbing left turn to 1600 on heading 360° and CRP VORTAC R-045 to COPAN/16 DME and hold.	
---------------	--	--	--

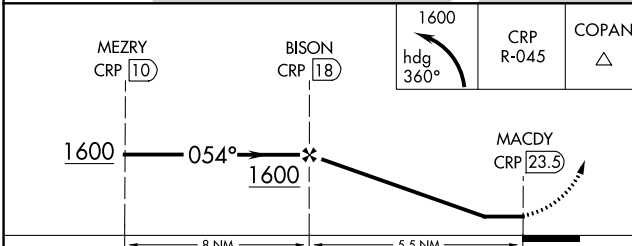
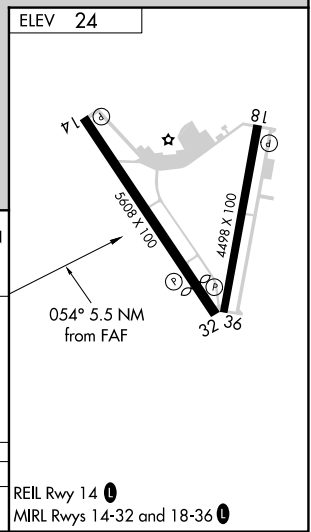
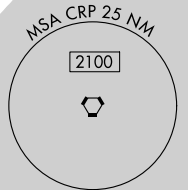
ASOS <b>119.275</b>	CORPUS APP CON <b>120.9 348.725</b>	CLNC DEL <b>121.7</b>	UNICOM <b>123.05</b> (CTAF) <b>1</b>
------------------------	--	--------------------------	---



SC-3, 26 DEC 2024 to 23 JAN 2025

SC-3, 26 DEC 2024 to 23 JAN 2025

IAF  
CORPUS CHRISTI  
115.5 CRP  
Chan 102



CATEGORY	A	B	C	D
CIRCLING	800-1 776 (800-1)	800-1¼ 776 (800-1¼)	800-2¼ 776 (800-2¼)	NA

REIL Rwy 14 **1**  
MIRL Rwy 14-32 and 18-36 **1**