

WAAS CH 86305 W22A	APP CRS 224°	Rwy Idg TDZE Apt Elev	5200 83 83
----------------------------------------	------------------------	-----------------------------	---------------------------------------

RNAV (GPS) RWY 22

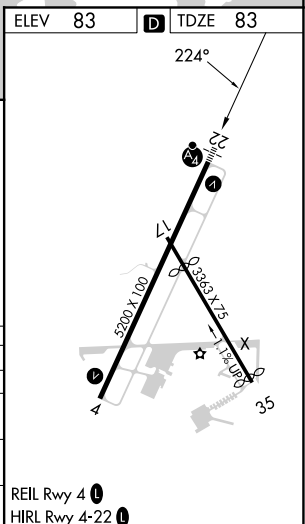
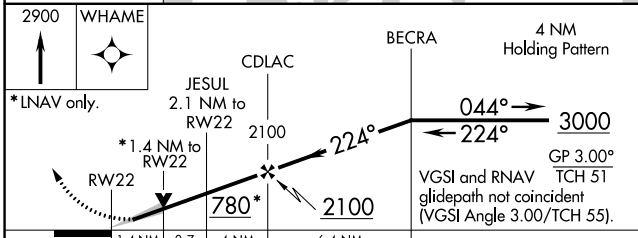
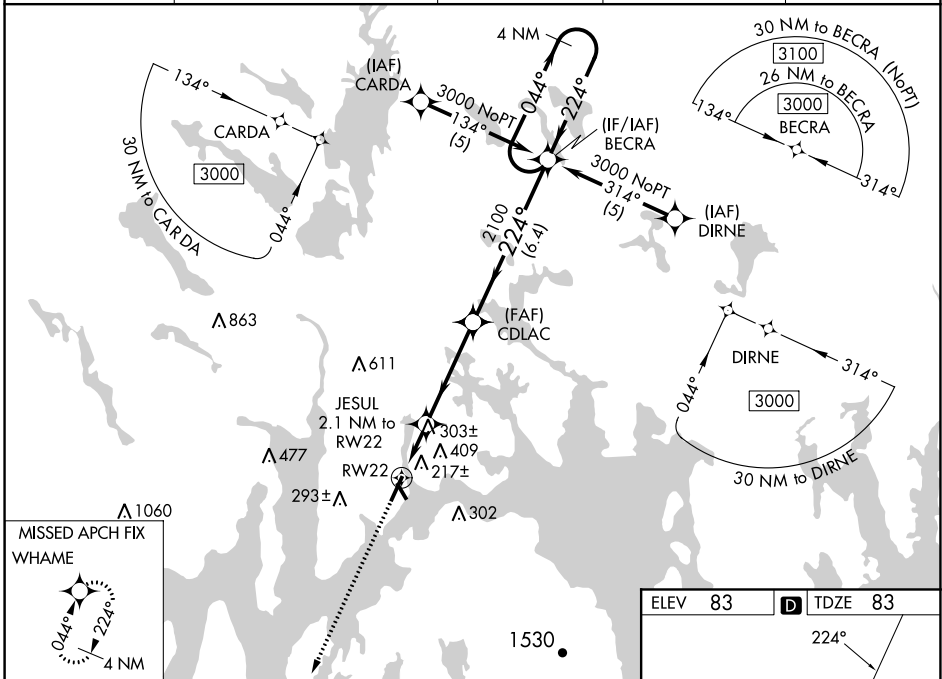
HANCOCK COUNTY/BAR HARBOR (BHB)

RNP APCH - GPS.

⚠ Baro-VNAV NA when using Bangor altimeter setting. When local altimeter setting not received, use Bangor altimeter setting and increase LPV DA to 366 feet; increase LNAV/VNAV DA to 780 feet and all visibilities ¼ SM. Increase all MDAs 100 feet and LNAV visibility Cats C/D, and Circling visibility Cats C/D ¼ SM. When using Bangor altimeter setting, inop table does not apply to LNAV/VNAV all Cats and LNAV Cat C. For uncompensated Baro-VNAV systems, LNAV/VNAV NA below -15°C or above 49°C. Circling Rwy 17, 35 NA at night.

MALSIF
MISSED APPROACH:
Climb to 2900 direct
WHAME and hold.

AWOS-3PT 118.35	BANGOR APP CON 133.6 284.65	CLNC DEL 119.9	UNICOM 123.0 (CTAF)
			122.7 0



CATEGORY	A	B	C	D
LPV DA		283-¾	200 (200-¾)	
LNAV/VNAV DA		697-1½	614 (700-1½)	
LNAV MDA	580-¾ 497 (500-¾)	580-1¼ 497 (500-1¼)	580-1½ 497 (500-1½)	
CIRCLING	600-1 517 (600-1)	720-1 637 (700-1)	720-1¾ 637 (700-1¾)	840-2½ 757 (800-2½)