

WAAS CH <b>40210</b> <b>W03A</b>	APP CRS <b>031°</b>	Rwy Idg TDZE Apt Elev	<b>4000</b> <b>54</b> <b>55</b>
--	------------------------	-----------------------------	---------------------------------------

# RNAV (GPS) RWY 3

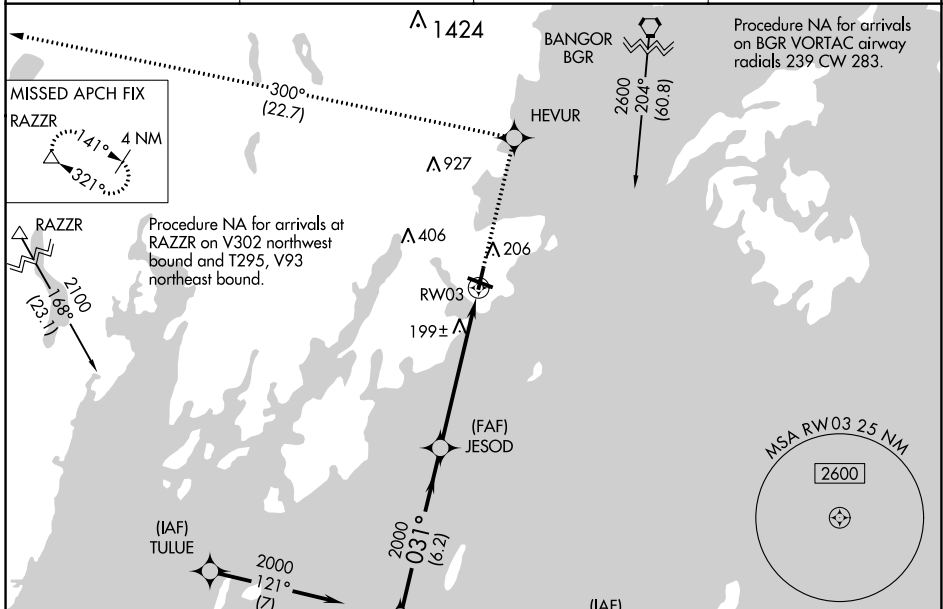
KNOX COUNTY RGNL (R.KD)

RNP APCH.

**⚠** Rwy 3 helicopter visibility reduction below 3/4 SM NA.  
For uncompensated Baro-VNAV systems,  
LNAV/VNAV NA below -15°C or above 54°C.

MISSED APPROACH: Climb to 3000 direct HEVUR and on track 300° to RAZZR and hold.

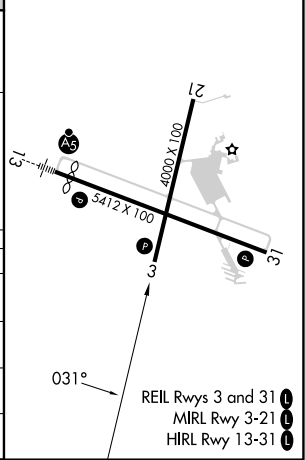
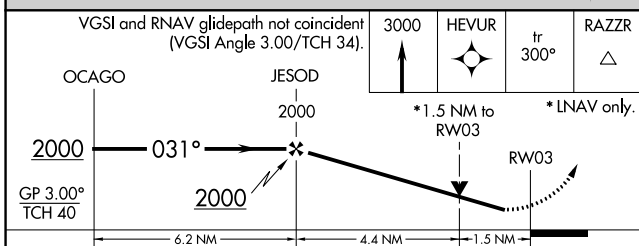
AWOS-3PT <b>119.025</b>	PORTLAND APP CON ★ <b>120.4 299.2</b>	CLNC DEL <b>123.8</b>	UNICOM <b>123.05</b> (CTAF) <b>📻</b>
----------------------------	--	--------------------------	---



NE-1, 26 DEC 2024 to 23 JAN 2025

NE-1, 26 DEC 2024 to 23 JAN 2025

ELEV 55	<b>D</b>	TDZE 54
---------	----------	---------



CATEGORY	A	B	C	D
LPV DA	374-1 1/4 320 (400-1 1/4)			
LNAV/VNAV DA	459-1 1/2 405 (500-1 1/2)			
LNAV MDA	560-1 506 (600-1)	560-1 3/8 506 (600-1 3/8)	560-1 1/2 506 (600-1 1/2)	
<b>C</b> CIRCLING	600-1 545 (600-1)	720-1 3/4 665 (700-1 3/4)	1140-3 1085 (1100-3)	

- REIL Rwys 3 and 31 **📻**
- MIRL Rwy 3-21 **📻**
- HIRL Rwy 13-31 **📻**