

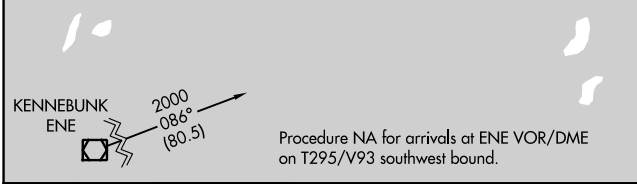
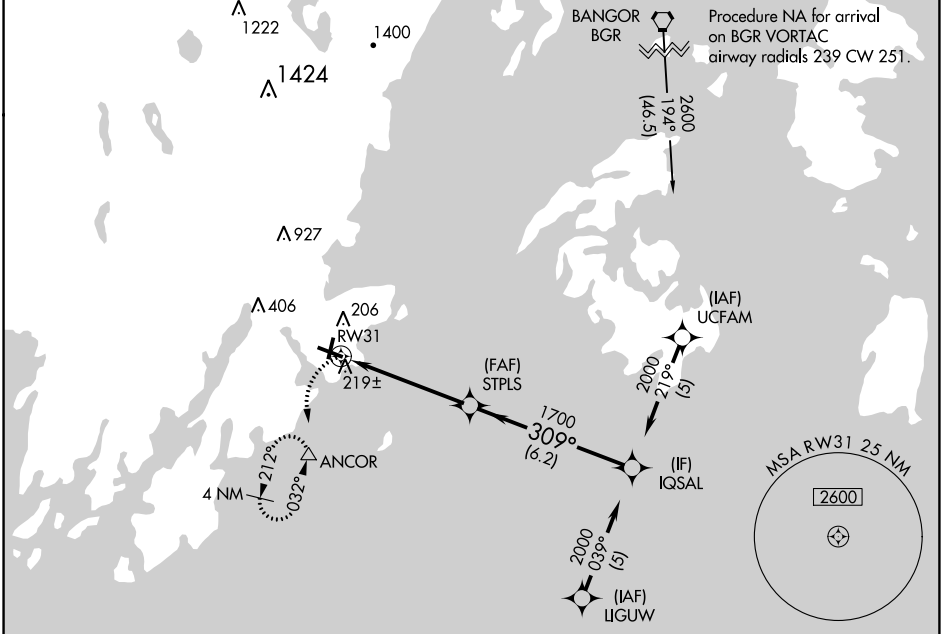
APP CRS	Rwy Idg	5412
309°	TDZE	55
	Apt Elev	55

RNAV (GPS) RWY 31

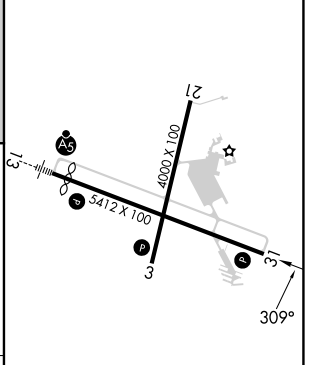
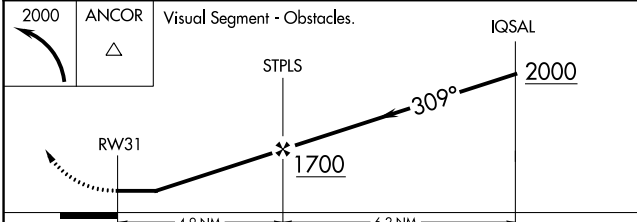
KNOX COUNTY RGNL (R.KD)

RNP APCH.	MISSED APPROACH: Climbing left turn to 2000 direct ANCOR and hold, continue climb-in-hold to 2000.
Rwy 31 helicopter visibility reduction below 3/4 SM NA.	

AWOS-3PT 119.025	PORTLAND APP CON ★ 120.4 299.2	CLNC DEL 123.8	UNICOM 123.05 (CTAF)
----------------------------	--	--------------------------	--------------------------------



ELEV 55		TDZE 55
---------	--	---------



CATEGORY	A	B	C	D
LNVA MDA	480-1	425 (500-1)	480-1 1/4	425 (500-1 1/4)
CIRCLING	580-1	525 (600-1)	720-1 3/4	1140-3
			665 (700-1 3/4)	1085 (1100-3)

- REIL Rwy 3 and 31
- MIRL Rwy 3-21
- HIRL Rwy 13-31

NE-1, 26 DEC 2024 to 23 JAN 2025

NE-1, 26 DEC 2024 to 23 JAN 2025