


LOC I-AYS 108.3	APP CRS 184°	Rwy Idg 5992 TDZE 140 Apt Elev 141
---------------------------	------------------------	---

ILS Y or LOC Y RWY 19

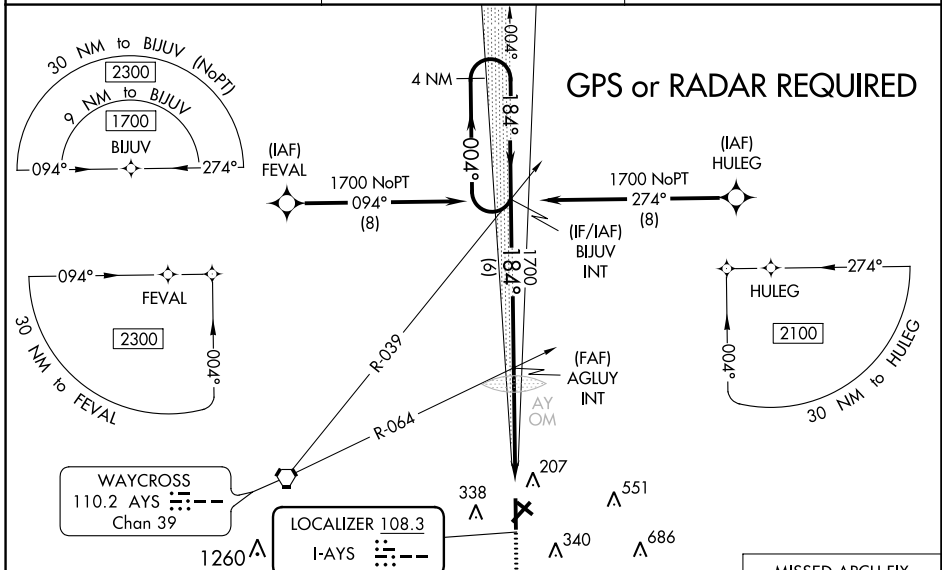
WAYCROSS-WARE COUNTY (AYS)

GPS required. When local altimeter setting not received, use Alma altimeter setting: increase DA to 390 feet and all MDA 60 feet; increase S-LOC 19 Cat C/D visibility 1/8 mile; increase Circling Cat C/D visibility 1/4 mile. For inop MALSRS when using Alma altimeter setting, increase S-LOC 19 Cat C/D visibility to 1 1/8 mile. Night landing Rwy 5, 31 NA.

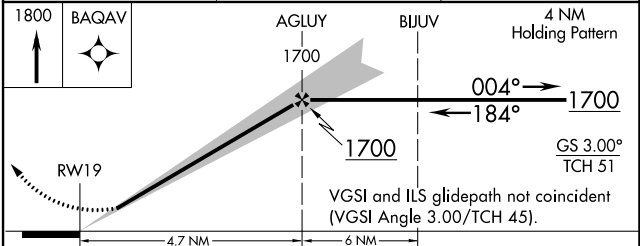
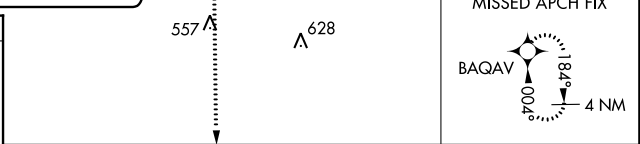
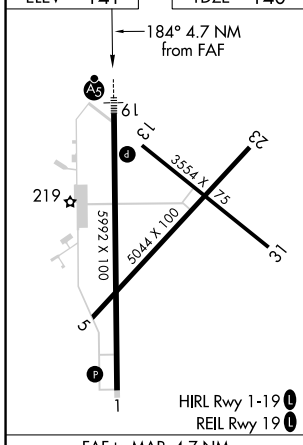
MALSRS 

MISSED APPROACH: Climb to 1800 direct BAQAV and hold.

AWOS-3 118.575	JACKSONVILLE CENTER 127.575 269.025	UNICOM 122.8 (CTAF)
--------------------------	---	-------------------------------



ELEV 141	TDZE 140
-----------------	-----------------



CATEGORY	A	B	C	D
S-ILS 19		340-1/2	200 (200-1/2)	
S-LOC 19	600-1/2	460 (500-1/2)	600-7/8	460 (500-7/8)
CIRCLING	660-1 519 (600-1)	720-1 579 (600-1)	860-2 719 (800-2)	860-2 1/4 719 (800-2 1/4)

SE-4, 26 DEC 2024 to 23 JAN 2025

SE-4, 26 DEC 2024 to 23 JAN 2025