

WAAS CH 87027 W32A	APP CRS 322°	Rwy Idg 3510 TDZE 545 Apt Elev 556
--	------------------------	---

RNAV (GPS) RWY 32

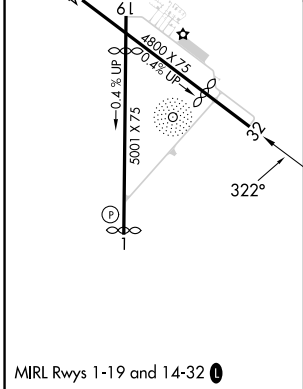
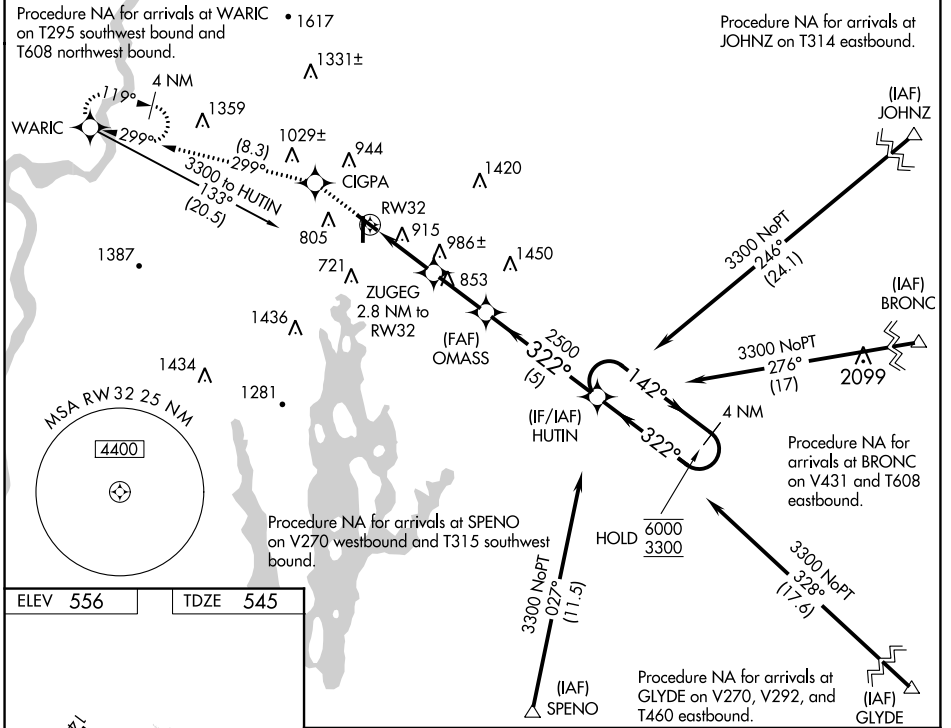
ORANGE MUNI (O.R.E.)

RNP APCH - GPS.

▼ For uncompensated Baro-VNAV systems, LNAV/VNAV NA below -16°C or above 54°C.
 Rwy 32 helicopter visibility reduction below ¾ SM NA. Circling Rwy 1, 19 NA at night.
 ▲ Baro-VNAV and VDP NA when using Keene altimeter setting. When local altimeter setting not received, use Keene altimeter setting and increase LPV DA to 928 and all visibilities ½ SM, LNAV/VNAV DA to 1343 and all visibilities ½ SM, and all MDAs 60 feet and LNAV visibility Cat B ¼ SM, and Circling visibility Cat B ¼ SM.

MISSED APPROACH: Climb to 3500 direct CIGPA and on track 299° to WARIC and hold, continue climb-in-hold to 3500.

ASOS 135.675	BOSTON CENTER 123.75 338.2	UNICOM 122.8 (CTAF) 0
-------------------------------	---	--



3500	CIGPA	WARIC	HUTIN	4 NM Holding Pattern
↑	tr 299°			
	ZUGEG 2.8 NM to RW32	OMASS 2500	HUTIN	142° → 6000 ← 322° 3300
	1.7 NM to RW32			GP 3.50° TCH 45
	1.7 NM	1.1 NM	2.3 NM	5 NM
CATEGORY	A	B	C	D
LPV DA	873-1	328 (400-1)		NA
LNAV/VNAV DA	1288-2	743 (800-2)		NA
LNAV MDA	1240-1	695 (700-1)		NA
CIRCLING	1260-1 704 (800-1)	1320-1 764 (800-1)		NA

NE-1, 26 DEC 2024 to 23 JAN 2025

NE-1, 26 DEC 2024 to 23 JAN 2025