

WAAS CH 40009 W24A	APP CRS 236°	Rwy Idg TDZE Apt Elev	9002 66 66
--	------------------------	-----------------------------	---------------------------------------

RNAV (GPS) RWY 24

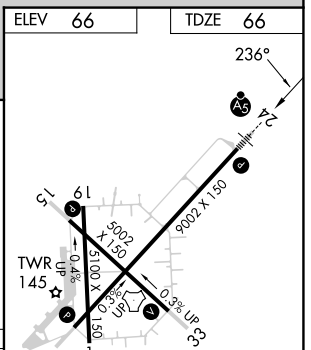
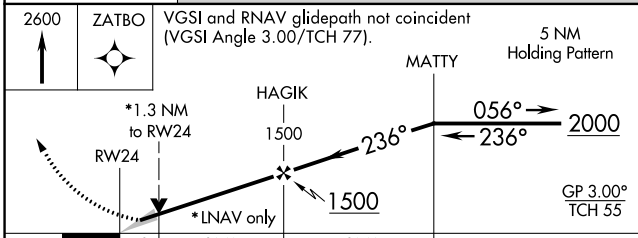
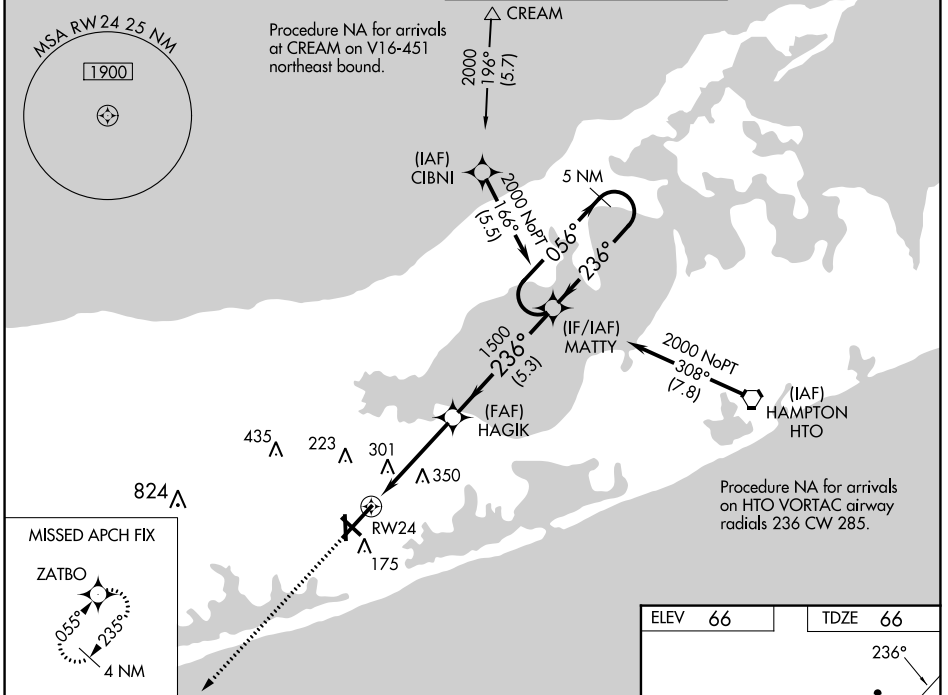
FRANCIS S GABRESKI (F0K)

⚠ For uncompensated Baro-VNAV systems, LNAV/VNAV NA below -15°C (5°F) or above 43°C (109°F). DME/DME RNP-0.3 NA. When local altimeter setting not received, use Shirley altimeter setting: increase LPV DA to 293 feet; increase LNAV/VNAV DA to 632 feet and all Cats visibility 1/8 SM; increase all MDAs 40 feet and Circling Cat C visibility 1/4 SM. Baro-VNAV and VDP NA when using Shirley altimeter setting. Circling Rwy 15 NA at night.

MALSR

MISSED APPROACH:
Climb to 2600 direct ZATBO and hold.

ASOS 119.925	NEW YORK APP CON 125.975 343.65	SUFFOLK COUNTY TOWER ★ 125.3 (CTAF) 0 236.6	GND CON 121.8 225.4
------------------------	---	---	-------------------------------



CATEGORY	A	B	C	D
LPV DA		266-1/2	200 (200-1/2)	
LNAV/VNAV DA		605-1 3/8	539 (600-1 3/8)	
LNAV MDA	560-1/2 494 (500-1/2)		560-1 494 (500-1)	
CIRCLING	600-1 534 (600-1)	620-1 554 (600-1)	700-1 3/4 634 (700-1 3/4)	740-2 1/4 674 (700-2 1/4)

HIRL Rwy 6-24 **0**

MIRL Rwy 15-33 **0**

REIL Rwy 6, 15, and 33 **0**

NE-2, 26 DEC 2024 to 23 JAN 2025

NE-2, 26 DEC 2024 to 23 JAN 2025