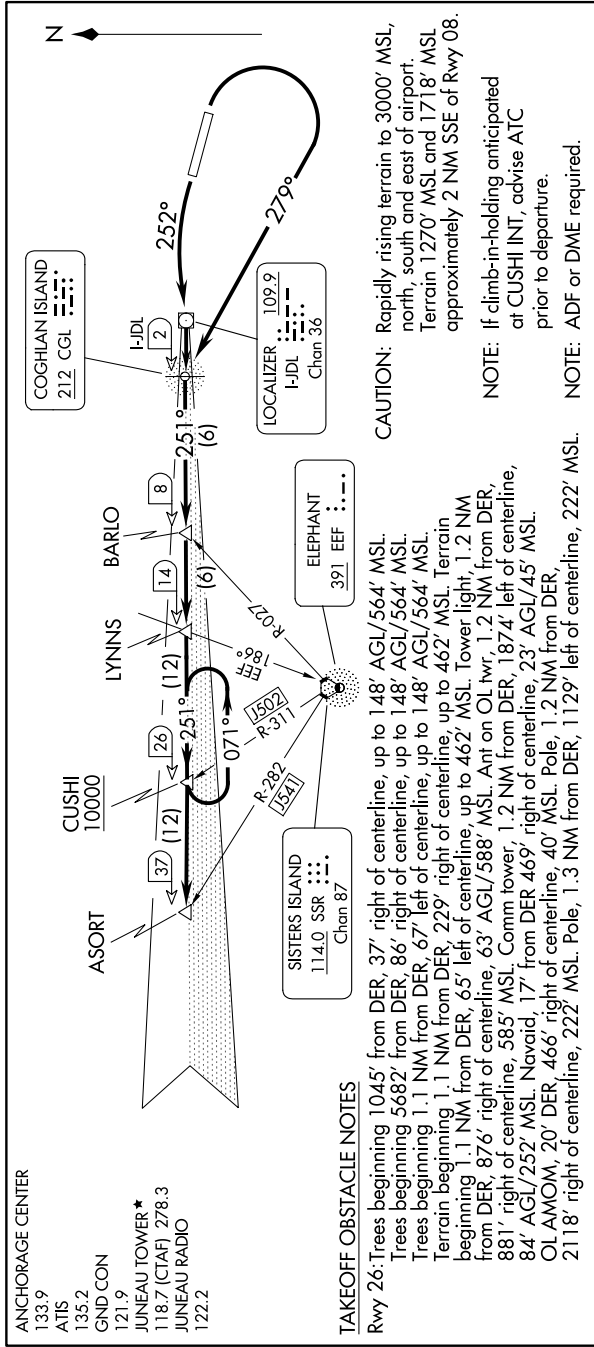


ASORT TWO DEPARTURE

AL-1191 (FAA)

JUNEAU INTL (JNU)(PAJN)
JUNEAU, ALASKA

AK, 26 DEC 2024 to 20 FEB 2025



TAKEOFF OBSTACLE NOTES

CAUTION: Rapidly rising terrain to 3000' MSL, north, south and east of airport. Terrain 1270' MSL and 1718' MSL approximately 2 NM SSE of Rwy 08.

NOTE: If climb-in-holding anticipated at CUSHI INT, advise ATC prior to departure.

NOTE: ADF or DME required.

DEPARTURE ROUTE DESCRIPTION

TAKEOFF RUNWAY 8: Climbing right turn as soon as practical. Climb in visual conditions direct CGL NDB or heading 279° to I-JDL West course/2 DME (visual conditions must be maintained from takeoff until established over CGL NDB or I-JDL West course/2 DME at or above 1000 MSL), thence

TAKEOFF RUNWAY 26: Climbing left turn heading 252° to CGL NDB or I-JDL West course/2 DME, thence

. . . . via I-JDL West course or 251° bearing from CGL NDB to cross CUSHI INT/I-JDL 26 DME at or above 10000, then on I-JDL West course or CGL NDB bearing 251° to ASORT INT/I-JDL 37 DME.

TAKEOFF MINIMUMS
Rwy 26: Standard with minimum climb of 595' per NM to 800, then 360' per NM to 10000, or 600-2 with minimum of 360' per NM to 10000.
Rwy 8: 1000-3 with minimum climb 350' per NM from 1000 to 10000.

NOTE: Chart not to scale.

AK, 26 DEC 2024 to 20 FEB 2025