

VORTAC SSR <b>114.0</b> Chan <b>87</b>	APP CRS <b>297°</b>	Rwy Idg TDZE Apt Elev	<b>6720</b> <b>33</b> <b>36</b>
--	------------------------	-----------------------------	---------------------------------------

# VOR RWY 29

GUSTAVUS (GST)(PAGS)

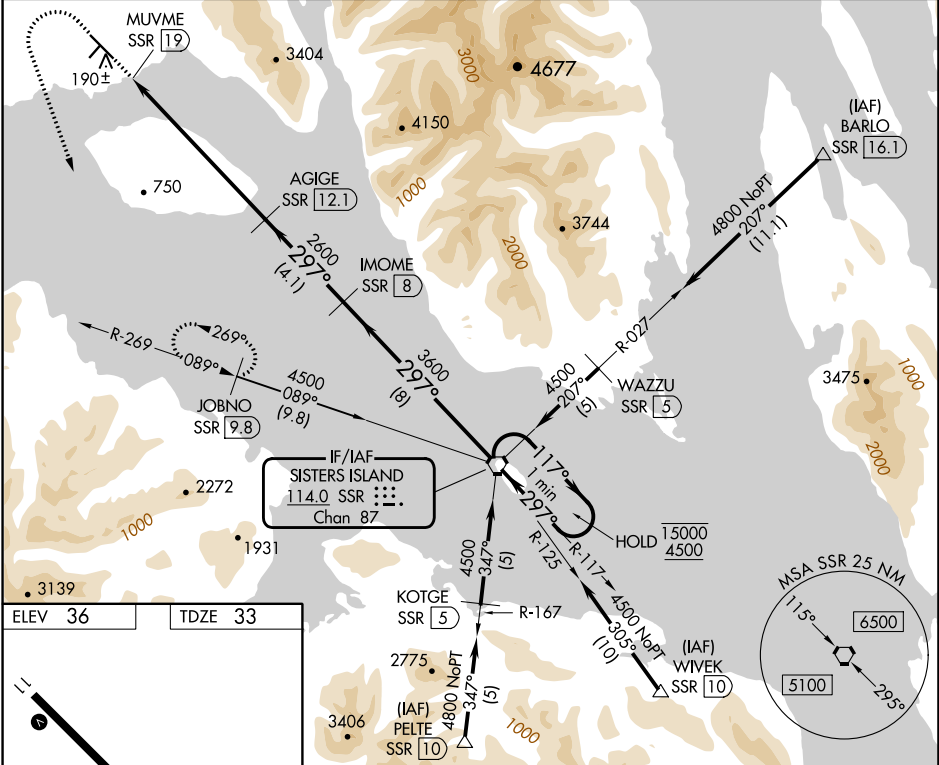
DME required.

**⚠** Circling NA northeast of Rwy 11-29. Rwy 29 helicopter visibility reduction below 1 SM NA. Straight-in Rwy 29 NA at night, Circling Rwy 2, 20, 29 NA at night. When local altimeter setting not received, use HNH/PAOH altimeter setting and increase all MDAs 60 feet.

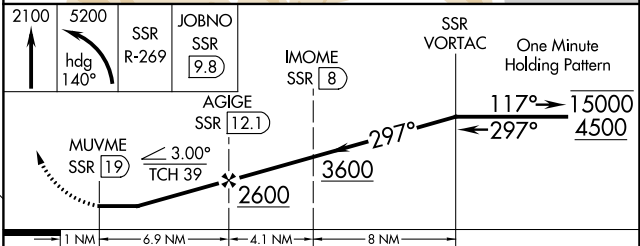
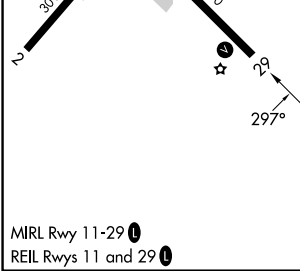
**⚠** -17°C

MISSED APPROACH: Climb to 2100 then climbing left turn to 5200 on heading 140° and SSR VORTAC R-269 to JOBNO/9.8 DME and hold, continue climb-in-hold to 5200.

AWOS-3P <b>125.9</b>	ANCHORAGE CENTER <b>133.2 360.65</b>	JUNEAU RADIO <b>122.65</b>	CTAF <b>122.50</b>
-------------------------	---	-------------------------------	-----------------------



ELEV 36	TDZE 33
---------	---------



CATEGORY	A	B	C	D
S-29	1300-1¼ 1267 (1300-1¼)	1300-1½ 1267 (1300-1½)	1300-3	1267 (1300-3)
<b>C</b> CIRCLING	1300-1¼ 1264 (1300-1¼)	1300-1½ 1264 (1300-1½)	1300-3	1264 (1300-3)

AK, 26 DEC 2024 to 20 FEB 2025

AK, 26 DEC 2024 to 20 FEB 2025