

# FAKES FOUR DEPARTURE

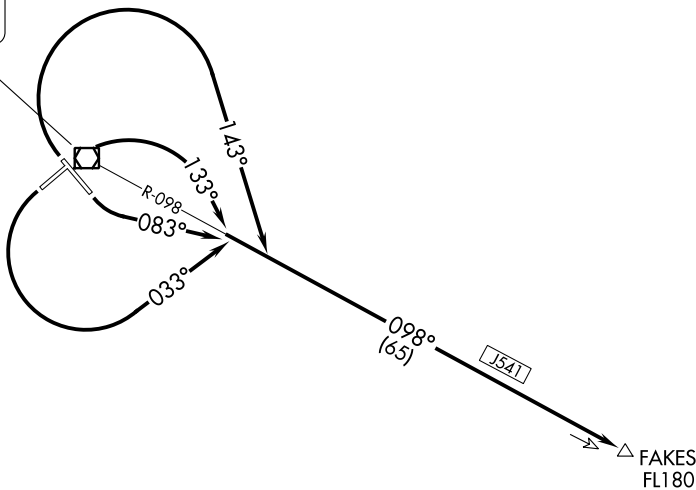
AL-1193 (FAA)

YAKUTAT (YAK)(PAYA)  
YAKUTAT, ALASKA

ANCHORAGE CENTER  
119.0 263.1  
JUNEAU RADIO  
123.6 (CTAF)

**TOP ALTITUDE:  
ASSIGNED BY ATC**

YAKUTAT  
113.3 YAK ---  
Chan 80



### TAKEOFF MINIMUMS

Rwys 2, 11, 20, 29: Standard with minimum climb  
of 280' per NM to FL180.

NOTE: Chart not to scale.



### DEPARTURE ROUTE DESCRIPTION

TAKEOFF RUNWAY 2: Climbing right turn on heading 133°, thence. . . .

TAKEOFF RUNWAY 11: Climbing left turn on heading 083°, thence. . . .

TAKEOFF RUNWAY 20: Climbing left turn on heading 033°, thence. . . .

TAKEOFF RUNWAY 29: Climbing right turn on heading 143°, thence. . . .

. . . intercept YAK VOR/DME R-098 to FAKES. Cross FAKES at or above  
FL180 for assigned route of flight.

# FAKES FOUR DEPARTURE