

WAAS CH 78414 W02A	APP CRS 025°	Rwy Idg TDZE Apt Elev	5087 32 40
--	------------------------	-----------------------------	---------------------------------------

RNAV (GPS) RWY 2

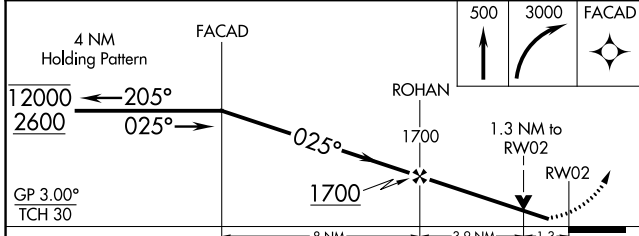
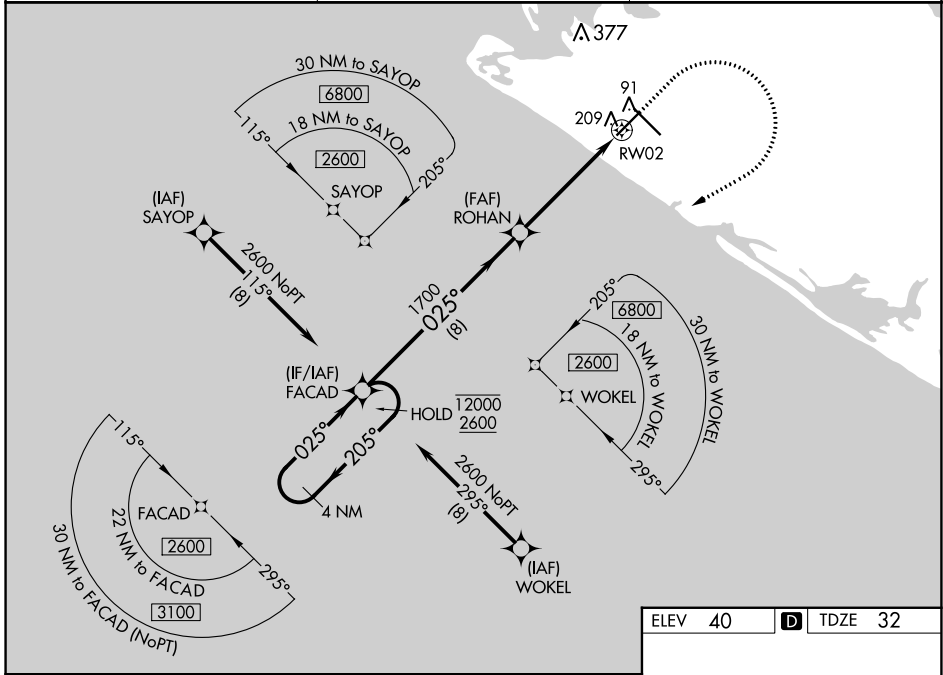
YAKUTAT (YAK) (PAYA)

RNP APCH - GPS.

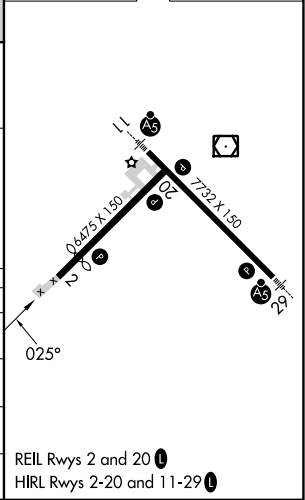
⚠ Circling Rwy 20 NA at night. Rwy 2 helicopter visibility reduction below 3/4 SM NA. When Yakutat altimeter setting not received, procedure NA. For uncompensated Baro-VNAV systems, LNAV/VNAV NA below -16° C or above 54° C.

MISSED APPROACH: Climb to 500 then climbing right turn to 3000 direct FACAD and hold.

ASOS 135.75	ANCHORAGE CENTER 119.0 263.1	JUNEAU RADIO 123.6 (CTAF) 0
-----------------------	--	---------------------------------------



ELEV 40	D TDZE 32
---------	------------------



CATEGORY	A	B	C	D
LPV DA	297-1		265 (300-1)	
LNAV/VNAV DA	479-1 3/8		447 (500-1 3/8)	
LNAV MDA	460-1 428 (500-1)		460-1 1/4 428 (500-1 1/4)	
C CIRCLING	520-1 480 (500-1)	540-1 500 (500-1)	820-2 1/4 780 (800-2 1/4)	820-2 1/2 780 (800-2 1/2)

REIL Rws 2 and 20 **0**
HIRL Rws 2-20 and 11-29 **0**

AK, 26 DEC 2024 to 20 FEB 2025

AK, 26 DEC 2024 to 20 FEB 2025