

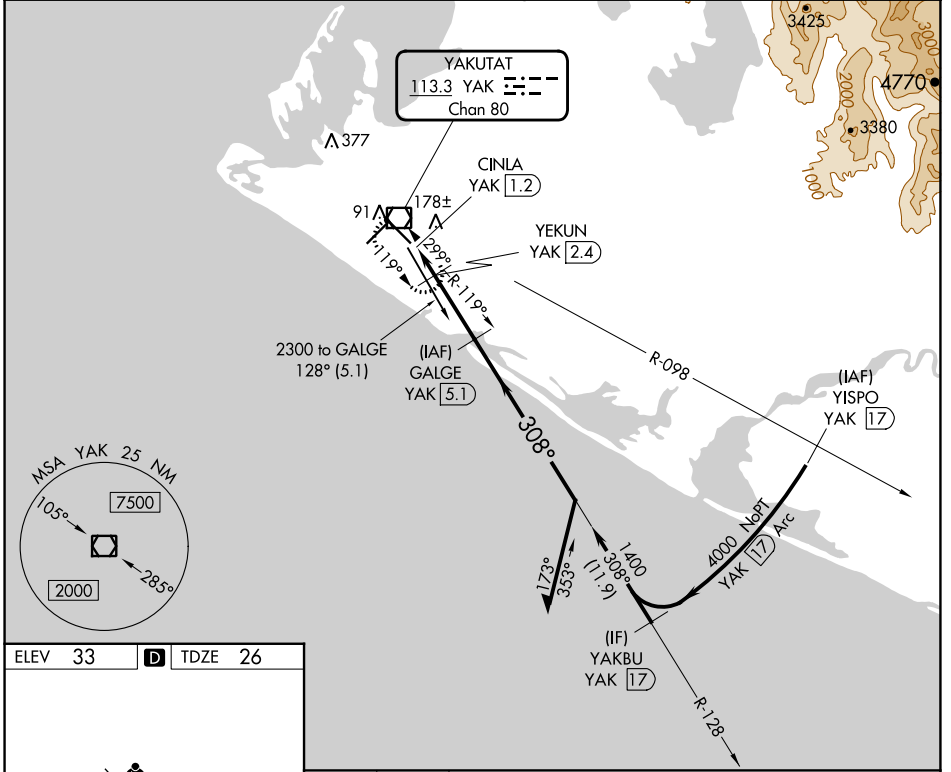
VOR/DME YAK 113.3 Chan 80	APP CRS 308°	Rwy Idg 7732 TDZE 26 Apt Elev 33
--	------------------------	---

VOR/DME RWY 29

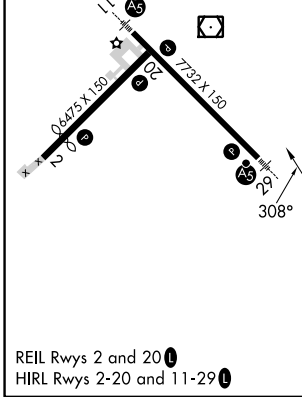
YAKUTAT (YAK) (PAYA)

<p>▼ Inop table does not apply to Cats A/B. ▲ For inop MALSR, increase Cats C/D visibility to 1½ mile.</p>	<p>MALSR </p>	<p>MISSED APPROACH: Climb to 2000 direct YAK VOR/DME and hold, continue climb-in-hold to 2000.</p>
--	-------------------	--

ASOS 135.75	ANCHORAGE CENTER 119.0 263.1	JUNEAU RADIO 123.6 (CTAF) 0
-----------------------	--	---------------------------------------



ELEV 33	D	TDZE 26
---------	----------	---------



2000	YAK	VGSI and descent angles not coincident (VGSI Angle 3.00/TCH 51).			
		Remain within 10 NM			
YAK VOR/DME		YAKUN YAK 2.4	GALGE YAK 5.1		
CINLA YAK 1.2		128°			
308°		1800			
540		1400			
0.3		1.2 NM		2.7 NM	
CATEGORY	A	B	C	D	
S-29	440-1 414 (500-1)				
C CIRCLING	500-1 467 (500-1)	520-1 487 (500-1)	620-1½ 587 (600-1½)	720-2¼ 687 (700-2¼)	

AK, 26 DEC 2024 to 20 FEB 2025

AK, 26 DEC 2024 to 20 FEB 2025